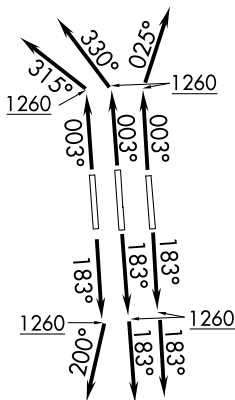


CHARLOTTE, NORTH CAROLINA

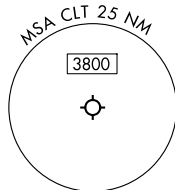
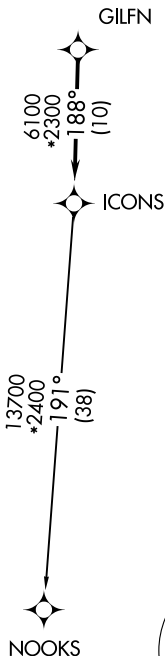
**TOP ALTITUDE:**  
8000

RNAV - 1 DME/DME/IRU or GPS.
RADAR required.



Rwys 18L/C/R, 36C/R: Standard with minimum climb of 500' per NM to 1260.  
Rwy 36L: Standard with minimum climb of 500' per NM to 1400.

- NOTE: For turbo jets only.
- NOTE: If unable to accept climb rates, advise ATC on initial contact.
- NOTE: Transponder code will be issued via PDC or Charlotte CLNC DEL.
- NOTE: Accelerate to 250K, if unable advise ATC. Upon reaching 10000 MSL, accelerate to and maintain 280K, if unable advise ATC.



NOTE: Chart not to scale.

CHARLOTTE, NORTH CAROLINA  
CHARLOTTE/DOUGLAS INTL (CLT)

(ICONS5.ICONS) 21MAR24



DEPARTURE ROUTE DESCRIPTION

SEE ADDITIONAL REQUIREMENTS ON AAUP

TAKEOFF RUNWAYS 18L/C: Climb on heading 183° to 1260, then on heading 183° or as assigned by ATC on RADAR vectors to GILFN, thence. . . .

TAKEOFF RUNWAY 18R: Climb on heading 183° to 1260, then on heading 200° or as assigned by ATC on RADAR vectors to GILFN, thence. . . .

TAKEOFF RUNWAY 36L: Climb on heading 003° to 1260, then on heading 315° or as assigned by ATC on RADAR vectors to GILFN, thence. . . .

TAKEOFF RUNWAY 36C: Climb on heading 003° to 1260, then on heading 330° or as assigned by ATC on RADAR vectors to GILFN, thence. . . .

TAKEOFF RUNWAY 36R: Climb on heading 003° to 1260, then on heading 025° or as assigned by ATC on RADAR vectors to GILFN, thence. . . .

. . . .on track 188° to ICONS, then on NOOKS transition. Maintain 8000.  
Expect clearance to filed altitude within 10 minutes after departure.

NOOKS TRANSITION (ICONS5.NOOKS)

SE-2, 25 DEC 2025 to 22 JAN 2026

SE-2, 25 DEC 2025 to 22 JAN 2026