

# MOLOKAI FIVE DEPARTURE

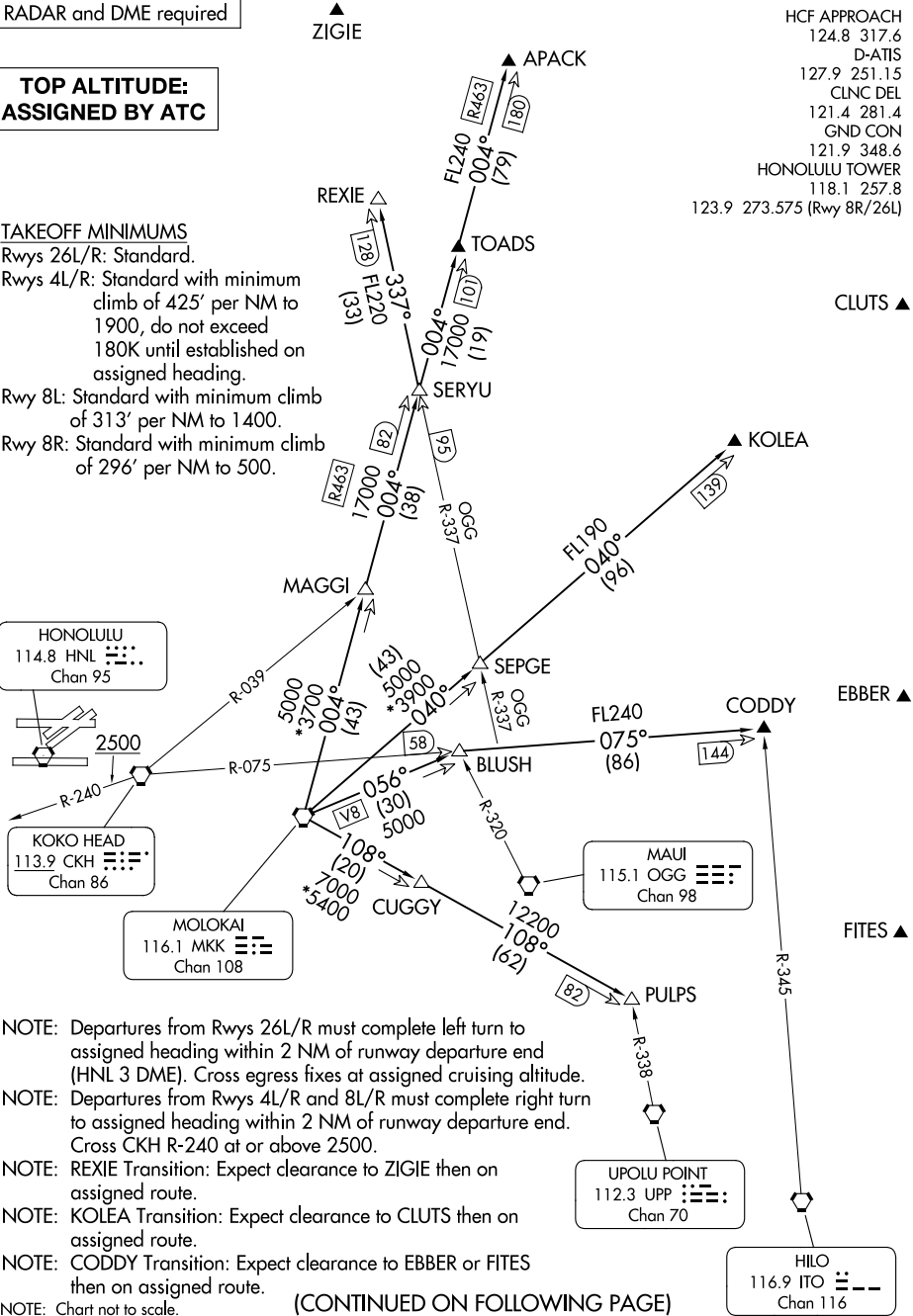
RADAR and DME required

**TOP ALTITUDE:  
ASSIGNED BY ATC**

### TAKEOFF MINIMUMS

Rwys 26L/R: Standard.  
 Rwys 4L/R: Standard with minimum climb of 425' per NM to 1900, do not exceed 180K until established on assigned heading.  
 Rwy 8L: Standard with minimum climb of 313' per NM to 1400.  
 Rwy 8R: Standard with minimum climb of 296' per NM to 500.

HCF APPROACH  
 124.8 317.6  
 D-ATIS  
 127.9 251.15  
 CLNC DEL  
 121.4 281.4  
 GND CON  
 121.9 348.6  
 HONOLULU TOWER  
 118.1 257.8  
 123.9 273.575 (Rwy 8R/26L)



- NOTE: Departures from Rwys 26L/R must complete left turn to assigned heading within 2 NM of runway departure end (HNL 3 DME). Cross egress fixes at assigned cruising altitude.
- NOTE: Departures from Rwys 4L/R and 8L/R must complete right turn to assigned heading within 2 NM of runway departure end. Cross CKH R-240 at or above 2500.
- NOTE: REXIE Transition: Expect clearance to ZIGIE then on assigned route.
- NOTE: KOLEA Transition: Expect clearance to CLUTS then on assigned route.
- NOTE: CODDY Transition: Expect clearance to EBBER or FITES then on assigned route.
- NOTE: Chart not to scale.

(CONTINUED ON FOLLOWING PAGE)

# MOLOKAI FIVE DEPARTURE

PAC, 27 NOV 2025 to 22 JAN 2026

PAC, 27 NOV 2025 to 22 JAN 2026



DEPARTURE ROUTE DESCRIPTION

Turn right/left to heading as assigned by Tower, expect vectors to MKK VORTAC, maintain 5000; then on transition. Expect clearance to enroute altitude/flight level at MKK VORTAC. Cross egress fixes REXIE, APACK, KOLEA, and CODDY at assigned cruising altitude, unless otherwise advised by ATC.

APACK TRANSITION (MKK5.APACK): From over MKK VORTAC on MKK R-004 to APACK.

CODDY TRANSITION (MKK5.CODDY): From over MKK VORTAC on MKK R-056 and CKH R-075 to CODDY.

KOLEA TRANSITION (MKK5.KOLEA): From over MKK VORTAC on MKK R-040 to KOLEA.

PULPS TRANSITION (MKK5.PULPS): From over MKK VORTAC on MKK R-108 to PULPS.

REXIE TRANSITION (MKK5.REXIE): From over MKK VORTAC on MKK R-004 and OGG R-337 to REXIE.

PAC, 27 NOV 2025 to 22 JAN 2026

PAC, 27 NOV 2025 to 22 JAN 2026