

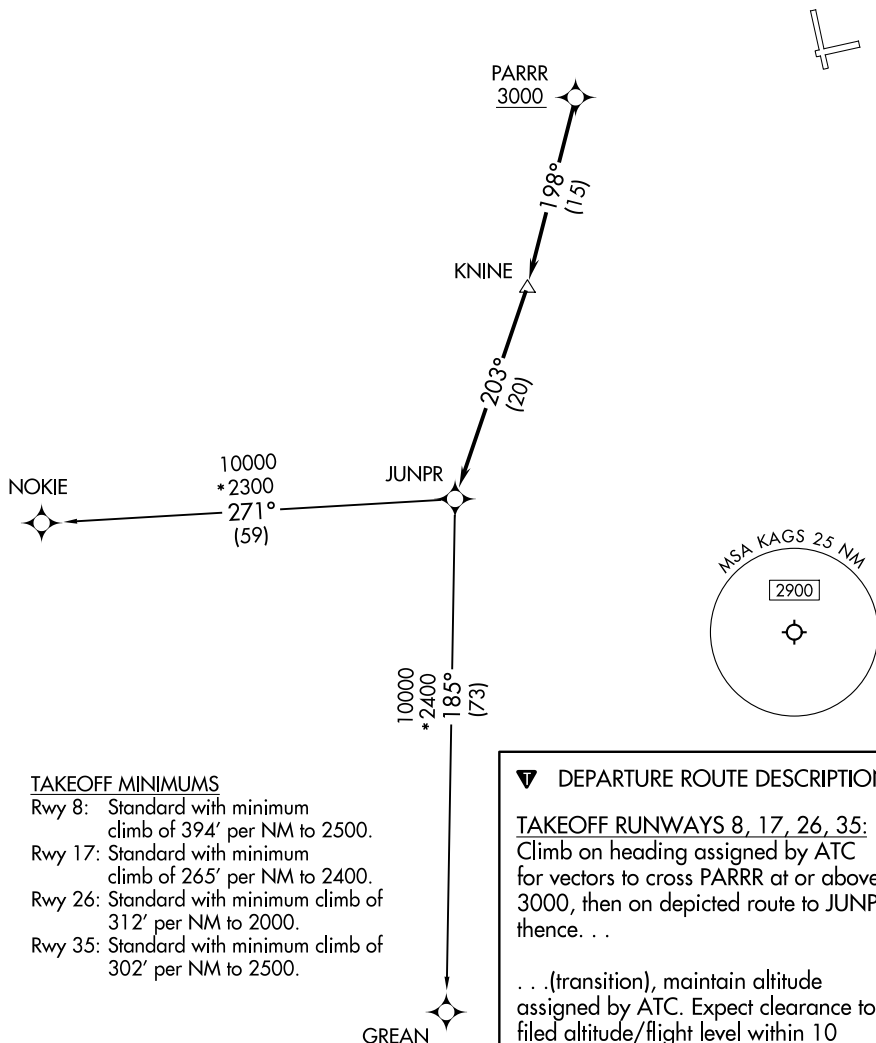
AUGUSTA DEP CON ★  
126.8 270.3  
CLNC DEL  
118.65  
AUGUSTA TOWER ★  
118.7 (CTAF) 239.3

**TOP ALTITUDE:  
ASSIGNED BY ATC**

RNAV 1 - DME/DME/IRU or GPS required.

RADAR required.

NOTE: Do not exceed 250K until advised by ATC.



## DEPARTURE ROUTE DESCRIPTION

TAKEOFF RUNWAYS 8, 17, 26, 35:  
Climb on heading assigned by ATC  
for vectors to cross PARRR at or above  
3000, then on depicted route to JUNPR,  
thence. . .

... (transition), maintain altitude assigned by ATC. Expect clearance to filed altitude/flight level within 10 minutes after departure.

GREEN TRANSITION (JUNPR6.GREEN)  
NOKIE TRANSITION (JUNPR6.NOKIE)

NOTE: Chart not to scale.