

VORTAC MKK 116.1 Chan 108	APP CRS 066°	Rwy Ldg TDZE Apt Elev 454	N/A N/A 454
---	------------------------	-------------------------------------	--------------------------

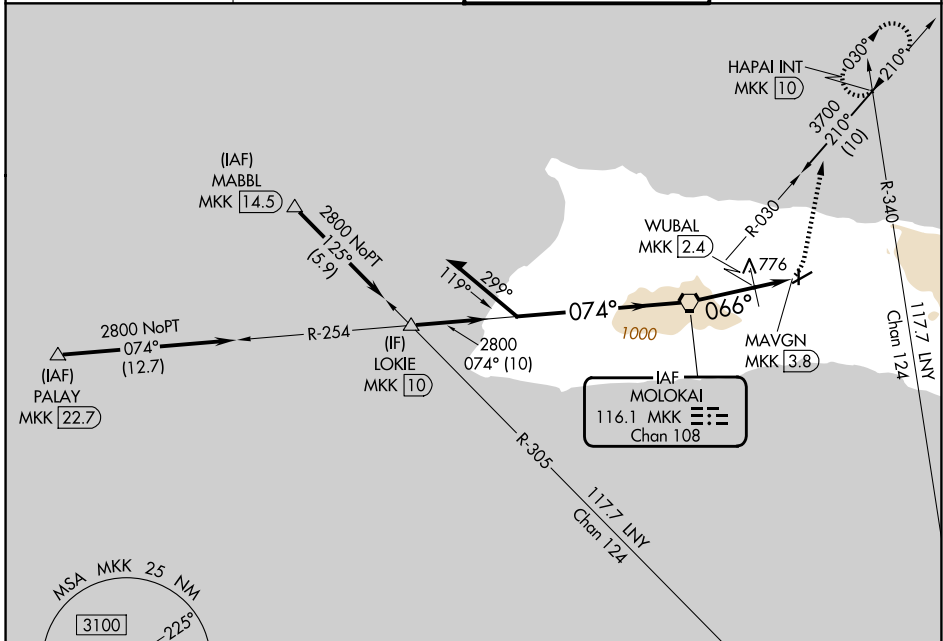
VOR or TACAN-A

MOLOKAI (MKK) (PHMK)

⚠ Circling Rwy 17, 23 NA at night.

MISSED APPROACH: Climbing left turn to 4000 on heading 360° and on MKK VORTAC R-030 to HAPAI INT/MKK 10 DME and hold, continue climb-in-hold to 4000.

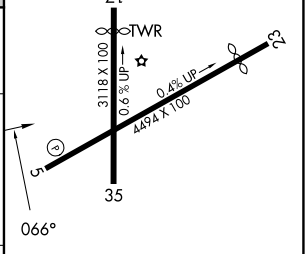
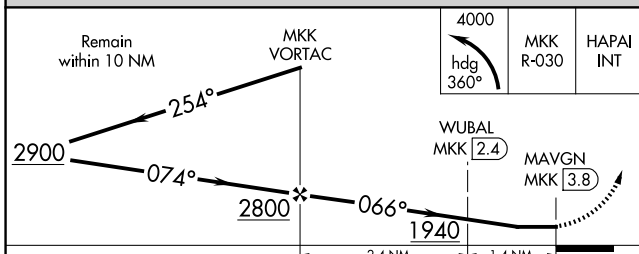
ATIS 128.2	HCF CENTER 124.1 317.5	MOLOKAI TOWER* 125.7 (CTAF) 0 306.2	GND CON 121.9
----------------------	----------------------------------	---	-------------------------



PAC, 22 JAN 2026 to 19 MAR 2026

PAC, 22 JAN 2026 to 19 MAR 2026

ELEV 454	D
----------	----------



CATEGORY	A	B	C	D
CIRCLING	1940-1 1/4 1486 (1500-1 1/4)	1940-1 1/2 1486 (1500-1 1/2)	1940-3	1486 (1500-3)
WUBAL FIX MINIMUMS (DME REQUIRED)				
CIRCLING	1400-1 1/4 946 (1000-1 1/4)		1680-3 1226 (1300-3)	1940-3 1486 (1500-3)

REIL Rwy 5 0	MIRL Rws 5-23 and 17-35 0				
FAF to MAP 3.8 NM					
Knots	60	90	120	150	180
Min:Sec	3:48	2:32	1:54	1:31	1:16