

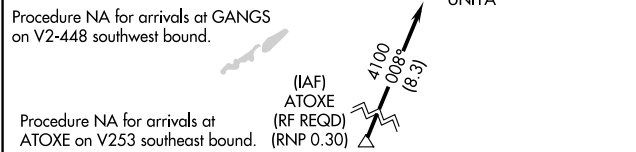
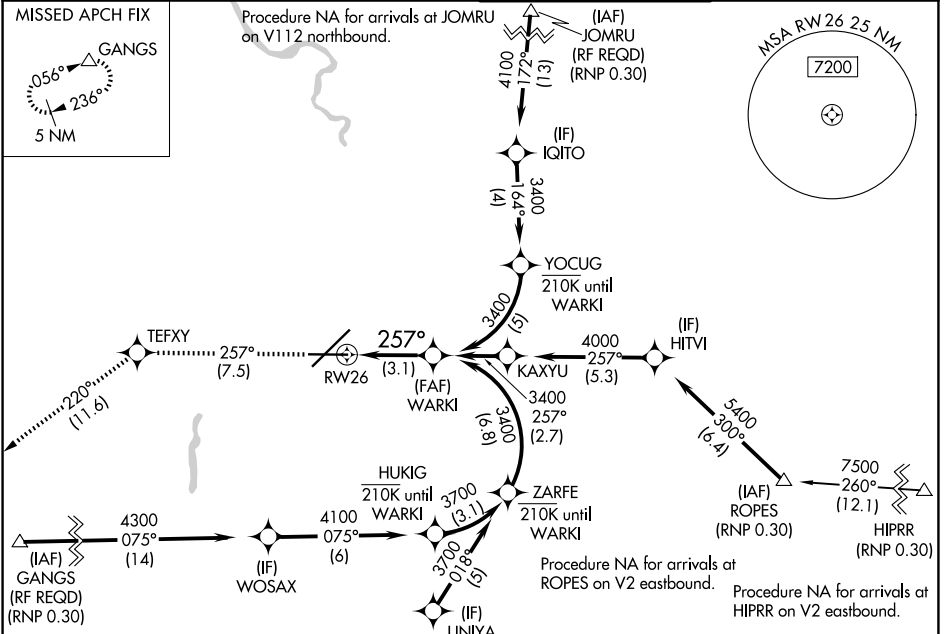
APP CRS	Rwy Ldg	<b>8199</b>
<b>257°</b>	TDZE	<b>2372</b>
	Apt Elev	<b>2385</b>

# RNAV (RNP) Z RWY 26

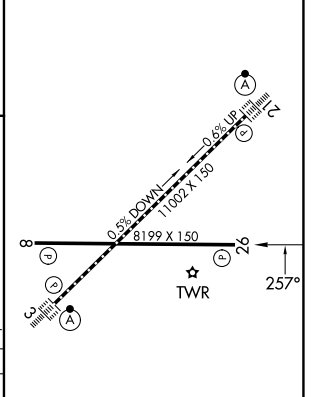
SPOKANE INTL (GEG)

RNP AR APCH.	MISSED APPROACH: Climb to 5000 on track 257° to TEFXY and on track 220° to GANGS and hold.
▼ For uncompensated Baro-VNAV systems, procedure NA below -17°C or above 54°C.	

ATIS <b>124.325 254.375</b>	SPOKANE APP CON <b>123.75 282.25</b> (205°-025°) <b>133.35 263.0</b> (026°-204°)	SPOKANE TOWER <b>118.3 278.3</b>	GND CON <b>121.9 348.6</b>
--------------------------------	--	-------------------------------------	-------------------------------



ELEV 2385	D	TDZE 2372
-----------	---	-----------



5000	TEFXY	tr 220°	GANGS	WARKI
tr 257°				3400
-3.1 NM				

CATEGORY	A	B	C	D
RNP 0.11 DA		2745-1¼	373 (400-1¼)	
RNP 0.30 DA		2795-1¾	423 (500-1¾)	

## AUTHORIZATION REQUIRED

NW-1, 19 MAR 2026 to 16 APR 2026

NW-1, 19 MAR 2026 to 16 APR 2026