

(ADYMS.ADYMS3) 25275

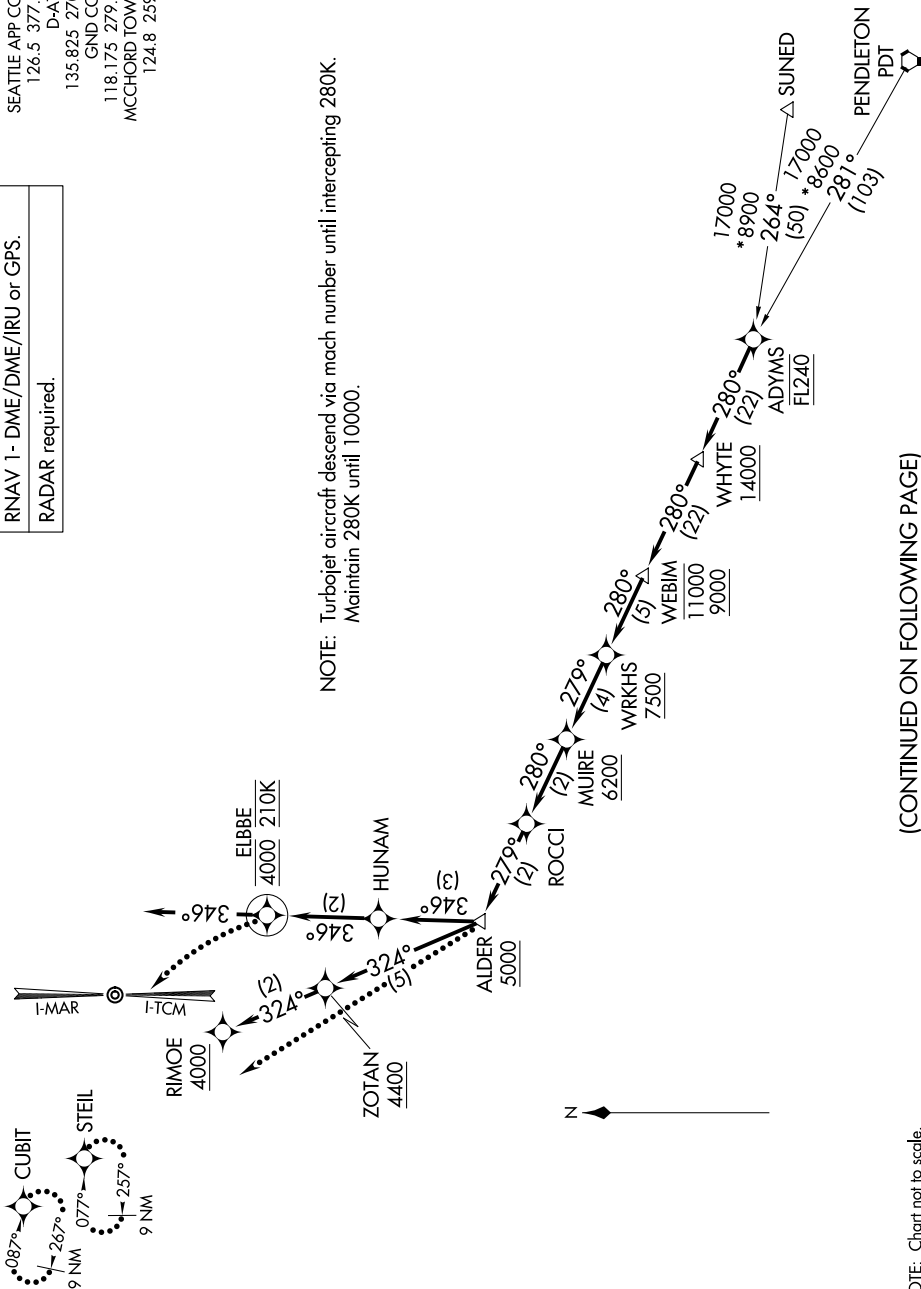
ADYMS THREE ARRIVAL (RNAV)

MCCHORD FLD (JOINT BASE LEWIS-MCCHORD) (KTCM)
AL-414 (FAA) TACOMA, WASHINGTON

SEATTLE APP CON
126.5 377.15
D-ATIS
135.825 270.1
GND CON
118.175 279.65
MCCHORD TOWER
124.8 259.3

RNAV 1 - DME/DME/IRU or GPS.
RADAR required.

NOTE: Turbojet aircraft descend via mach number until intercepting 280K.
Maintain 280K until 10000.



(CONTINUED ON FOLLOWING PAGE)

NOTE: Chart not to scale.

NW-1, 19 MAR 2026 to 16 APR 2026

NW-1, 19 MAR 2026 to 16 APR 2026

ADYMS THREE ARRIVAL (RNAV)

(ADYMS.ADYMS3) 27JAN22

TACOMA, WASHINGTON
MCCHORD FLD (JOINT BASE LEWIS-MCCHORD) (KTCM)

ARRIVAL ROUTE DESCRIPTION

PENDLETON TRANSITION (PDT.ADYMS3)

SUNED TRANSITION (SUNED.ADYMS3)

From ADYMS on track 280° to cross WHYTE at or above 14000, then on track 280° to cross WEBIM between 9000 and 11000, then on track 280° to cross WRKHS at or above 7500.

LANDING RUNWAY 16: From WRKHS on track 279° to cross MUIRE at or above 6200, then on track 280° to ROCCI, then on track 279° to cross ALDER at or above 5000, then on track 346° to HUNAM, then on track 346° to cross ELBBE at 4000 and at 210K, then on track 346°. Expect RADAR vectors to final approach course or visual approach.

LANDING RUNWAY 34: From WRKHS on track 279° to cross MUIRE at or above 6200, then on track 280° to ROCCI, then on track 279° to cross ALDER at or above 5000, then on track 324° to cross ZOTAN at or above 4400, then on track 324° to cross RIMOE at/above 4000. Expect ILS or visual approach.

LOST COMMUNICATIONS

RUNWAY 34: At ALDER, execute approach, if unable, proceed direct CUBIT and hold as published, maintain 4000, squawk appropriate beacon code.

RUNWAY 16: At ELBEE, turn left direct STEIL and execute approach, if unable hold as published, maintain 4000, squawk appropriate beacon code.

NW-1, 19 MAR 2026 to 16 APR 2026

NW-1, 19 MAR 2026 to 16 APR 2026