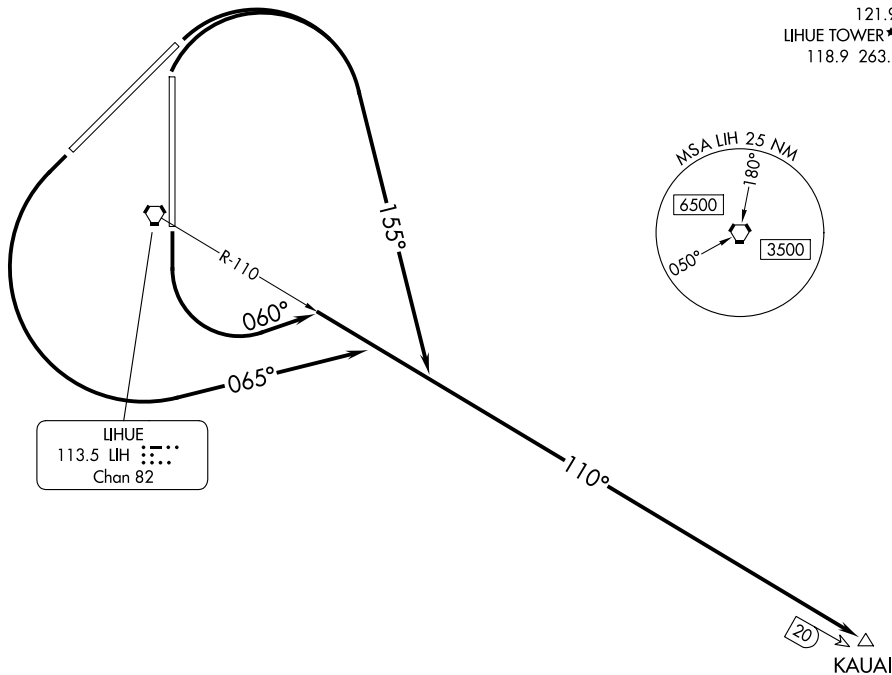


DME required.

HCF CENTER
 126.5 269.4
 ATIS
 127.2
 GND CON
 121.9
 LIHUE TOWER*
 118.9 263.1



LIHUE
 113.5 LIH : : : :
 Chan 82

TAKEOFF MINIMUMS

Rwys 3, 17, 35: Standard

Rwy 21: Standard with minimum climb of 720'/NM to 2100 or 4900-3 for VCOA.

NOTE: Rwy 21: Obtain ATC approval for VCOA when requesting IFR clearance. Climb in visual conditions to cross Lihue Airport at or above 4900 before proceeding on course.

NOTE: Chart not to scale.

(CONTINUED ON FOLLOWING PAGE)

DEPARTURE ROUTE DESCRIPTION

TAKEOFF RUNWAY 3: Climbing right turn to heading 155° thence. . . .

TAKEOFF RUNWAY 17: Climbing left turn to heading 060° thence. . . .

TAKEOFF RUNWAY 21: Climbing left turn to heading 065° thence. . . .

TAKEOFF RUNWAY 35: Climbing right turn to heading 155° thence. . . .

. . . . intercept LIH VORTAC R-110 eastbound to KAUAI/LIH 20 DME before proceeding on course.

TAKEOFF OBSTACLE NOTES

Rwy 3: Electrical system 24' from DER, 237' right of centerline, 17' AGL/81' MSL.
 Navaid 85' from DER, 418' left of centerline, 8' AGL/85' MSL.
 Tree 114' from DER, 337' right of centerline, 29' AGL/83' MSL.
 Trees beginning 221' from DER, 188' right of centerline, up to 35' AGL/88' MSL.
 Trees beginning 240' from DER, 19' right of centerline, up to 43' AGL/95' MSL.
 Trees beginning 250' from DER, 8' left of centerline, up to 34' AGL/93' MSL.
 Trees beginning 395' from DER, 38' left of centerline, up to 33' AGL/94' MSL.
 Trees beginning 415' from DER, 39' left of centerline, up to 39' AGL/95' MSL.
 Trees beginning 431' from DER, 38' left of centerline, up to 34' AGL/103' MSL.
 Trees beginning 473' from DER, 15' left of centerline, up to 50' AGL/107' MSL.
 Tree 541' from DER, 4' right of centerline, 54' AGL/103' MSL.
 Trees beginning 548' from DER, 8' right of centerline, up to 56' AGL/104' MSL.
 Tree 971' from DER, 676' left of centerline, 68' AGL/115' MSL.
 Tree 1563' from DER, 539' left of centerline, 90' AGL/127' MSL.
 Tree 1750' from DER, 783' left of centerline, 120' AGL/165' MSL.

Rwy 17: Light poles 4' from DER, 6' left of centerline, 2' AGL/94' MSL.
 Tree 135' from DER, 273' right of centerline, 10' AGL/95' MSL.
 Trees beginning 858' from DER, 565' right of centerline, up to 45' AGL/131' MSL.
 Tree 1289' from DER, 734' right of centerline, 57' AGL/132' MSL.

Rwy 21: Light poles 8' from DER, 54' left of centerline, 3' AGL/154' MSL.
 Light poles 9' from DER, 55' right of centerline, 3' AGL/155' MSL.
 Terrain 33' from DER, 457' right of centerline, 156' MSL.
 Pole 191' from DER, 546' left of centerline, 44' AGL/183' MSL.
 Pole 366' from DER, 550' left of centerline, 46' AGL/184' MSL.
 Tree, pole beginning 496' from DER, 563' left of centerline, up to 70' AGL/206' MSL.
 Trees beginning 1148' from DER, 231' right of centerline, up to 42' AGL/203' MSL.
 Tree 1456' from DER, 185' right of centerline, 67' AGL/212' MSL.
 Trees beginning 1465' from DER, 53' right of centerline, up to 77' AGL/230' MSL.
 Trees beginning 1509' from DER, 62' right of centerline, up to 87' AGL/241' MSL.
 Tree 1535' from DER, 3' left of centerline, 70' AGL/208' MSL.
 Tree, pole beginning 1660' from DER, 9' right of centerline, up to 96' AGL/248' MSL.
 Trees beginning 1903' from DER, 267' left of centerline, up to 68' AGL/217' MSL.
 Tree 2016' from DER, 280' left of centerline, 70' AGL/218' MSL.
 Trees beginning 2028' from DER, 296' left of centerline, up to 73' AGL/221' MSL.
 Trees beginning 2211' from DER, 337' left of centerline, up to 82' AGL/227' MSL.
 Trees beginning 3101' from DER, 442' left of centerline, up to 107' AGL/231' MSL.
 Trees beginning 2.1 NM from DER, 2127' left of centerline, up to 3' AGL/896' MSL.
 Trees beginning 2.2 NM from DER, 2974' left of centerline, up to 212' AGL/1329' MSL.
 Trees beginning 2.3 NM from DER, 2596' left of centerline, up to 60' AGL/1402' MSL.

Rwy 35: Fence 40' from DER, 309' right of centerline, 13' AGL/94' MSL.
 Tree 107' from DER, 436' right of centerline, 19' AGL/100' MSL.
 Trees beginning 203' from DER, 379' right of centerline, up to 51' AGL/131' MSL.
 Terrain 2.3 NM from DER, 4221' left of centerline, 60' AGL/480' MSL.

PAC. 19 MAR 2026 to 14 MAY 2026

PAC. 19 MAR 2026 to 14 MAY 2026