


LOC/DME I-KOA 109.7 Chan 34	APP CRS 174°	Rwy Ldg 11000 TDZE 51 Apt Elev 51
---	------------------------	--

ILS or LOC RWY 17

ELLISON ONIZUKA KONA INTL AT KEAHOLE (KOA)(PHKO)

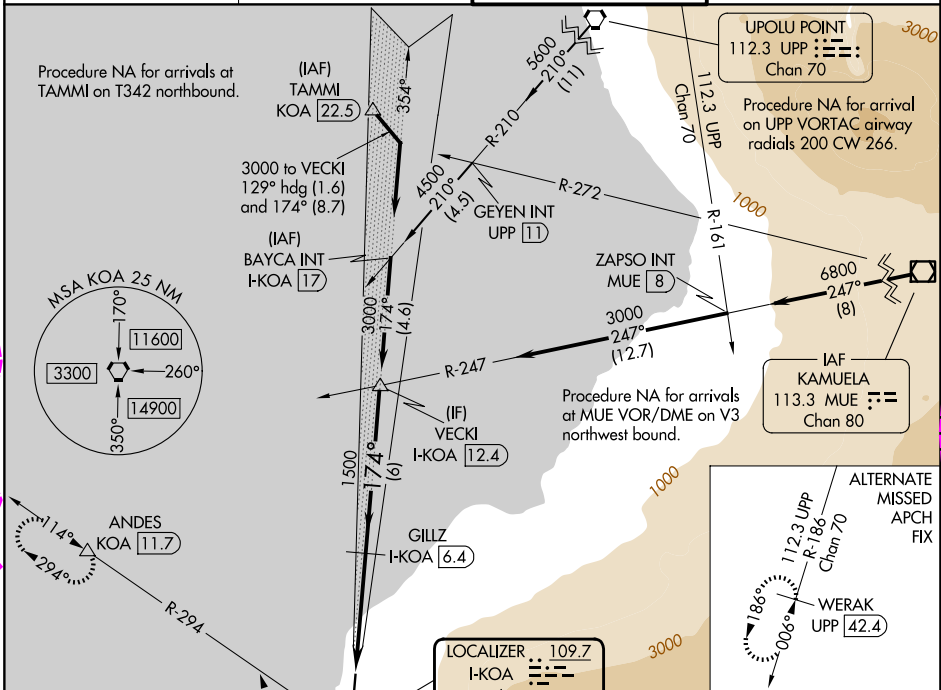
DME required.

⚠ Autopilot coupled approach NA below 500. Circling NA east of Rwy 17-35. For inop ALS, increase S-ILS 17 Cat E visibility to 3/4 SM and S-LOC 17 Cats C/D/E visibility to 1/2 SM.

MALSR 

MISSED APPROACH: Climb to 500 then climbing right turn to 5000 on KOA VORTAC R-294 to ANDES/KOA VORTAC 11.7 DME and hold, continue climb-in-hold to 5000.

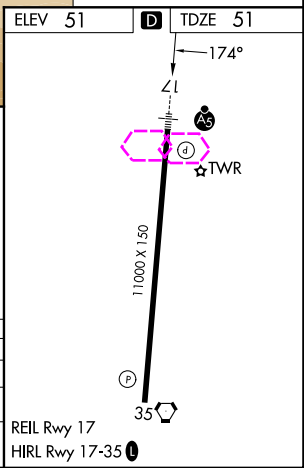
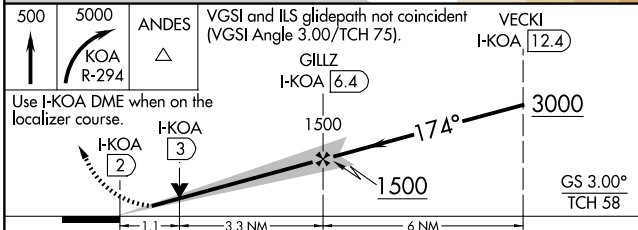
ATIS 127.4	HCF CENTER 118.45 278.3	KONA TOWER★ 120.3 (CTAF) 254.3	GND CON 121.9
----------------------	-----------------------------------	--	-------------------------



PAC. 19 MAR 2026 to 14 MAY 2026

PAC. 19 MAR 2026 to 14 MAY 2026

ELEV 51	D	TDZE 51
---------	----------	---------



CATEGORY	A	B	C	D	E
S-ILS 17			251-1/2	200 (200-1/2)	
S-LOC 17	460-1/2	409 (500-1/2)		460-3/4	409 (500-3/4)
CIRCLING	520-1	469 (500-1)	520-1 1/2	469 (500-1 1/2)	620-2 569 (600-2)