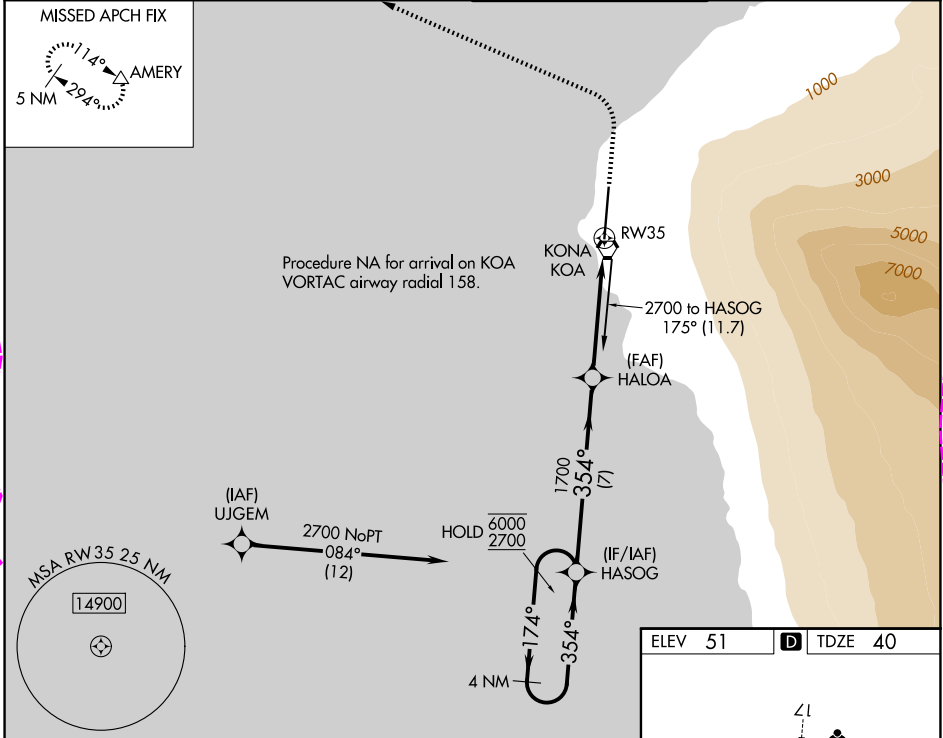


APP CRS	Rwy Ldg 11000
354°	TDZE 40
	Apt Elev 51

RNAV (GPS) RWY 35

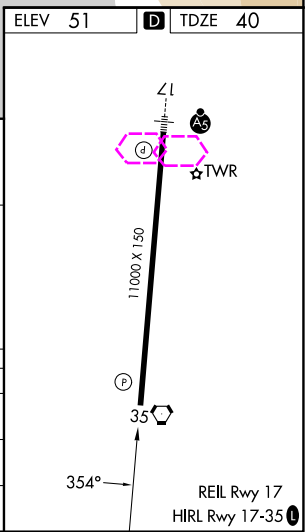
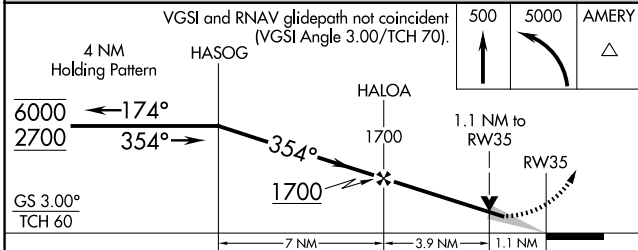
ELLISON ONIZUKA KONA INTL AT KEAHOLE (KOA) (PHKO)

RNP APCH - GPS.		MISSED APPROACH: Climb to 500 then climbing left turn to 5000 direct AMERY and hold.	
<p>⚠ Circling NA east of Rwy 17-35. WAAS VNAV NA. ⚠ For uncompensated Baro-VNAV systems, LNAV/VNAV NA below -5°C or above 54°C.</p>			
ATIS 127.4	HCF CENTER 118.45 278.3	KONA TOWER★ 120.3 (CTAF) 0 254.3	GND CON 121.9



PAC: 22 JAN 2026 to 19 MAR 2026

PAC: 22 JAN 2026 to 19 MAR 2026



CATEGORY	A	B	C	D	E
LNAV/VNAV DA	367-1 327 (400-1)				
LNAV MDA	460-1	420 (500-1)	460-1½	420 (500-1½)	
CIRCLING	520-1	469 (500-1)	520-1½ 469 (500-1½)	620-2	569 (600-2)

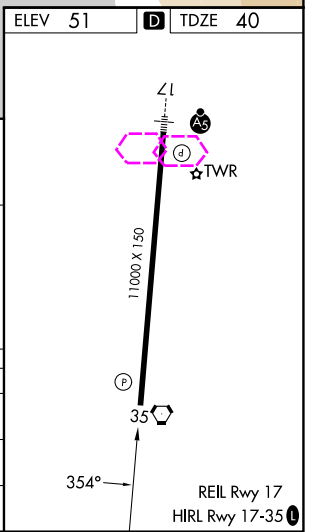
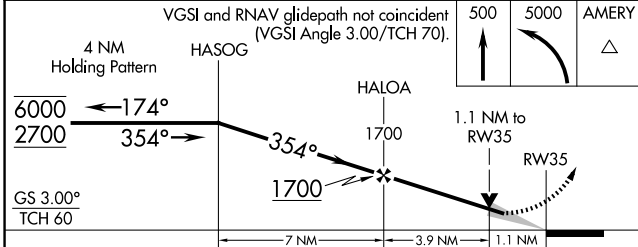
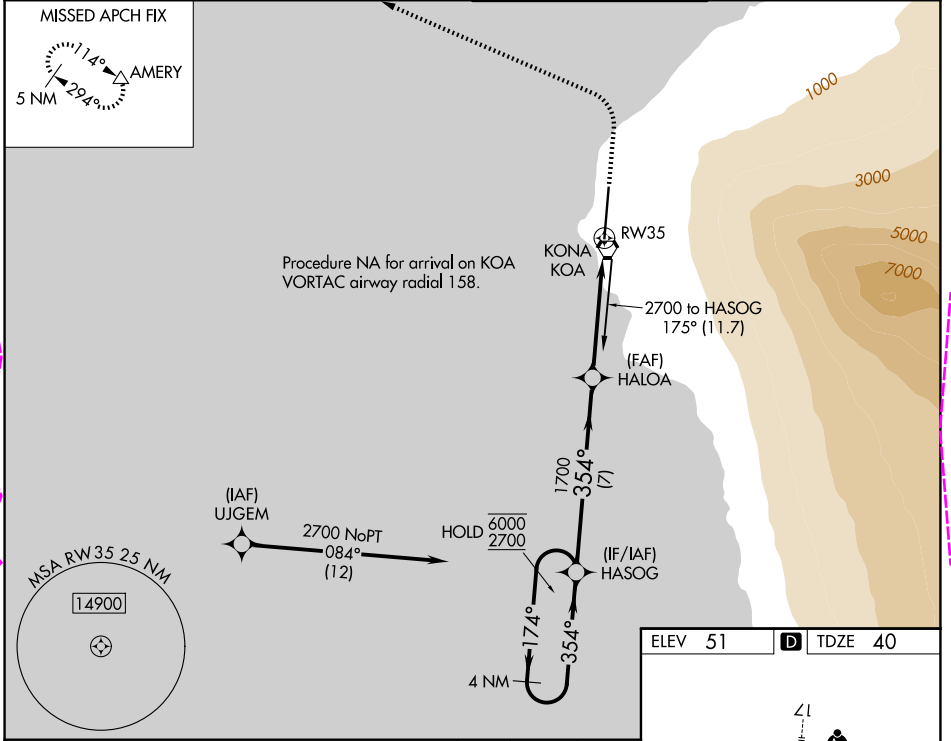
RNAV (GPS) RWY 35

APP CRS	Rwy Ldg 11000
354°	TDZE 40
	Apt Elev 51

RNAV (GPS) RWY 35

ELLISON ONIZUKA KONA INTL AT KEAHOLE (KOA) (PHKO)

RNP APCH - GPS.		MISSED APPROACH: Climb to 500 then climbing left turn to 5000 direct AMERY and hold.	
<p>⚠ Circling NA east of Rwy 17-35. WAAS VNAV NA. ⚠ For uncompensated Baro-VNAV systems, LNAV/VNAV NA below -5°C or above 54°C.</p>			
ATIS 127.4	HCF CENTER 118.45 278.3	KONA TOWER★ 120.3 (CTAF) 0 254.3	GND CON 121.9



CATEGORY	A	B	C	D	E
LNAV/VNAV DA	367-1 327 (400-1)				
LNAV MDA	460-1	420 (500-1)	460-1½	420 (500-1½)	
CIRCLING	520-1	469 (500-1)	520-1½ 469 (500-1½)	620-2	569 (600-2)

PAC: 19 MAR 2026 to 14 MAY 2026

PAC: 19 MAR 2026 to 14 MAY 2026