

KAILUA-KONA, HAWAII

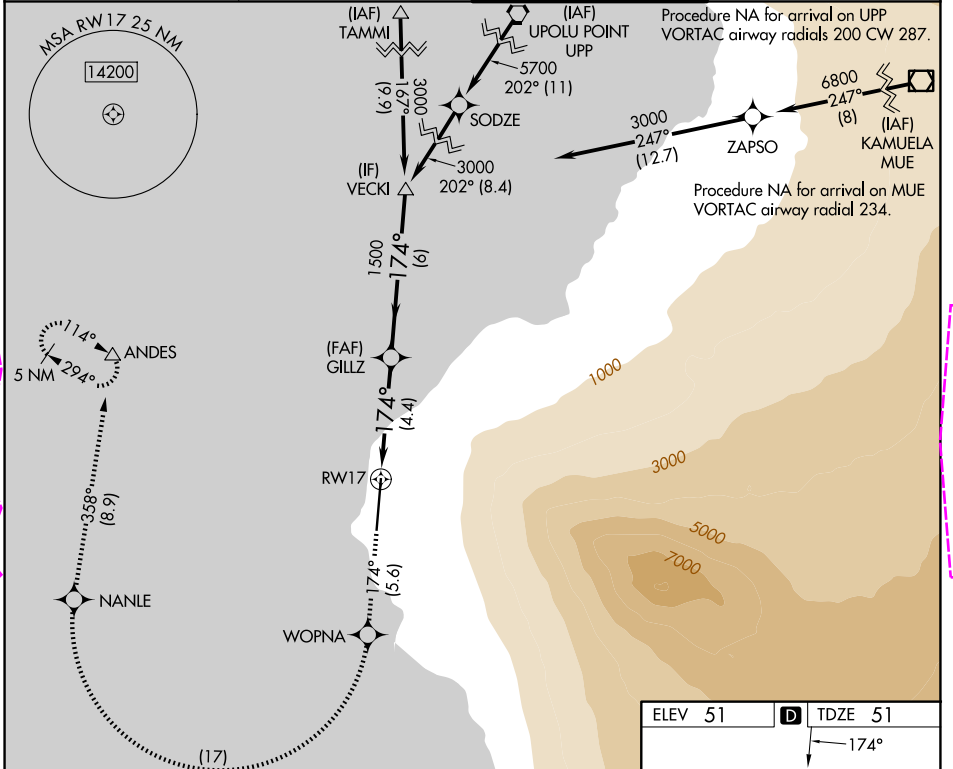
APP CRS	Rwy Ldg	11000
174°	TDZE	51
	Apt Elev	51

RNAV (RNP) Z RWY 17

ELLISON ONIZUKA KONA INTL AT KEAHOLE (KOA) (PHKO)

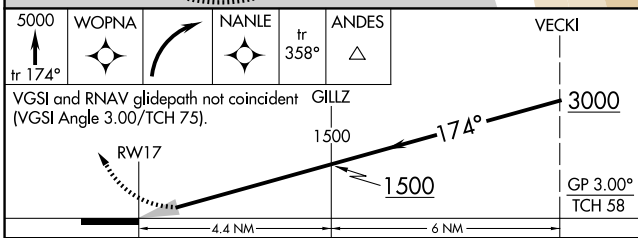
RNP AR APCH - GPS, RF. Authorization required.	MALSR	MISSED APPROACH: Climb to 5000 on track 174° to WOPNA and right turn to NANLE, and on track 358° to ANDES and hold.
▼ For uncompensated Baro-VNAV systems, procedure NA below -5°C or above 54°C. For inop ALS, increase RNP 0.10 all Cats visibility to ¾ SM, and RNP 0.24 all Cats visibility to ⅔ SM.		

ATIS 127.4	HCF CENTER 118.45 278.3	KONA TOWER★ 120.3 (CTAF) 0 254.3	GND CON 121.9
----------------------	-----------------------------------	--	-------------------------

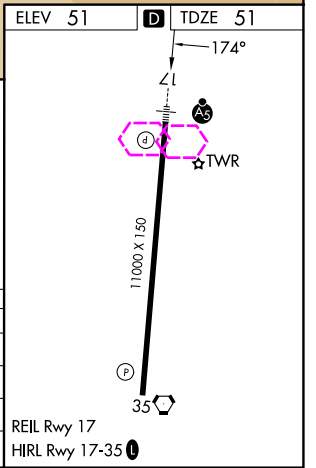


PAC, 22 JAN 2026 to 19 MAR 2026

PAC, 22 JAN 2026 to 19 MAR 2026



CATEGORY	A	B	C	D
RNP 0.10 DA		301-½	250 (300-½)	
RNP 0.24 DA		351-½	300 (300-½)	
RNP 0.30 DA		450-⅝	399 (400-⅝)	



AUTHORIZATION REQUIRED

KAILUA-KONA, HAWAII
Amdt 1 27NOV25

ELLISON ONIZUKA KONA INTL AT KEAHOLE (KOA) (PHKO)
19°44'N-156°03'W

RNAV (RNP) Z RWY 17

KAILUA-KONA, HAWAII

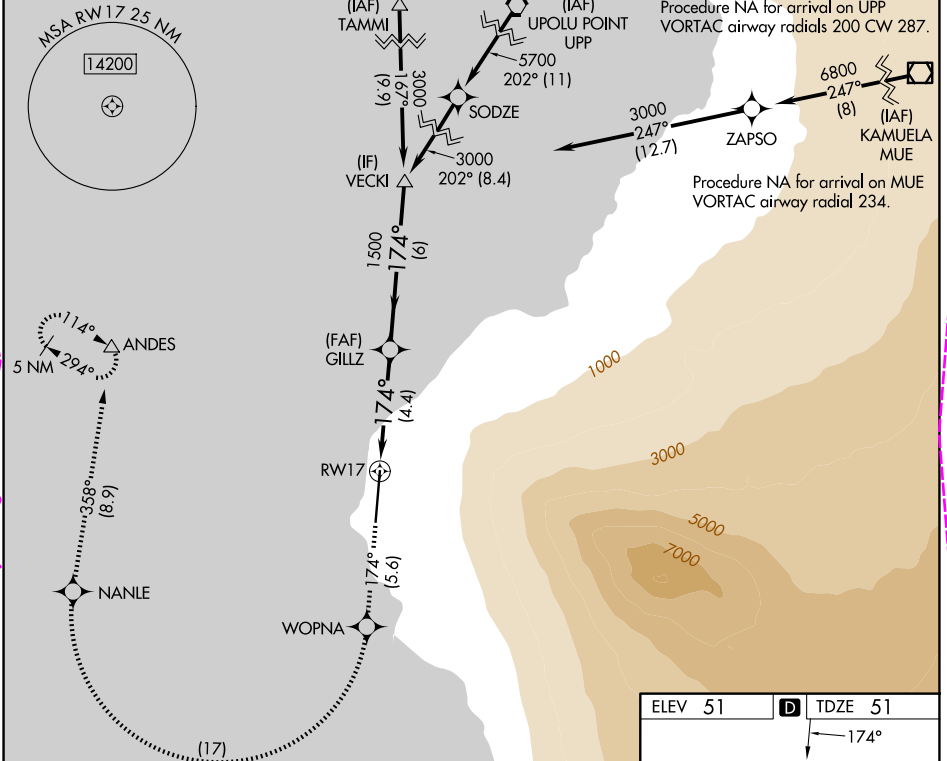
APP CRS	Rwy Ldg	11000
174°	TDZE	51
	Apt Elev	51

RNAV (RNP) Z RWY 17

ELLISON ONIZUKA KONA INTL AT KEAHOLE (KOA) (PHKO)

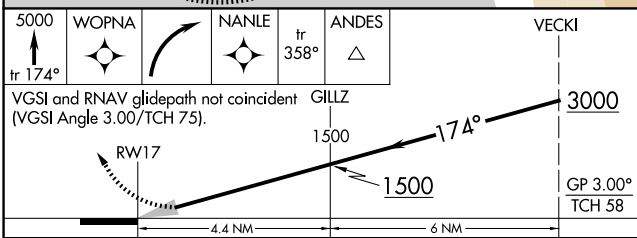
RNP AR APCH - GPS, RF. Authorization required.	MALSR	MISSED APPROACH: Climb to 5000 on track 174° to WOPNA and right turn to NANLE, and on track 358° to ANDES and hold.
▼ For uncompensated Baro-VNAV systems, procedure NA below -5°C or above 54°C. For inop ALS, increase RNP 0.10 all Cats visibility to ¾ SM, and RNP 0.24 all Cats visibility to ⅞ SM.		

ATIS 127.4	HCF CENTER 118.45 278.3	KONA TOWER★ 120.3 (CTAF) 0 254.3	GND CON 121.9
----------------------	-----------------------------------	--	-------------------------

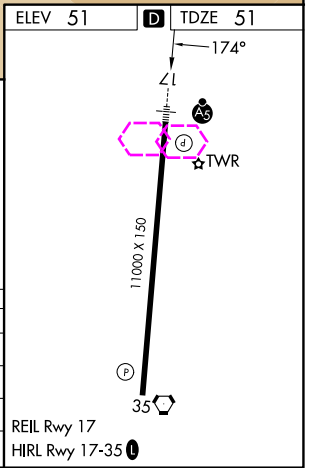


PAC, 19 MAR 2026 to 14 MAY 2026

PAC, 19 MAR 2026 to 14 MAY 2026



CATEGORY	A	B	C	D
RNP 0.10 DA		301-½	250 (300-½)	
RNP 0.24 DA		351-½	300 (300-½)	
RNP 0.30 DA		450-⅝	399 (400-⅝)	



AUTHORIZATION REQUIRED

KAILUA-KONA, HAWAII
Amdt 1 27NOV25

ELLISON ONIZUKA KONA INTL AT KEAHOLE (KOA) (PHKO)
19°44'N-156°03'W

RNAV (RNP) Z RWY 17