

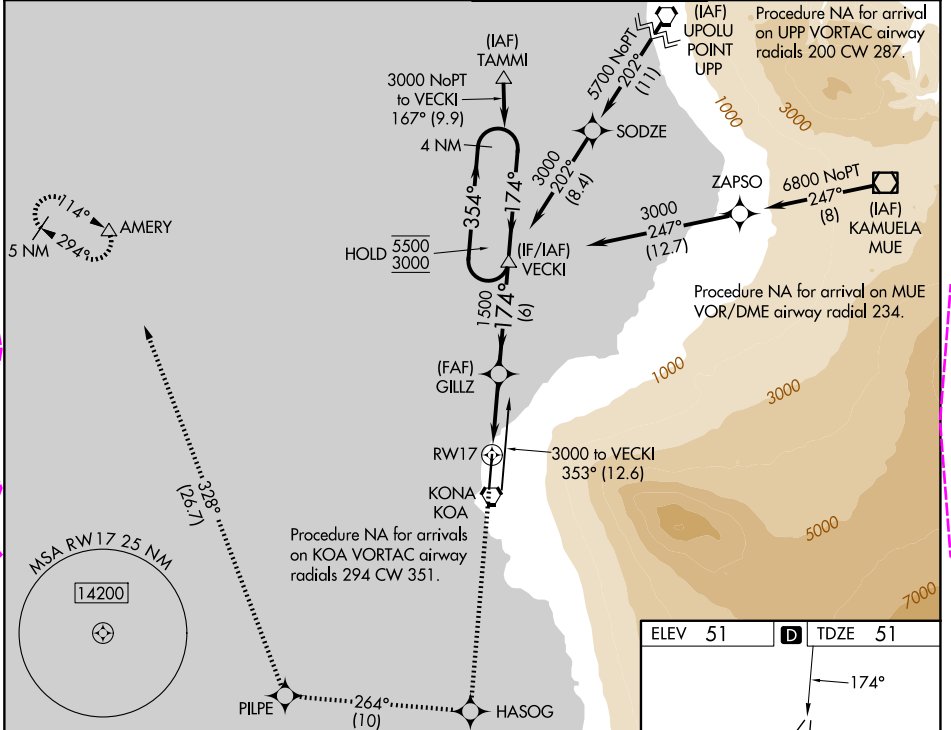
APP CRS	Rwy Ldg	11000
174°	TDZE	51
	Apt Elev	51

RNAV (GPS) Y RWY 17

ELLISON ONIZUKA KONA INTL AT KEAHOLE (KOA) (PHKO)

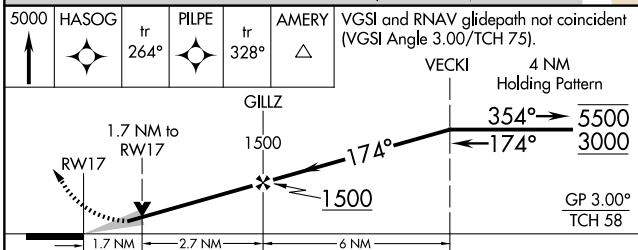
RNP APCH - GPS.	MALSR	MISSED APPROACH: Climb to 5000 direct HASOG and on track 264° to PILPE and on track 328° to AMERY and hold.
<p>⚠ Circling NA east of Rwy 17-35. WAAS VNAV NA. For uncompensated Baro-VNAV systems, LNAV/VNAV NA below -5°C or above 54°C. For inop ALS, increase LNAV/VNAV all Cats visibility to 1½ SM and increase LNAV Cat C & D visibility to 1¾ SM.</p>		

ATIS 127.4	HCF CENTER 118.45 278.3	KONA TOWER* 120.3 (CTAF) 0 254.3	GND CON 121.9
----------------------	-----------------------------------	--	-------------------------



PAC, 22 JAN 2026 to 19 MAR 2026

PAC, 22 JAN 2026 to 19 MAR 2026



ELEV 51	D	TDZE 51		
5000	HASOG	tr 264°		
	PILPE	tr 328°		
	AMERY			
VGSI and RNAV glidepath not coincident (VGSI Angle 3.00/TCH 75).				
	VECKI	4 NM Holding Pattern		
	GILLZ	1500		
	RWY 17	1.7 NM to RWY 17		
		2.7 NM		
		6 NM		
CATEGORY	A	B	C	D
LNAV/VNAV DA	544-1 493 (500-1)			
LNAV MDA	660-½	609 (700-½)	660-1¾	609 (700-1¾)
CIRCLING	660-1	609 (700-1)	660-1¾	660-2
		609 (700-1¾)	609 (700-2)	
REIL Rwy 17				
HIRL Rwy 17-35				

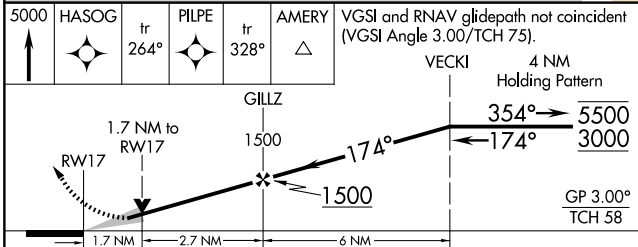
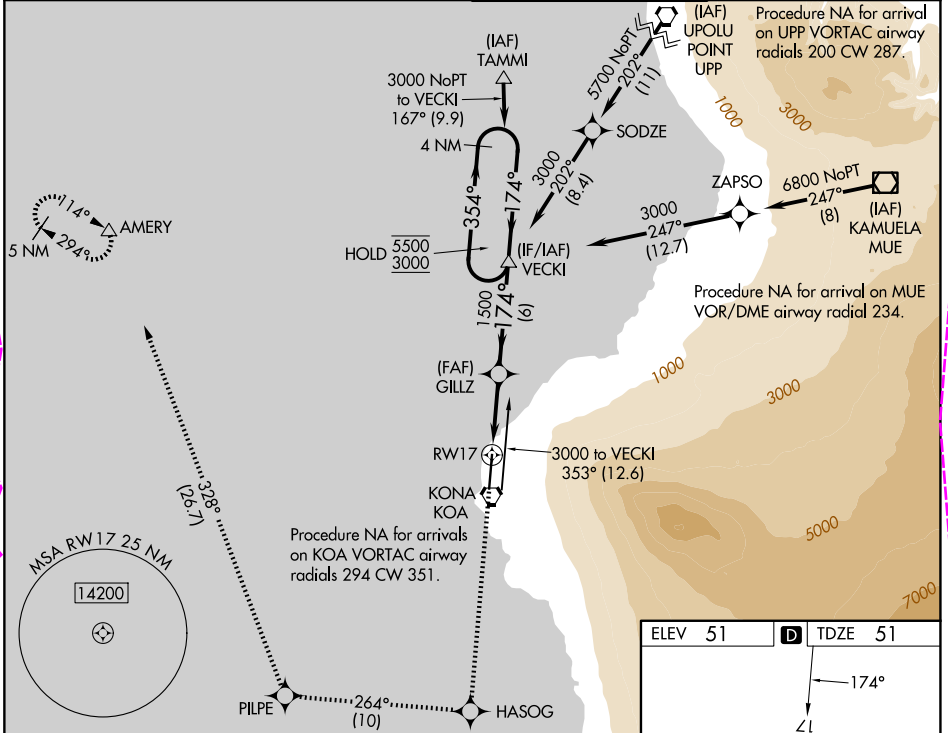
APP CRS	Rwy Ldg	11000
174°	TDZE	51
	Apt Elev	51

RNAV (GPS) Y RWY 17

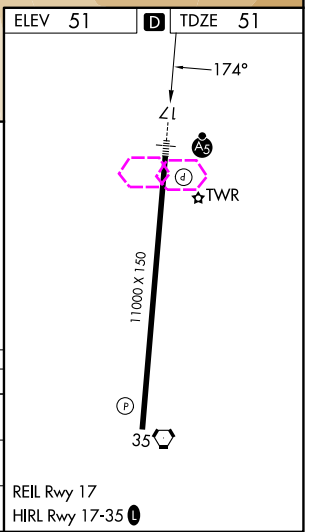
ELLISON ONIZUKA KONA INTL AT KEAHOLE (KOA) (PHKO)

RNP APCH - GPS.	MALSR	MISSED APPROACH: Climb to 5000 direct HASOG and on track 264° to PILPE and on track 328° to AMERY and hold.
<p>⚠ Circling NA east of Rwy 17-35. WAAS VNAV NA. For uncompensated Baro-VNAV systems, LNAV/VNAV NA below -5°C or above 54°C. For inop ALS, increase LNAV/VNAV all Cats visibility to 1½ SM and increase LNAV Cat C & D visibility to 1¾ SM.</p>		

ATIS 127.4	HCF CENTER 118.45 278.3	KONA TOWER* 120.3 (CTAF) 0 254.3	GND CON 121.9
----------------------	-----------------------------------	--	-------------------------



CATEGORY	A	B	C	D
LNAV/VNAV DA	544-1 493 (500-1)			
LNAV MDA	660-½ 609 (700-½)	660-1¾ 609 (700-1¾)		
CIRCLING	660-1 609 (700-1)	660-1¾ 609 (700-1¾)	660-2 609 (700-2)	



PAC: 19 MAR 2026 to 14 MAY 2026

PAC: 19 MAR 2026 to 14 MAY 2026