

KAILUA-KONA, HAWAII

AL-5761 (FAA)

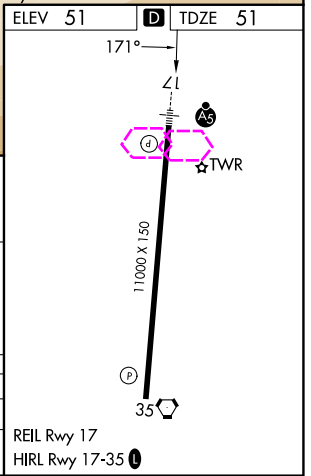
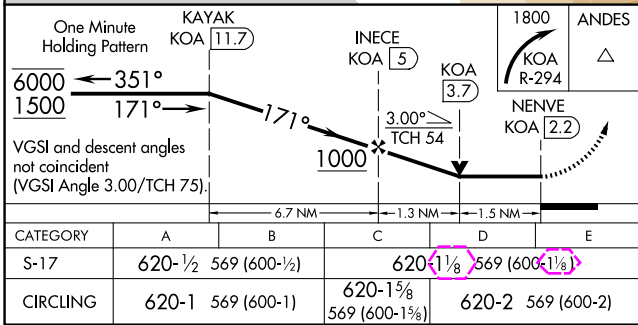
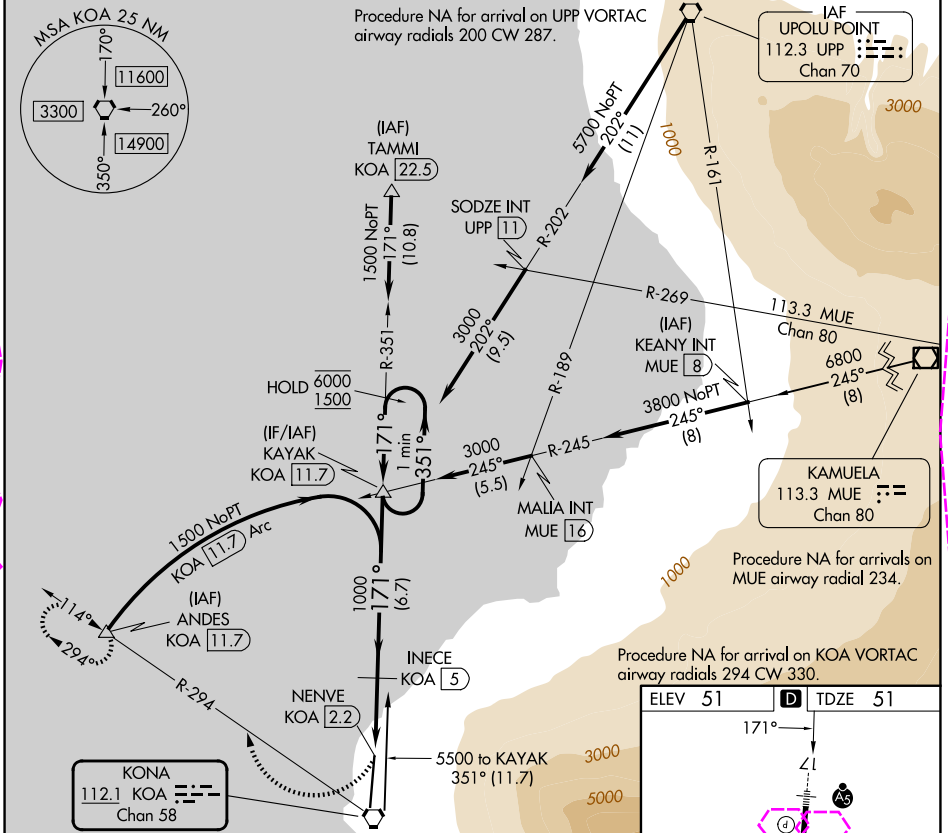
25331

VORTAC KOA 112.1 Chan 58	APP CRS 171°	Rwy Ldg 11000 TDZE 51 Apt Elev 51
--	------------------------	--

VOR or TACAN RWY 17

ELLISON ONIZUKA KONA INTL AT KEAHOLE (KOA) (PHKO)

DME required.		MALSR	MISSED APPROACH: Climbing right turn to 1800 on KOA VORTAC R-294 to ANDES/KOA 11.7 DME and hold.
<p>▼ Circling NA east of Rwy 17-35. For inop ALS, increase S-17 Cat E visibility to 1½ SM.</p>			
ATIS 127.4	HCF CENTER 118.45 278.3	KONA TOWER* 120.3 (CTAF) 0 254.3	GND CON 121.9



KAILUA-KONA, HAWAII
Amdt 3 27NOV25

ELLISON ONIZUKA KONA INTL AT KEAHOLE (KOA) (PHKO)
19°44'N-156°03'W

VOR or TACAN RWY 17

PAC: 22 JAN 2026 to 19 MAR 2026

PAC: 22 JAN 2026 to 19 MAR 2026

KAILUA-KONA, HAWAII

AL-5761 (FAA)

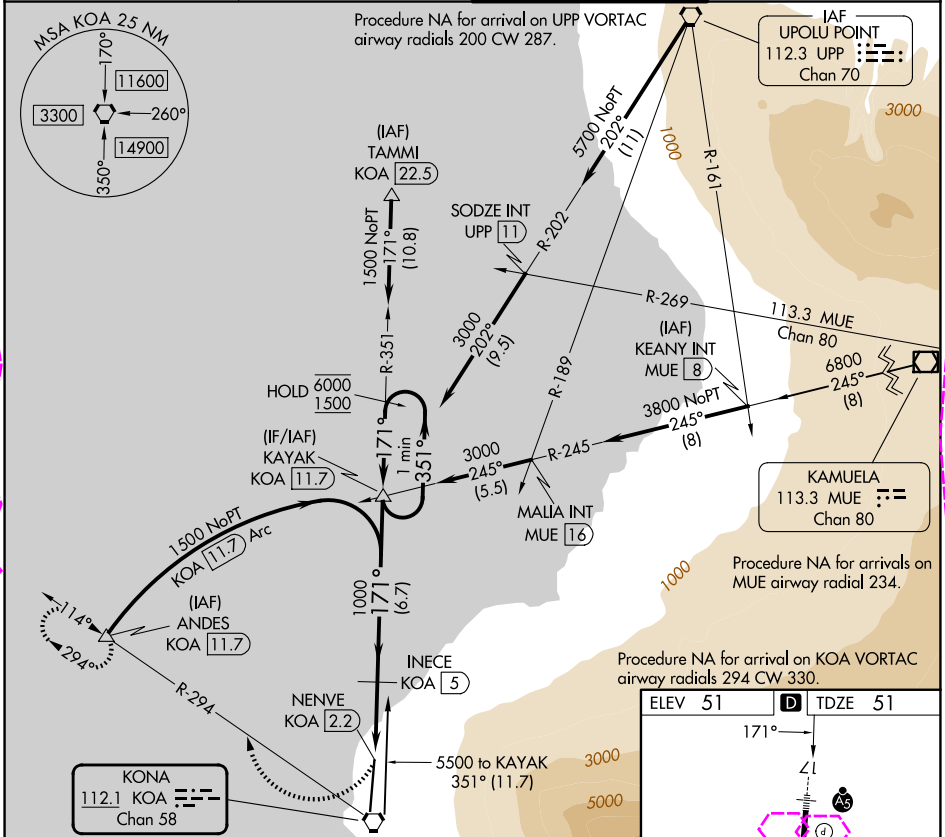
26078

VORTAC KOA 112.1 Chan 58	APP CRS 171°	Rwy Ldg 11000 TDZE 51 Apt Elev 51
--	------------------------	--

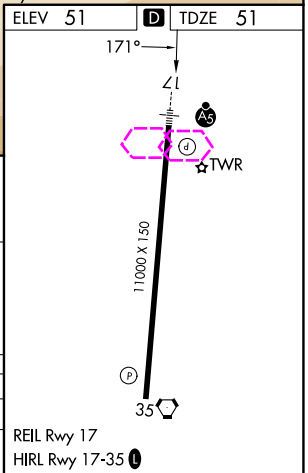
VOR or TACAN RWY 17

ELLISON ONIZUKA KONA INTL AT KEAHOLE (KOA) (PHKO)

DME required.	MALSR	MISSED APPROACH: Climbing right turn to 1800 on KOA VORTAC R-294 to ANDES/KOA 11.7 DME and hold.	
<p>▼ Circling NA east of Rwy 17-35. For inop ALS, increase S-17 Cat E visibility to 1½ SM.</p>			
ATIS 127.4	HCF CENTER 118.45 278.3	KONA TOWER* 120.3 (CTAF) 0 254.3	GND CON 121.9



One Minute Holding Pattern	KAYAK KOA 11.7		INECE KOA 5		KOA 3.7		1800 ANDES KOA R-294	
	6000 ← 351°	1500 ← 171°	171°	3.00° TCH 54	1000	3.00°	1.3 NM	1.5 NM
VGSIs and descent angles not coincident (VGSi Angle 3.00/TCH 75).								
CATEGORY	A	B	C	D	E			
S-17	620-½	569 (600-½)	620-¼	569 (600-¼)				
CIRCLING	620-1	569 (600-1)	620-1½	569 (600-1½)	620-2	569 (600-2)		



KAILUA-KONA, HAWAII
Amdt 3A 19MAR26

ELLISON ONIZUKA KONA INTL AT KEAHOLE (KOA) (PHKO)
19°44'N-156°03'W
VOR or TACAN RWY 17

PAC: 19 MAR 2026 to 14 MAY 2026

PAC: 19 MAR 2026 to 14 MAY 2026