

KAILUA-KONA, HAWAII

AL-5761 (FAA)

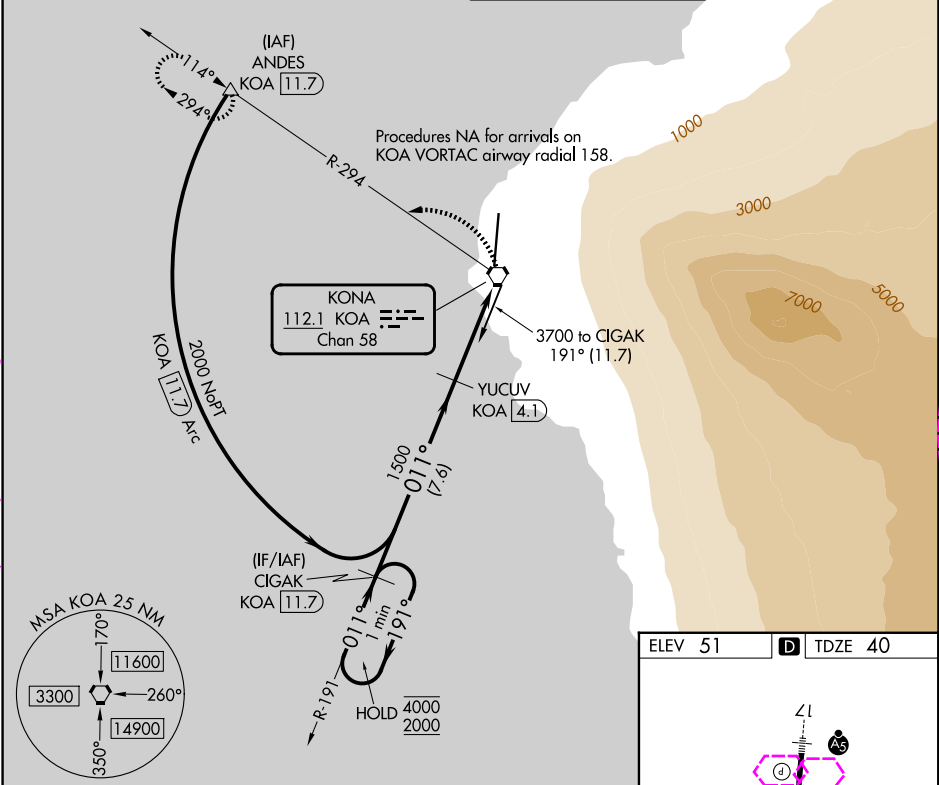
25331

VORTAC KOA <b>112.1</b> Chan 58	APP CRS <b>011°</b>	Rwy Ldg <b>11000</b> TDZE <b>40</b> Apt Elev <b>51</b>
---------------------------------------	------------------------	--

# VOR or TACAN RWY 35

ELLISON ONIZUKA KONA INTL AT KEAHOLE (KOA) (PHKO)

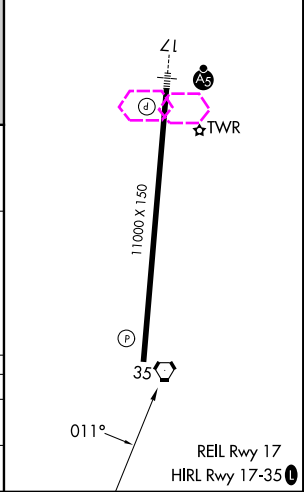
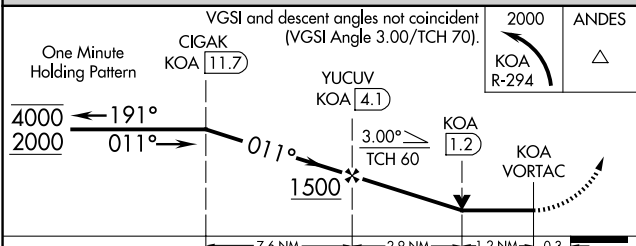
DME required.		MISSED APPROACH: Climbing left turn to 2000 on KOA VORTAC R-294 to ANDES/KOA 11.7 DME and hold.	
		Circling NA east of Rwy 17-35.	
ATIS <b>127.4</b>	HCF CENTER <b>118.45 278.3</b>	KONA TOWER* <b>120.3 (CTAF) 0 254.3</b>	GND CON <b>121.9</b>



PAC, 22 JAN 2026 to 19 MAR 2026

PAC, 22 JAN 2026 to 19 MAR 2026

ELEV 51	<b>D</b> TDZE 40
---------	------------------



CATEGORY	A	B	C	D	E
S-35	600-1	560 (600-1)	600-1½	560 (600-1½)	
CIRCLING	600-1	549 (600-1)	600-1½ 549 (600-1½)	620-2	569 (600-2)

KAILUA-KONA, HAWAII  
Amdt 3 27NOV25

19°44'N-156°03'W

ELLISON ONIZUKA KONA INTL AT KEAHOLE (KOA) (PHKO)  
VOR or TACAN RWY 35

KAILUA-KONA, HAWAII

AL-5761 (FAA)

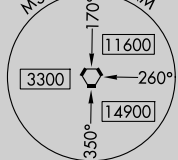
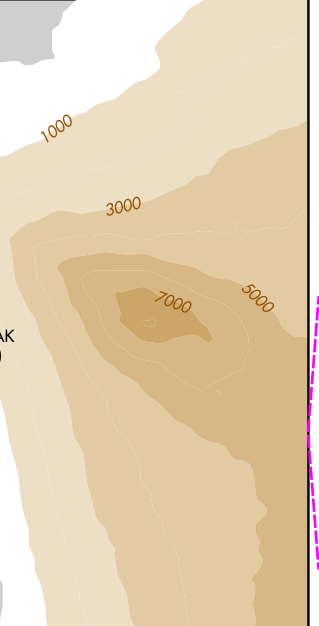
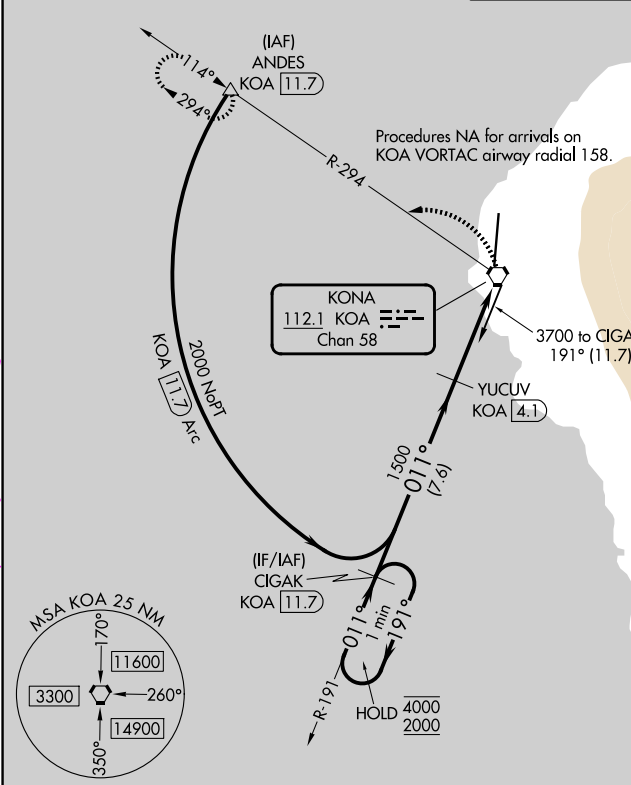
26078

VORTAC KOA <b>112.1</b> Chan 58	APP CRS <b>011°</b>	Rwy Ldg <b>11000</b> TDZE <b>40</b> Apt Elev <b>51</b>
---------------------------------------	------------------------	--

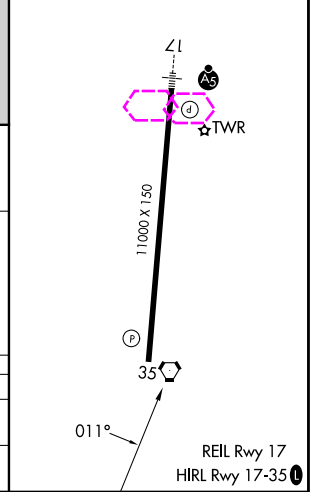
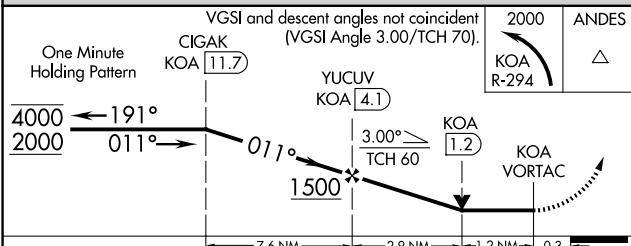
# VOR or TACAN RWY 35

ELLISON ONIZUKA KONA INTL AT KEAHOLE (KOA) (PHKO)

DME required.		MISSED APPROACH: Climbing left turn to 2000 on KOA VORTAC R-294 to ANDES/KOA 11.7 DME and hold.	
<p><b>⚠</b> Circling NA east of Rwy 17-35.</p>			
ATIS <b>127.4</b>	HCF CENTER <b>118.45 278.3</b>	KONA TOWER* <b>120.3 (CTAF) 0 254.3</b>	GND CON <b>121.9</b>



ELEV 51	<b>D</b> TDZE 40
---------	------------------



CATEGORY	A	B	C	D	E
S-35	600-1	560 (600-1)	600-1½	560 (600-1½)	
CIRCLING	600-1	549 (600-1)	600-1½ 549 (600-1½)	620-2	569 (600-2)

KAILUA-KONA, HAWAII  
Amdt 3 27NOV25

19°44'N-156°03'W

ELLISON ONIZUKA KONA INTL AT KEAHOLE (KOA) (PHKO)  
VOR or TACAN RWY 35

PAC. 19 MAR 2026 to 14 MAY 2026

PAC. 19 MAR 2026 to 14 MAY 2026