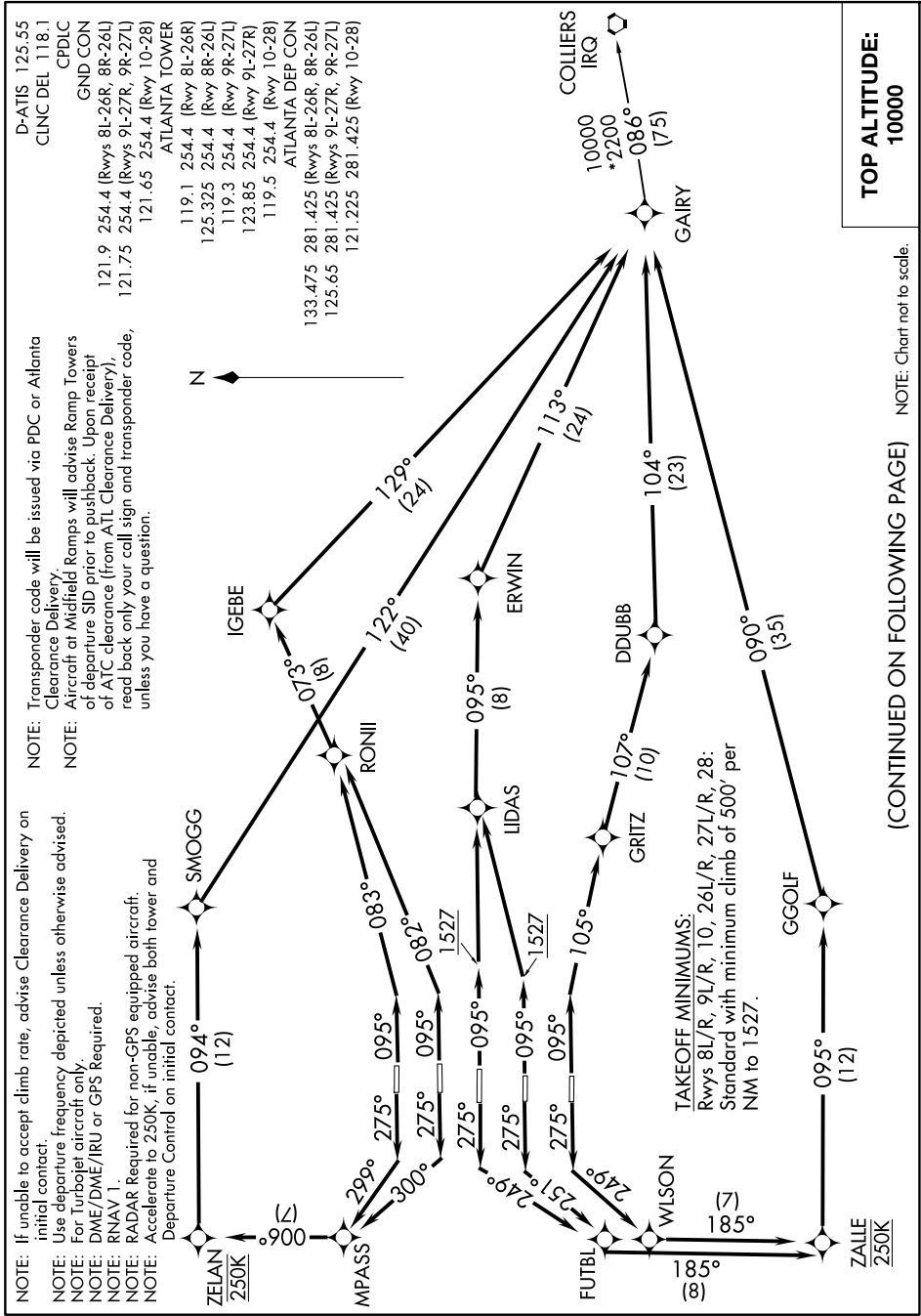


# GAIRY TWO DEPARTURE (RNAV)

SE-4, 16 APR 2026 to 14 MAY 2026



# GAIRY TWO DEPARTURE (RNAV)

SE-4, 16 APR 2026 to 14 MAY 2026



DEPARTURE ROUTE DESCRIPTION  
SEE ADDITIONAL REQUIREMENTS ON AAUP

TAKEOFF RWY 8L: Climb heading 095° to intercept course 083° to RONII, then on depicted route to GAIRY, thence. . . .

TAKEOFF RWY 8R: Climb heading 095° to intercept course 082° to RONII, then on depicted route to GAIRY, thence. . . .

TAKEOFF RWYS 9L/R: Climb heading 095° to 1527, then direct LIDAS, then on depicted route to GAIRY, thence. . . .

TAKEOFF RWY 10: Climb heading 095° to intercept course 105° to GRITZ, then on depicted route to GAIRY, thence. . . .

TAKEOFF RWY 26L: Climb heading 275° to intercept course 300° to MPASS, then on depicted route to GAIRY, maintain 250K until ZELAN, thence. . . .

TAKEOFF RWY 26R: Climb heading 275° to intercept course 299° to MPASS, then on depicted route to GAIRY, maintain 250K until ZELAN, thence. . . .

TAKEOFF RWY 27L: Climb heading 275° to intercept course 251° to FUTBL, then on depicted route to GAIRY, maintain 250K until ZALLE, thence. . . .

TAKEOFF RWY 27R: Climb heading 275° to intercept course 249° to FUTBL, then on depicted route to GAIRY, maintain 250K until ZALLE, thence. . . .

TAKEOFF RWY 28: Climb heading 275° to intercept course 249° to WLSON, then on depicted route to GAIRY, maintain 250K until ZALLE, thence. . . .

. . . .maintain 10000. Expect clearance to filed altitude ten minutes after departure.

COLLIERS TRANSITION (GAIRY2.IRQ)

SE-4, 16 APR 2026 to 14 MAY 2026

SE-4, 16 APR 2026 to 14 MAY 2026