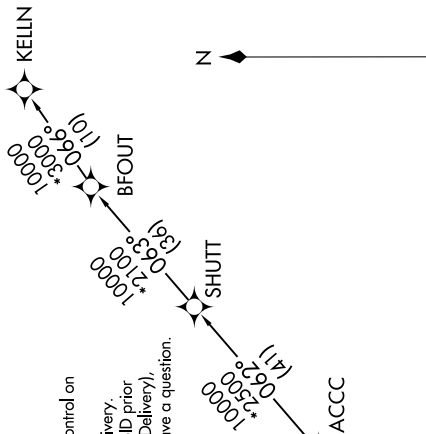


TOP ALTITUDE:
10000



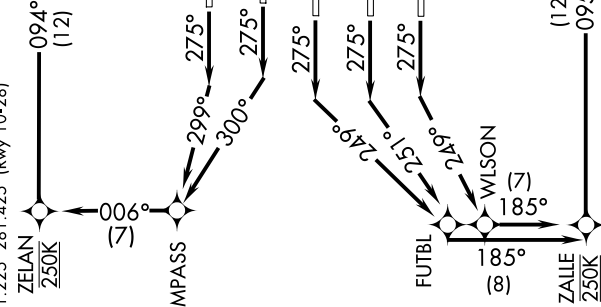
TAKEOFF MINIMUMS:
Rwys 8L/R, 9L/R, 10, 26L/R, 27L/R, 28:
Standard with minimum climb of 500' per
NM to 1527.

NOTE: Chart not to scale.

SE-4, 16 APR 2026 to 14 MAY 2026

NOTE: If unable to accept climb rate, advise Clearance Delivery on initial contact.
NOTE: Use departure frequency depicted unless otherwise advised.
NOTE: For Turboprop aircraft only.
NOTE: DME/DME/IRU or GPS Required.
NOTE: RNAV 1.
NOTE: RADAR Required for non-GPS equipped aircraft.
NOTE: Accelerate to 250K, if unable, advise both tower and Departure Control on initial contact.
NOTE: Transponder code will be issued via PDC or Atlanta Clearance Delivery.
NOTE: Aircraft at Midfield Ramps will advise Ramp Towers of departure SID prior to pushback. Upon receipt of ATC clearance (from ATL Clearance Delivery), read back only your call sign and transponder code, unless you have a question.

D-ATIS 125.55
CLNC DEL 118.1
CPDLC
GND CON
121.9 254.4 (Rwys 8L-26R, 8R-26L)
121.75 254.4 (Rwys 9L-27R, 9R-27L)
121.65 254.4 (Rwy 10-28)
ATLANTA TOWER
119.1 254.4 (Rwy 8L-26R)
125.325 254.4 (Rwy 8R-26L)
119.3 254.4 (Rwy 9R-27L)
123.85 254.4 (Rwy 9L-27R)
119.5 254.4 (Rwy 10-28)
ATLANTA DEP CON
133.475 281.425 (Rwys 8L-26R, 8R-26L)
125.65 281.425 (Rwys 9L-27R, 9R-27L)
121.225 281.425 (Rwy 10-28)



(CONTINUED ON FOLLOWING PAGE)

SE-4, 16 APR 2026 to 14 MAY 2026



DEPARTURE ROUTE DESCRIPTION
SEE ADDITIONAL REQUIREMENTS ON AAUP

TAKEOFF RWY 8L: Climb heading 095° to intercept course 083° to RONII, then on depicted route to JACCC, thence. . . .

TAKEOFF RWY 8R: Climb heading 095° to intercept course 082° to RONII, then on depicted route to JACCC, thence. . . .

TAKEOFF RWYS 9L/R: Climb heading 095° to 1527, then direct LIDAS, then on depicted route to JACCC, thence. . . .

TAKEOFF RWY 10: Climb heading 095° to intercept course 105° to GRITZ, then on depicted route to JACCC, thence. . . .

TAKEOFF RWY 26L: Climb heading 275° to intercept course 300° to MPASS, then on depicted route to JACCC, maintain 250K until ZELAN, thence. . . .

TAKEOFF RWY 26R: Climb heading 275° to intercept course 299° to MPASS, then on depicted route to JACCC, maintain 250K until ZELAN, thence. . . .

TAKEOFF RWY 27L: Climb heading 275° to intercept course 251° to FUTBL, then on depicted route to JACCC, maintain 250K until ZALLE, thence. . . .

TAKEOFF RWY 27R: Climb heading 275° to intercept course 249° to FUTBL, then on depicted route to JACCC, maintain 250K until ZALLE, thence. . . .

TAKEOFF RWY 28: Climb heading 275° to intercept course 249° to WLSON, then on depicted route to JACCC, maintain 250K until ZALLE, thence. . . .

. . . .maintain 10000. Expect clearance to filed altitude ten minutes after departure.

KELLN TRANSITION (JACCC2.KELLN)

SE-4, 16 APR 2026 to 14 MAY 2026

SE-4, 16 APR 2026 to 14 MAY 2026