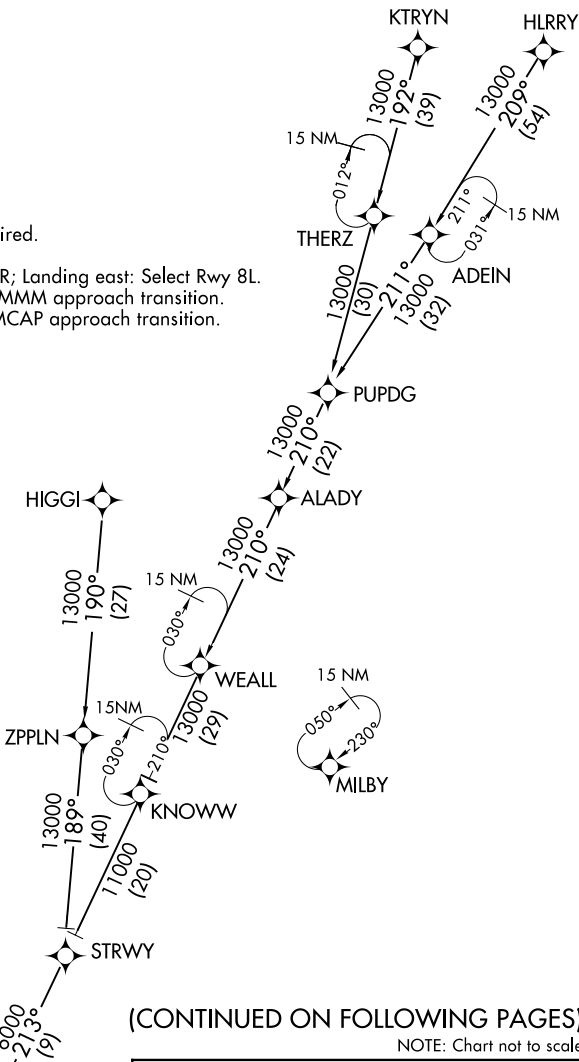


ONDRE ONE ARRIVAL (RNAV) Transition Routes

D-ATIS ARR
119.65
ATLANTA APP CON
128.525 379.9

- NOTE: RADAR required.
- NOTE: RNAV 1.
- NOTE: DME/DME/IRU or GPS required.
- NOTE: Turbojet aircraft only.
- NOTE: Landing west: Select Rwy 26R; Landing east: Select Rwy 8L.
- NOTE: Landing Rwy 27L: Select ROMMM approach transition.
- NOTE: Landing Rwy 27R: Select MMCAP approach transition.



ONDRE
13000
Landing west
Expect 250K
See following page
for Arrival Routes.

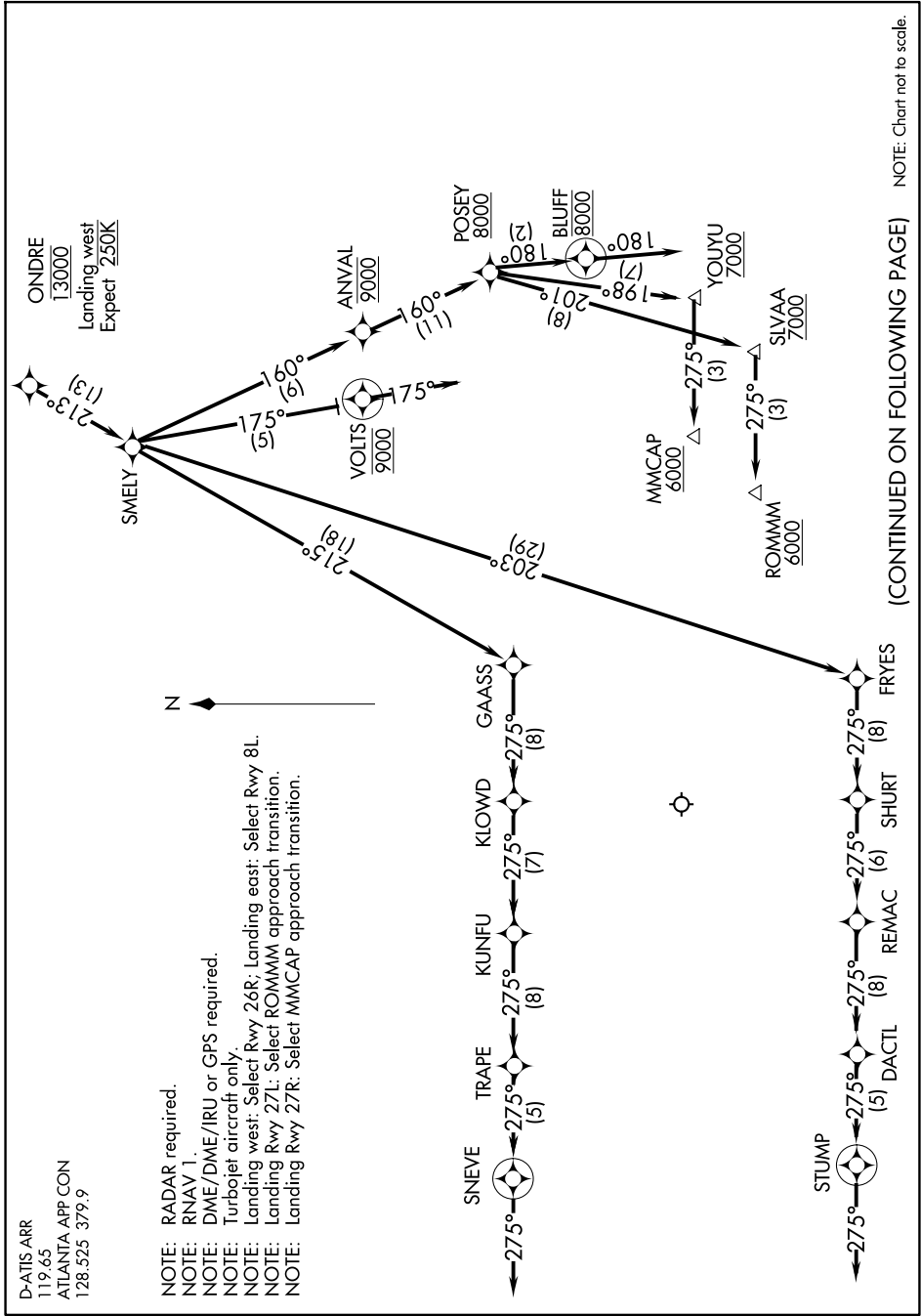
- (CONTINUED ON FOLLOWING PAGES)
NOTE: Chart not to scale.
- HIGGI TRANSITION (HIGGI.ONDRE1):
For TYS departures or assigned by ATC only.
 - HLRRY TRANSITION (HLRRY.ONDRE1)
 - KTRYN TRANSITION (KTRYN.ONDRE1)
 - PUPDG TRANSITION (PUPDG.ONDRE1)
 - STRWY TRANSITION (STRWY.ONDRE1)

SE-4, 16 APR 2026 to 14 MAY 2026

SE-4, 16 APR 2026 to 14 MAY 2026

ONDRE ONE ARRIVAL (RNAV) Arrival Routes

SE-4, 16 APR 2026 to 14 MAY 2026



D-ATIS ARR
119.65
ATLANTA APP CON
128.525 379.9

- NOTE: RADAR required.
- NOTE: RNAV 1
- NOTE: DME/DME/IRU or GPS required.
- NOTE: Turboprop aircraft only.
- NOTE: Landing west: Select Rwy 26R; Landing east: Select Rwy 8L.
- NOTE: Landing Rwy 27L: Select ROMMM approach transition.
- NOTE: Landing Rwy 27R: Select MMCAP approach transition.

(CONTINUED ON FOLLOWING PAGE)

SE-4, 16 APR 2026 to 14 MAY 2026

ARRIVAL ROUTE DESCRIPTION

From ONDR on track 213° to SMELY.

LANDING RWYS 8L/R: From SMELY on track 215° to GAASS, then on track 275° to KLOWD, then on track 275° to KUNFU, then on track 275° to TRAPE, then on track 275° to SNEVE, then on track 275°. Expect RADAR vectors to final approach course.

LANDING RWYS 9L/R, 10: From SMELY on track 203° to FRYES, then on track 275° to SHURT, then on track 275° to REMAC, then on track 275° to DACTL, then on track 275° to STUMP, then on track 275°. Expect RADAR vectors to final approach course.

LANDING RWYS 26L/R: From SMELY on track 175° to cross VOLTS at 9000, then on track 175°. Expect RADAR vectors to final approach course.

LANDING RWY 27L: From SMELY on track 160° to cross ANVAL at 9000, then on track 160° to cross POSEY at or above 8000, then on track 201° to cross SLVAA at or above 7000, then on track 275° to cross ROMMM at or above 6000. Expect ILS RWY 27L approach.

LANDING RWY 27R: From SMELY on track 160° to cross ANVAL at 9000, then on track 160° to cross POSEY at or above 8000, then on track 198° to cross YOUYU at or above 7000, then on track 275° to cross MMCAP at or above 6000. Expect ILS RWY 27R approach.

LANDING RWY 28: From SMELY on track 160° to cross ANVAL at 9000, then on track 160° to POSEY at or above 8000, then on track 180° to cross BLUFF at 8000, then on track 180. Expect RADAR vectors to final approach course.

LOST COMMUNICATIONS

LANDING EAST: ASSIGNED RWY 8L OR RWY NOT ASSIGNED: Cross ONDR at 13000; cross GAASS at 12000, cross KUNFU at or above 7000; cross SNEVE at 5000; after SNEVE turn left direct LARII and proceed on the ILS or RNAV Rwy 8L approach.

LANDING EAST: ASSIGNED RWY 8R: Cross ONDR at 13000; cross GAASS at 12000; cross KUNFU at or above 7000; cross SNEVE at 5000; after SNEVE turn left direct GPEAT and proceed on the ILS or RNAV Rwy 8R approach.

LANDING EAST: ASSIGNED RWY 9L: Cross ONDR at 13000; cross FRYES at 12000; cross REMAC at or above 7000; cross STUMP at 4000; after STUMP turn right direct RYENN and proceed on the ILS or RNAV Rwy 9L approach.

LANDING EAST: ASSIGNED RWY 9R: Cross ONDR at 13000; cross FRYES at 12000; cross REMAC at or above 7000; cross STUMP at 4000; after STUMP turn right direct ANDIY and proceed on the ILS or RNAV Rwy 9R approach.

LANDING EAST: ASSIGNED RWY 10: Cross ONDR at 13000; cross FRYES at 12000; cross REMAC at or above 7000; cross STUMP at 4000; after STUMP turn right direct DEWHY and proceed on the ILS or RNAV Rwy 10 approach.

LANDING WEST: ASSIGNED RWY 26R OR RWY NOT ASSIGNED: Cross ONDR at 13000; cross VOLTS at 9000; after VOLTS descend to 6000 and proceed direct ZELOW; proceed on the ILS or RNAV Rwy 26R approach.

LANDING WEST: ASSIGNED RWY 26L: Cross ONDR at 13000; cross VOLTS at 9000; after VOLTS descend to 6000 and proceed direct JIRRI; proceed on the ILS or RNAV Rwy 26L approach.

LANDING WEST: ASSIGNED RWY 28: Cross ONDR at 13000; cross ANVAL at 9000; cross POSEY at or above 8000; cross BLUFF at 8000; after BLUFF descend to 6000 and proceed direct PRMAN; proceed on the ILS or RNAV Rwy 28 approach.

SE-4, 16 APR 2026 to 14 MAY 2026

SE-4, 16 APR 2026 to 14 MAY 2026