

ATLANTA, GEORGIA

AL-26 (FAA)

26078

WAAS CH 56300 W26A	APP CRS 275°	Rwy Ldg 9999 TDZE 996 Apt Elev 1026
--	------------------------	--

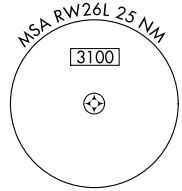
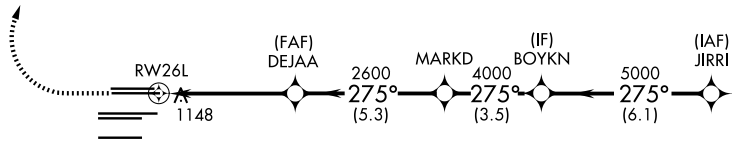
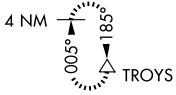
RNAV (GPS) RWY 26L
HARTSFIELD/JACKSON ATLANTA INTL (ATL)

▼ For uncompensated Baro-VNAV systems, LNAV/VNAV NA below -7°C (20°F) or above 54°C (130°F). DME/DME RNP-0.3 NA. For inop MALSR, increase LPV all Cats visibility to RVR 4500, LNAV/VNAV all Cats visibility to RVR 6000. Simultaneous approach authorized with Rwy 27L or 27R or 28. LNAV procedure NA during simultaneous operations. Use of FD or AP providing RNAV track guidance required during simultaneous operations.



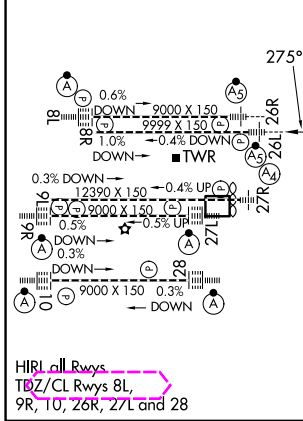
MISSED APPROACH:
Climb to 1500 then climbing right turn to 3500 direct TROYS and hold.

D-ATIS 119.65	ATLANTA APP CON 127.9 379.9	ATLANTA TOWER 8L-26R 119.1 8R-26L 125.325 9L-27R 123.85 9R-27L 119.3 10-28 119.5 ALL RWYS 254.4					GND CON 121.9	ALL RWYS 121.75 121.65 254.4
-------------------------	---------------------------------------	--	--	--	--	--	-------------------------	--



ELEV 1026	D	TDZE 996
-----------	----------	----------

RADAR REQUIRED



1500	3500	TROYS	VGSI and RNAV glidepath not coincident (VGSI Angle 3.00/TCH 63).	
↑	↷	△	BOYKN	JIRRI
*LNAV only.			MARKD	JIRRI
*1.3 NM to RWY 26L			DEJAA	JIRRI
RWY 26L			2600	5000
			4000	275°
			5000	5000
			2600	GP 3.00°
			1.3	TCH 52
			3.6 NM	
			5.3 NM	
			3.5 NM	
			6.1 NM	
CATEGORY	A	B	C	D
LPV DA		1281/24	285 (300-½)	
LNAV/VNAV DA		1360/35	364 (400-½)	
LNAV MDA	1460/24	464 (500-½)	1460/50	464 (500-1)

ATLANTA, GEORGIA
Amdt 4 18SEP14

33°38'N-84°26'W

HARTSFIELD/JACKSON ATLANTA INTL (ATL)
RNAV (GPS) RWY 26L

SE-4, 19 MAR 2026 to 16 APR 2026

SE-4, 19 MAR 2026 to 16 APR 2026

