

(SMLTZ3.SMLTZ) 24305

HARTSFIELD/JACKSON ATLANTA INTL(ATL)

SMLTZ THREE DEPARTURE (RNAV)

AL-26 (FAA)

ATLANTA, GEORGIA

D-ATIS 125.55
CLNC DEL 118.1
CPDLC

RNAV 1 - DME/DME/IRU or GPS.

RADAR required for non-GPS equipped aircraft.

**TOP ALTITUDE:
10000**

GND CON

121.9 254.4 (Rwys 8L-26R, 8R-26L)
121.75 254.4 (Rwys 9L-27R, 9R-27L)
121.65 254.4 (Rwy 10-28)

ATLANTA TOWER

119.1 254.4 (Rwy 8L-26R)
125.325 254.4 (Rwy 8R-26L)
119.3 254.4 (Rwy 9R-27L)
123.85 254.4 (Rwy 9L-27R)
119.5 254.4 (Rwy 10-28)

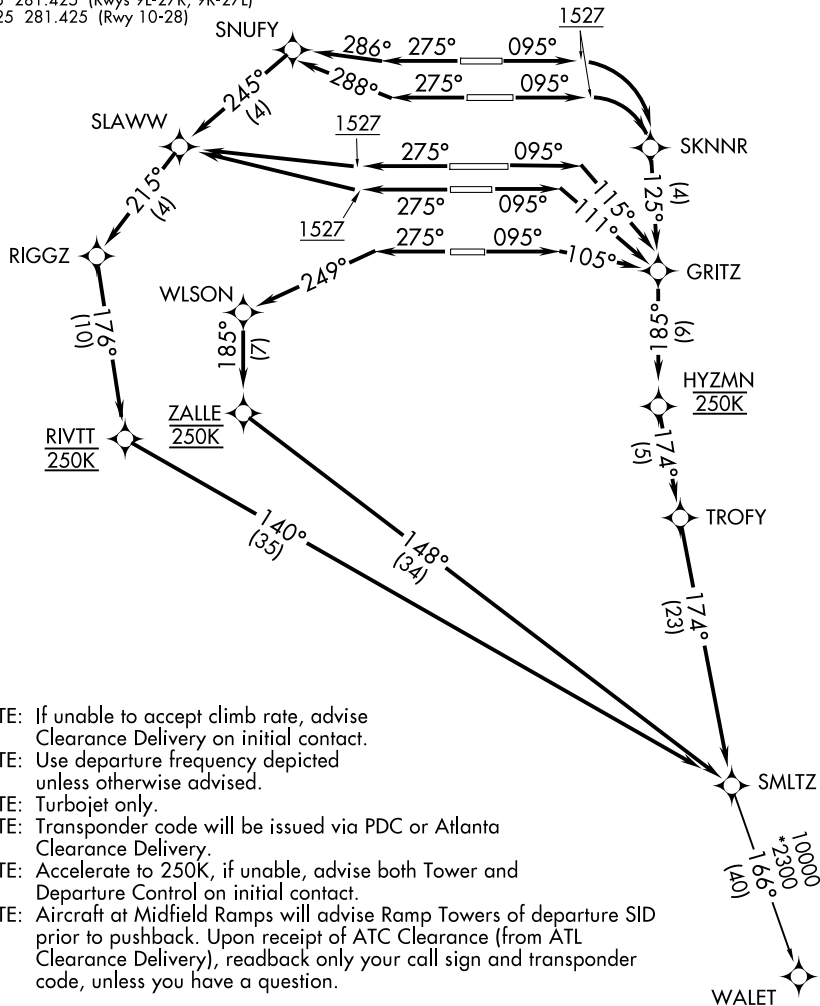
ATLANTA DEP CON

133.475 281.425 (Rwys 8L-26R, 8R-26L)
125.65 281.425 (Rwys 9L-27R, 9R-27L)
121.225 281.425 (Rwy 10-28)

TAKEOFF MINIMUMS:

Rwys 8L/R, 9L/R, 10, 26L/R, 27L/R, 28:

Standard with minimum climb of 500' per NM to 1527.



- NOTE: If unable to accept climb rate, advise Clearance Delivery on initial contact.
- NOTE: Use departure frequency depicted unless otherwise advised.
- NOTE: Turbojet only.
- NOTE: Transponder code will be issued via PDC or Atlanta Clearance Delivery.
- NOTE: Accelerate to 250K, if unable, advise both Tower and Departure Control on initial contact.
- NOTE: Aircraft at Midfield Ramps will advise Ramp Towers of departure SID prior to pushback. Upon receipt of ATC Clearance (from ATL Clearance Delivery), readback only your call sign and transponder code, unless you have a question.

(CONTINUED ON FOLLOWING PAGE)

NOTE: Chart not to scale.

SE-4, 16 APR 2026 to 14 MAY 2026

SE-4, 16 APR 2026 to 14 MAY 2026

SMLTZ THREE DEPARTURE (RNAV)

ATLANTA, GEORGIA

(SMLTZ3.SMLTZ) 19MAY22

HARTSFIELD/JACKSON ATLANTA INTL(ATL)



DEPARTURE ROUTE DESCRIPTION
SEE ADDITIONAL REQUIREMENTS ON AAUP

TAKEOFF RUNWAYS 8L/R: Climb on heading 095° to 1527, then right turn direct SKNNR, then on depicted route to SMLTZ, maintain 250K to HYZMN, thence. . . .

TAKEOFF RUNWAY 9L: Climb on heading 095° to intercept course 115° to GRITZ, then on depicted route to SMLTZ, maintain 250K to HYZMN, thence. . . .

TAKEOFF RUNWAY 9R: Climb on heading 095° to intercept course 111° to GRITZ, then on depicted route to SMLTZ, maintain 250K to HYZMN, thence. . . .

TAKEOFF RUNWAY 10: Climb on heading 095° to intercept course 105° to GRITZ, then on depicted route to SMLTZ, maintain 250K to HYZMN, thence. . . .

TAKEOFF RUNWAY 26L: Climb on heading 275° to intercept course 288° to SNUFY, then on depicted route to SMLTZ, maintain 250K to RIVTT, thence. . . .

TAKEOFF RUNWAY 26R: Climb on heading 275° to intercept course 286° to SNUFY, then on depicted route to SMLTZ, maintain 250K to RIVTT, thence. . . .

TAKEOFF RUNWAYS 27L/R: Climb on heading 275° to 1527, then direct SLAWW, then on depicted route to SMLTZ, maintain 250K to RIVTT, thence. . . .

TAKEOFF RUNWAY 28: Climb on heading 275° to intercept course 249° to WLSON, then on depicted route to SMLTZ, maintain 250K to ZALLE, thence. . . .

. . . .(Transition). Maintain 10000. Expect clearance to filed altitude ten minutes after departure.

WALET TRANSITION (SMLTZ3.WALET)

SE-4, 16 APR 2026 to 14 MAY 2026

SE-4, 16 APR 2026 to 14 MAY 2026