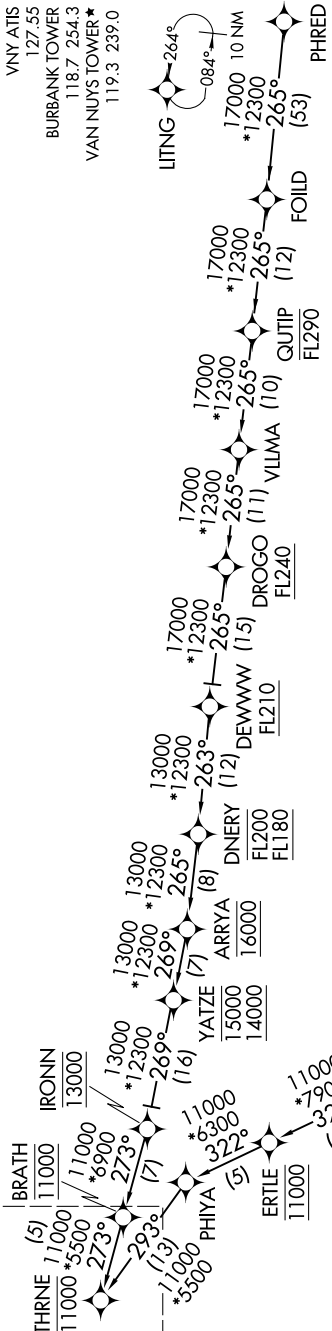


SW-3, 16 APR 2026 to 14 MAY 2026

RNAV 1 - DME/DME/IRU or GPS.
RADAR required.

See following page for arrival routes.



- SOCAL APP CON
126.7 370.95
- BUR D-ATIS
134.5
- VNY ATIS
127.55
- BURBANK TOWER
118.7 254.3
- VAN NUYS TOWER *
119.3 239.0

NOTE: Jet and turboprop aircraft only.
NOTE: Expect local area altimeter setting FL200.

NOTE: Chart not to scale.

AMMOR TRANSITION (AMMOR.THRNE4)
PHRED TRANSITION (PHRED.THRNE4)

(CONTINUED ON FOLLOWING PAGE)

SW-3, 16 APR 2026 to 14 MAY 2026

THRNE FOUR ARRIVAL (RNAV) Arrival Routes

AL-67 (FAA)

BURBANK, CALIFORNIA

SW-3, 16 APR 2026 to 14 MAY 2026

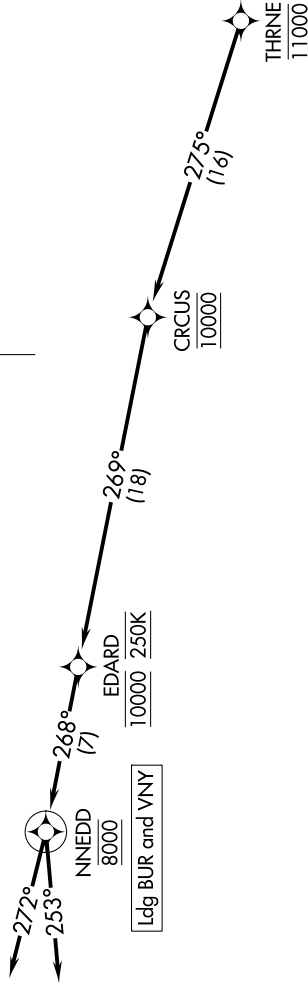
RNAV 1 - DME/DME/IRU or GPS.
RADAR required.

NOTE: Jet and turboprop aircraft only.
NOTE: Expect local area altimeter setting reaching FL200.

SOCAL APP CON
126.7 370.95
BUR D-ATIS
134.5
VNY ATIS
127.55
BURBANK TOWER
118.7 254.3
VAN NUYS TOWER ★
119.3 239.0



BOB HOPE
VAN NUYS



ARRIVAL ROUTE DESCRIPTION

LANDING BUR: From THRNE on track 275° to cross CRCUS at 10000, then on track 269° to cross EDARD at 10000 and at 250K, then on track 268° to cross NNEDD at 8000, then on track 253° . Expect RADAR vectors to final approach course.

LANDING VNY: From THRNE on track 275° to cross CRCUS at 10000, then on track 269° to cross EDARD at 10000 and at 250K, then on track 268° to cross NNEDD at 8000, then on track 272° . Expect RADAR vectors to final approach course.

NOTE: Chart not to scale.

THRNE FOUR ARRIVAL (RNAV) Arrival Routes

BURBANK, CALIFORNIA

SW-3, 16 APR 2026 to 14 MAY 2026