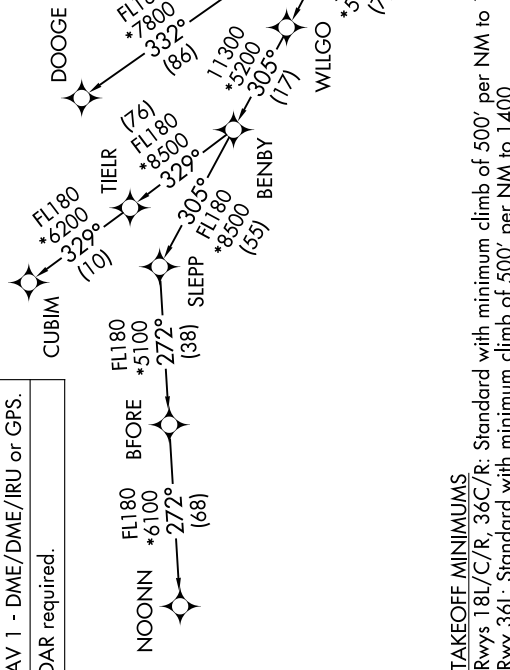


JOJO FIVE DEPARTURE (RNAV)

CHARLOTTE DEP CON
120.5 257.2
D-ATIS DEP
132.1
CUNC DEL
127.15 348.6
CPDIC
GND CON
121.8 348.6 (WEST)
121.9 348.6 (EAST)
CHARLOTTE TOWER
118.1 257.8 (Rwy 18L-36R)
126.4 257.8 (Rwy 18C-36C)
133.35 257.8 (Rwy 18R-36L)

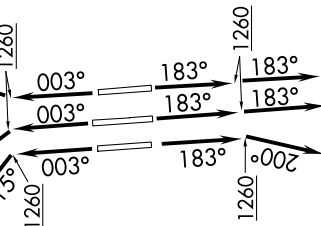
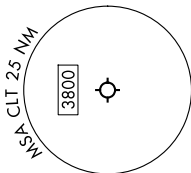
**TOP ALTITUDE:
8000**



TAKEOFF MINIMUMS

Rwys 18L/C/R, 36C/R: Standard with minimum climb of 500' per NM to 1260.
 Rwy 36L: Standard with minimum climb of 500' per NM to 1400.

- NOTE: For turbo jets only.
- NOTE: If unable to accept climb rates, advise ATC on initial contact.
- NOTE: NOONN Transition ATC assigned only.
- NOTE: Accelerate to 250K, if unable advise ATC. Upon reaching 10000 MSL, accelerate to and maintain 280K, if unable advise ATC.



(CONTINUED ON FOLLOWING PAGE)

NOTE: Chart not to scale.

JOJO FIVE DEPARTURE (RNAV)

JOJJO FIVE DEPARTURE (RNAV)



DEPARTURE ROUTE DESCRIPTION SEE ADDITIONAL REQUIREMENTS ON AAUP

TAKEOFF RUNWAYS 18L/C: Climb on heading 183° to 1260, then on heading 183° or as assigned by ATC on RADAR vectors to WAYDS, thence. . . .

TAKEOFF RUNWAY 18R: Climb on heading 183° to 1260, then on heading 200° or as assigned by ATC on RADAR vectors to WAYDS, thence. . . .

TAKEOFF RUNWAY 36L: Climb on heading 003° to 1260, then on heading 315° or as assigned by ATC on RADAR vectors to WAYDS, thence. . . .

TAKEOFF RUNWAY 36C: Climb on heading 003° to 1260, then on heading 330° or as assigned by ATC on RADAR vectors to WAYDS, thence. . . .

TAKEOFF RUNWAY 36R: Climb on heading 003° to 1260, then on heading 025° or as assigned by ATC on RADAR vectors to WAYDS, thence. . . .

. . . .on depicted route to JOJJO, then on assigned transition. Maintain 8000.
Expect clearance to filed altitude within 10 minutes after departure.

- CUBIM TRANSITION (JOJJO5.CUBIM)
- DOOGE TRANSITION (JOJJO5.DOOGE)
- NOONN TRANSITION (JOJJO5.NOONN)

SE-2, 16 APR 2026 to 14 MAY 2026

SE-2, 16 APR 2026 to 14 MAY 2026