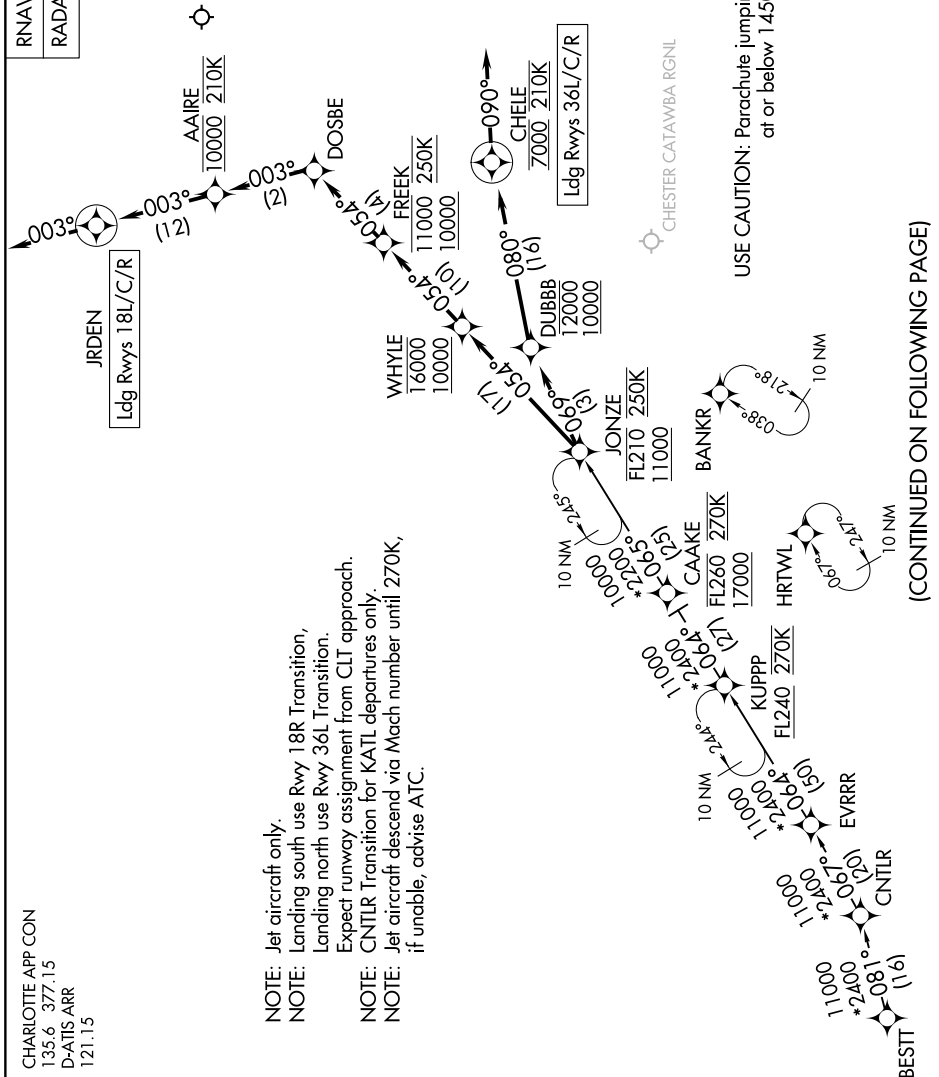


JONZE FIVE ARRIVAL (RNAV)

SE-2, 16 APR 2026 to 14 MAY 2026

CHARLOTTE APP CON
135.6 377.15
D-ATIS ARR
121.15

RNAV 1 - DME/DME/IRU or GPS.
RADAR required.



- NOTE: Jet aircraft only.
- NOTE: Landing south use Rwy 18R Transition, Landing north use Rwy 36L Transition.
- NOTE: Expect runway assignment from CLT approach. CNLTR Transition for KATL departures only.
- NOTE: Jet aircraft descend via Mach number until 270K, if unable, advise ATC.

USE CAUTION: Parachute jumping, 3 NM radius KDCM at or below 14500 MSL.

(CONTINUED ON FOLLOWING PAGE)

NOTE: Chart not to scale.

SE-2, 16 APR 2026 to 14 MAY 2026

JONZE FIVE ARRIVAL (RNAV)

JONZE FIVE ARRIVAL (RNAV)

ARRIVAL ROUTE DESCRIPTION

BESTT TRANSITION (BESTT.JONZE5)

CNTRLR TRANSITION (CNTRLR.JONZE5)

LANDING RUNWAYS 18L/C/R: From JONZE on track 054° to cross WHYLE between 10000 and 16000, then on track 054° to cross FREEK between 10000 and 11000 and at 250K, then on track 054° to DOSBE, then on track 003° to cross AAIRE at 10000 and at 210K, then on track 003° to JRDEN, then on track 003°. Expect RADAR vectors to final approach course.

LANDING RUNWAYS 36L/C/R: From JONZE on track 069° to cross DUBBB between 10000 and 12000, then on track 080° to cross CHELE at 7000 and at 210K, then on track 090°. Expect RADAR vectors to final approach course.

SE-2, 16 APR 2026 to 14 MAY 2026

SE-2, 16 APR 2026 to 14 MAY 2026