

ZOOMM THREE DEPARTURE (RNAV)

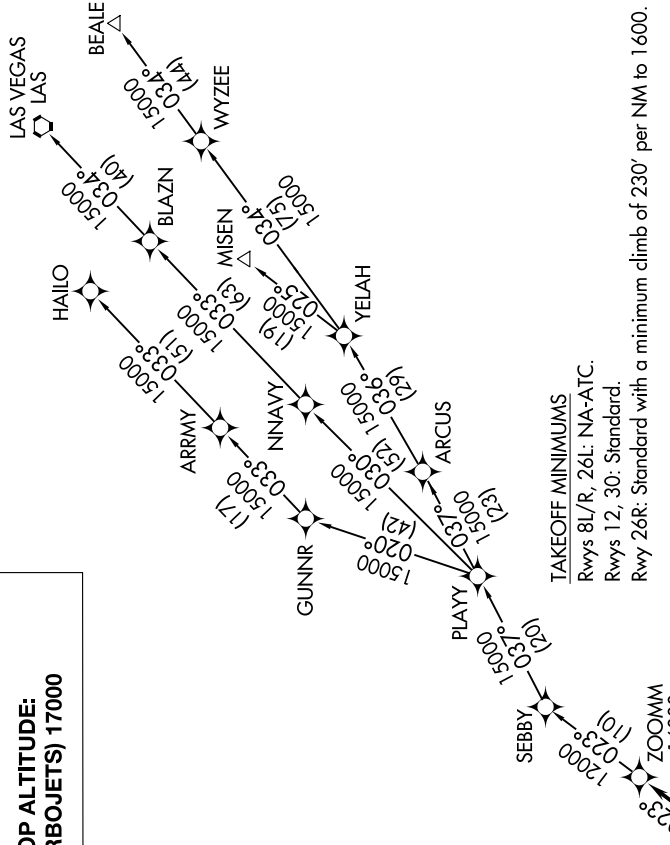
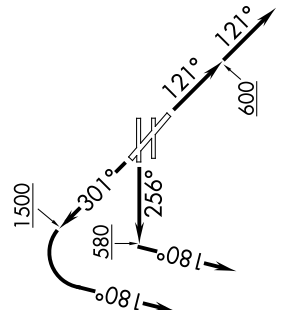
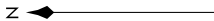
AL-236 (FAA)

LONG BEACH (DAUGHERTY FLD) (LGB)
LONG BEACH, CALIFORNIA

SW-3, 16 APR 2026 to 14 MAY 2026

**TOP ALTITUDE:
(TURBOJETS) 17000**

ATIS 127.75
 CINC DEL 118.15
 GND CON 133.0, 257.6
 SOCIAL DEP CON 125.35 316.125 (Rwy 12)
 127.2 269.6 (Rwys 26R, 30)



TAKEOFF MINIMUMS

Rwys 8L/R, 26L: NA-ATC.

Rwys 12, 30: Standard.

Rwy 26R: Standard with a minimum climb of 230' per NM to 1600.

NOTE: RADAR required.

NOTE: RNAV 1

NOTE: DME/DME/IRU or GPS required.

NOTE: Turbojet only.

NOTE: MISEN TRANSITION restricted to aircraft landing LAS terminal area.

NOTE: HAILO/ LAS/ NNAV transitions ATC only.

(NARRATIVE ON FOLLOWING PAGE)

NOTE: Chart not to scale.

ZOOMM THREE DEPARTURE (RNAV)

SW-3, 16 APR 2026 to 14 MAY 2026



DEPARTURE ROUTE DESCRIPTION

TAKEOFF RUNWAY 12: Climb on heading 121° to 600, then on heading 121° or as assigned by ATC for vectors to cross CAHIL at or above 15000, then on track 023° to cross ZOOMM at or above 16000, thence. . . .

TAKEOFF RUNWAY 26R: Climb on heading 256° to 580, then on heading 180° or as assigned by ATC for vectors to cross CAHIL at or above 15000, then on track 023° to cross ZOOMM at or above 16000, thence. . . .

TAKEOFF RUNWAY 30: Climb on heading 301° to 1500, then left turn heading 180° or as assigned by ATC for vectors to cross CAHIL at or above 15000, then on track 023° to cross ZOOMM at or above 16000, thence. . . .

. . . .on (transition) turbojets maintain 17000, expect filed altitude 10 minutes after departure.

BEALE TRANSITION (ZOOMM3.BEALE)

HAILO TRANSITION (ZOOMM3.HAILO)

LAS VEGAS TRANSITION (ZOOMM3.LAS)

MISEN TRANSITION (ZOOMM3.MISEN)

NNAVY TRANSITION (ZOOMM3.NNAVY)

SW-3, 16 APR 2026 to 14 MAY 2026

SW-3, 16 APR 2026 to 14 MAY 2026