

LOC/DME I-JMJ <b>110.5</b> Chan 42	APP CRS <b>283°</b>	Rwy Ldg <b>11000</b> TDZE <b>23</b> Apt Elev <b>31</b>
--	------------------------	--

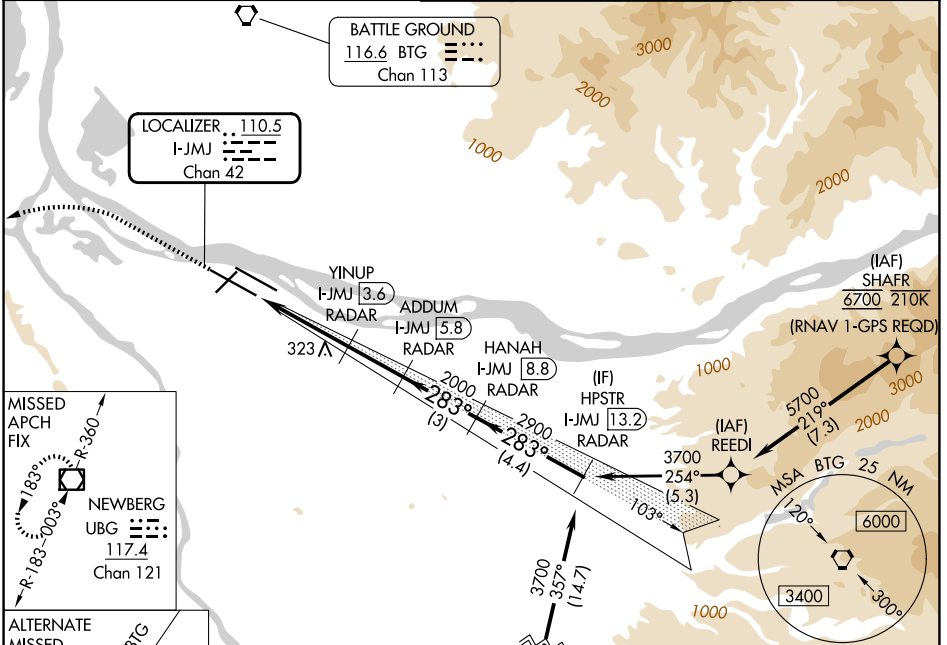
# ILS or LOC RWY 28L

PORTLAND INTL (PDX)

Simultaneous approach authorized. Autopilot coupled approach NA below 880. DME or RADAR required. For inop ALS, increase S-ILS 28L Cat E visibility to RVR 4500 and increase S-LOC 28L Cat E visibility to 1 1/2 SM.

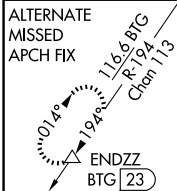
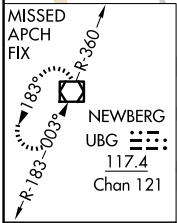
MALSR MISSED APPROACH: Climb to 2100 then climbing left turn to 4000 on UBG R-360 to UBG VOR/DME and hold.

D-ATIS <b>128.35 269.9</b>	PORTLAND APP CON <b>124.35 299.2</b>	PORTLAND TOWER <b>118.7 257.8 (10L-28R)</b> <b>123.775 251.125 (3-21, 10R-28L)</b>	GND CON <b>121.9 348.6</b>
-------------------------------	---	--	-------------------------------

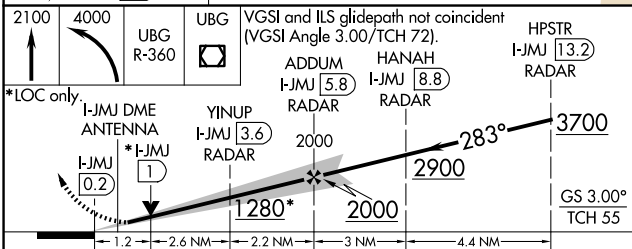


NW-1, 16 APR 2026 to 14 MAY 2026

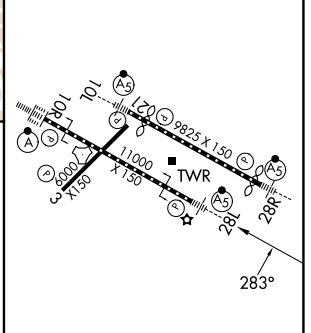
NW-1, 16 APR 2026 to 14 MAY 2026



Procedure NA for arrivals at MAVER on V448 southbound and on V165 eastbound.



ELEV 31	TDZE 23
---------	---------



REIL Rwy 3 and 21  
TDZL/RCLS Rwy 10R  
MIRL Rwy 3-21  
HIRL Rwy 10L-28R and 10R-28L

CATEGORY	A	B	C	D	E	
S-ILS 28L	306/24 283 (300-1/2)					
S-LOC 28L	480/24	457 (500-1/2)	480/45	457 (500-7/8)	FAF to MAP 6 NM	
CIRCLING	720-1 689 (700-1)	760-1 729 (800-1)	1060-3	1029 (1100-3)	1140-3 1109 (1200-3)	
	Knots	60	90	120	150	180
	Min:Sec	6:00	4:00	3:00	2:24	2:00