

(KRATR.KRATR3) 26078

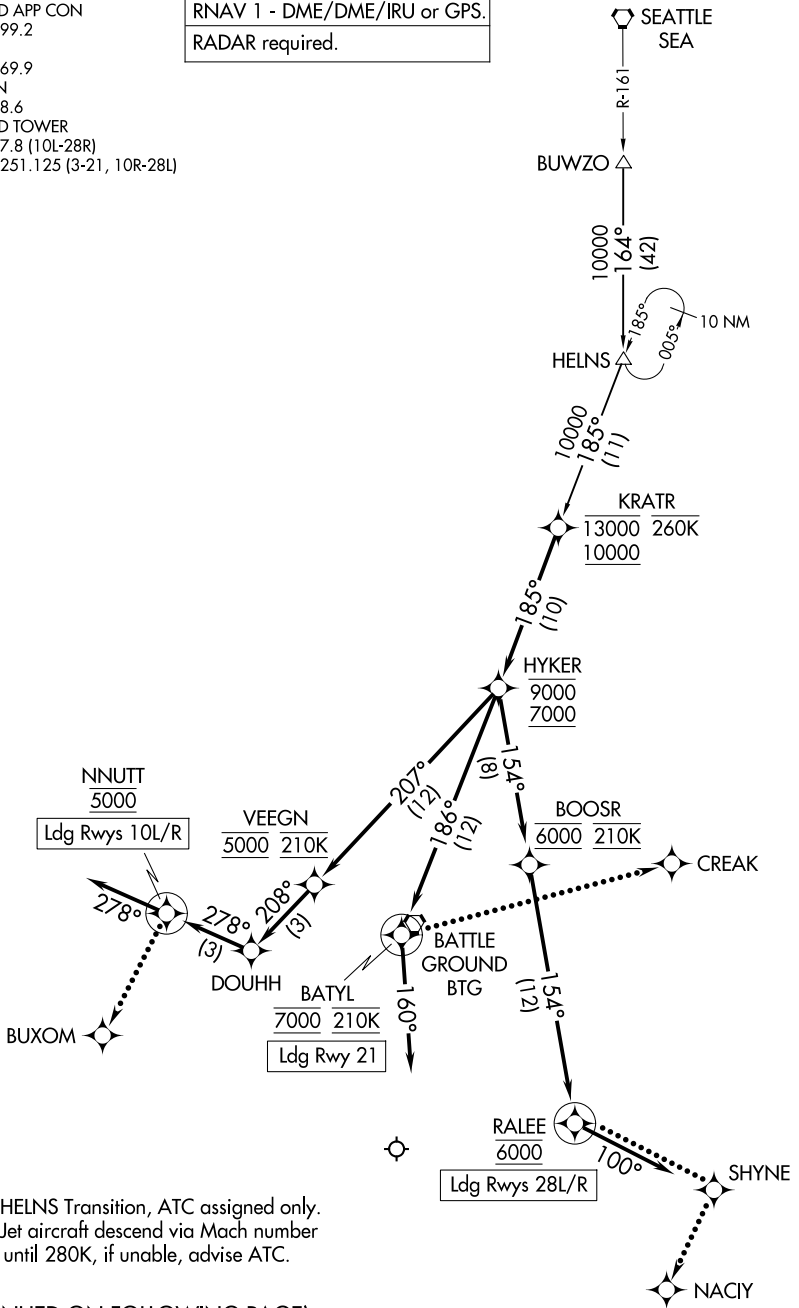
KRATR THREE ARRIVAL (RNAV)

AL-330 (FAA)

PORTLAND INTL (PDX)
PORTLAND, OREGON

PORTLAND APP CON
124.35 299.2
D-ATIS
128.35 269.9
GND CON
121.9 348.6
PORTLAND TOWER
118.7 257.8 (10L-28R)
123.775 251.125 (3-21, 10R-28L)

RNAV 1 - DME/DME/IRU or GPS.
RADAR required.



NOTE: HELNS Transition, ATC assigned only.
NOTE: Jet aircraft descend via Mach number until 280K, if unable, advise ATC.

(CONTINUED ON FOLLOWING PAGE)

NOTE: Chart not to scale.

NW-1, 16 APR 2026 to 14 MAY 2026

NW-1, 16 APR 2026 to 14 MAY 2026

KRATR THREE ARRIVAL (RNAV)
(KRATR.KRATR3) 19MAR26

PORTLAND, OREGON
PORTLAND INTL (PDX)

ARRIVAL ROUTE DESCRIPTION

BUWZO TRANSITION (BUWZO.KRATR3)

HELNS TRANSITION (HELNS.KRATR3)

From KRATR on track 185° to cross HYKER between 7000 and 9000.

LANDING RUNWAYS 10L/R: From HYKER on track 207° to cross VEEGN at 5000 and at 210K, then on track 208° to DOUHH, then on track 278° to cross NNUTT at 5000, then on track 278°. Expect RADAR vectors to final approach course.

LANDING RUNWAY 21: From HYKER on track 186° to cross BATYL at 7000 and at 210K, then on track 160°. Expect RADAR vectors to final approach course.

LANDING RUNWAYS 28L/R: From HYKER on track 154° to cross BOOSR at 6000 and at 210K, then on track 154° to cross RALEE at 6000, then on track 100°. Expect RADAR vectors to final approach course.

LOST COMMUNICATIONS

Follow published crossing altitudes and then maintain lowest Rwy transitional altitude until established on approach procedure.

RUNWAYS 10L/R: At NNUTT, turn left direct to BUXOM and proceed on ILS or LOC RWY 10L approach.

RUNWAY 21: At BATYL, turn left direct to CREAK and proceed on LOC/DME RWY 21 approach.

RUNWAYS 28L/R: At RALEE, turn left direct to SHYNE, then turn right direct to NACIY and proceed on ILS or LOC RWY 28R approach.

NW-1, 16 APR 2026 to 14 MAY 2026

NW-1, 16 APR 2026 to 14 MAY 2026