

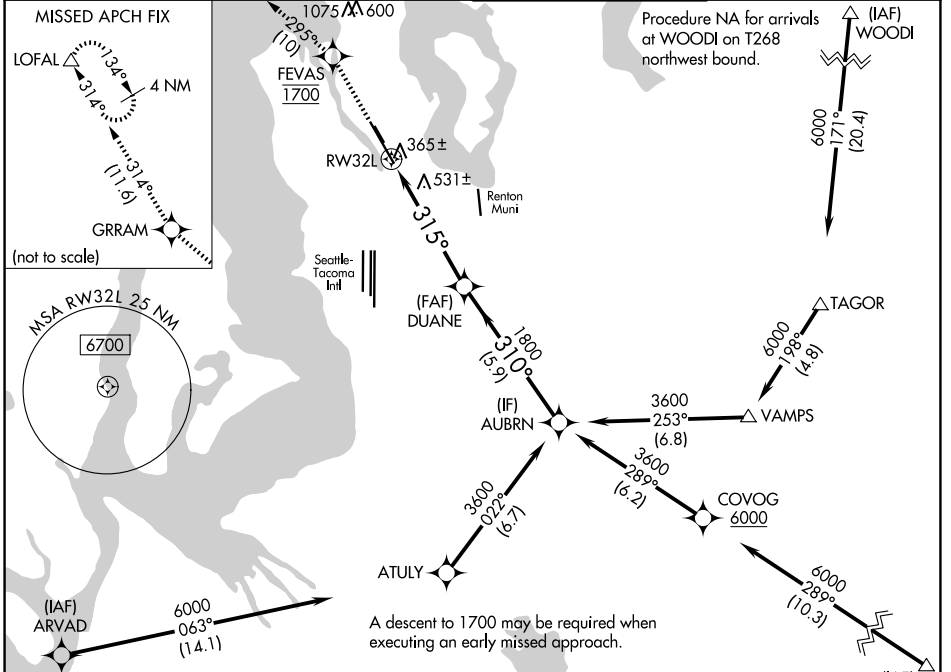
WAAS CH 89057 W32A	APP CRS 315°	Rwy Ldg TDZE Apt Elev	9120 22 22
--	------------------------	-----------------------------	---------------------------------------

RNAV (GPS) Y RWY 32L

BOEING FLD/KING COUNTY INTL (BFI)

RNP APCH - GPS.
 RADAR required for missed approach.
 MISSED APPROACH: Climb direct FEVAS, cross FEVAS at 1700, then climb to 3000 on the RNAV missed approach route to LOFAL and hold.

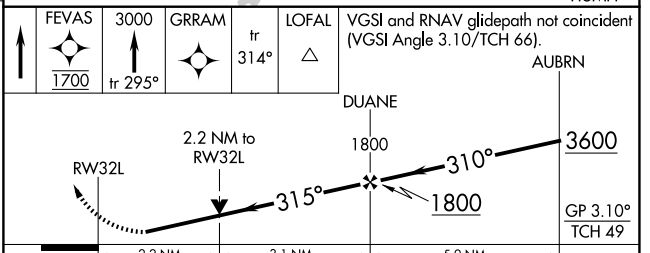
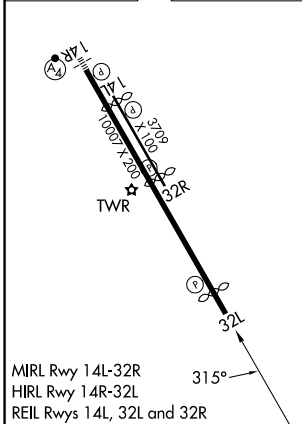
ATIS 127.75	SEATTLE APP CON 125.9 306.9	BOEING TOWER 120.6 257.8	GND CON 121.9
-----------------------	---------------------------------------	------------------------------------	-------------------------



NW-1, 16 APR 2026 to 14 MAY 2026

NW-1, 16 APR 2026 to 14 MAY 2026

ELEV 22	D	TDZE 22
---------	----------	---------



CATEGORY	A	B	C	D
LPV DA	478-1 ³ / ₈ 456 (500-1 ³ / ₈)			
LNAV/VNAV DA	884-2 ¹ / ₂ 862 (900-2 ¹ / ₂)			
LNAV MDA	800-1 778 (800-1)	800-1 ¹ / ₄ 778 (800-1 ¹ / ₄)	800-2 ¹ / ₂	778 (800-2 ¹ / ₂)