

LOC/DME I-YKM 110.1 Chan 38	APP CRS 094°	Rwy Ldg TDZE Apt Elev 1099	N/A N/A 1099
-------------------------------------------------	------------------------	--------------------------------------	---------------------------

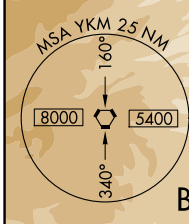
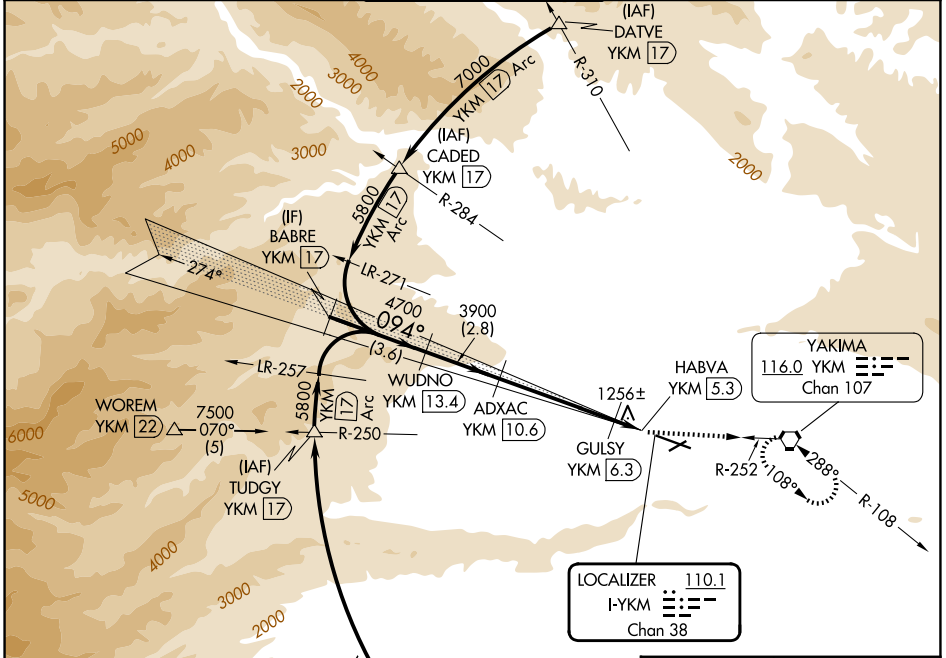
LOC/DME BC-B

YAKIMA AIR TRML/MCALLISTER FLD (YKM)

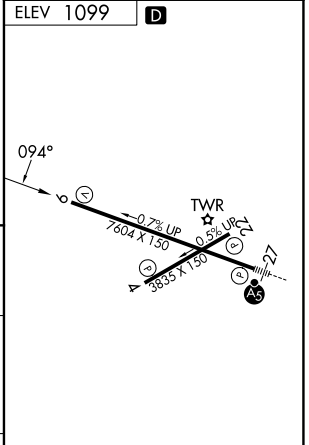
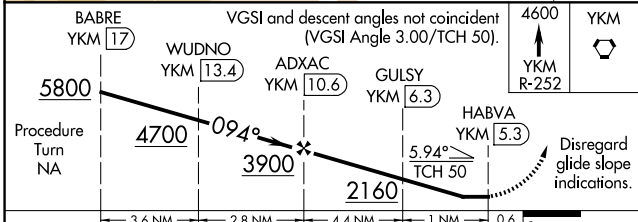
⚠ Simultaneous reception of I-YKM and YKM DME required.
⚠ Circling NA south of Rwy 9-27.
 When local altimeter setting not received, procedure NA.

MISSED APPROACH: Climb to 4600 via YKM VORTAC
 R-252 to YKM VORTAC and hold, continue climb-in-hold to 4600.

ATIS 125.25	SPOKANE APP CON* 123.8 263.15	YAKIMA TOWER* 133.25 (CTAF) 0 257.8	GND CON 121.9	UNICOM 122.95
-----------------------	-----------------------------------------	-----------------------------------------------	-------------------------	-------------------------



BACK COURSE



CATEGORY	A	B	C	D
CIRCLING	1760-1	661 (700-1)	1940-2½ 841 (900-2½)	2280-3 1181 (1200-3)

MIRL Rwy 4-22
 HIRL Rwy 9-27
 REIL Rws 4, 9, and 22

LOC/DME BC-B

NW-1, 16 APR 2026 to 14 MAY 2026

NW-1, 16 APR 2026 to 14 MAY 2026