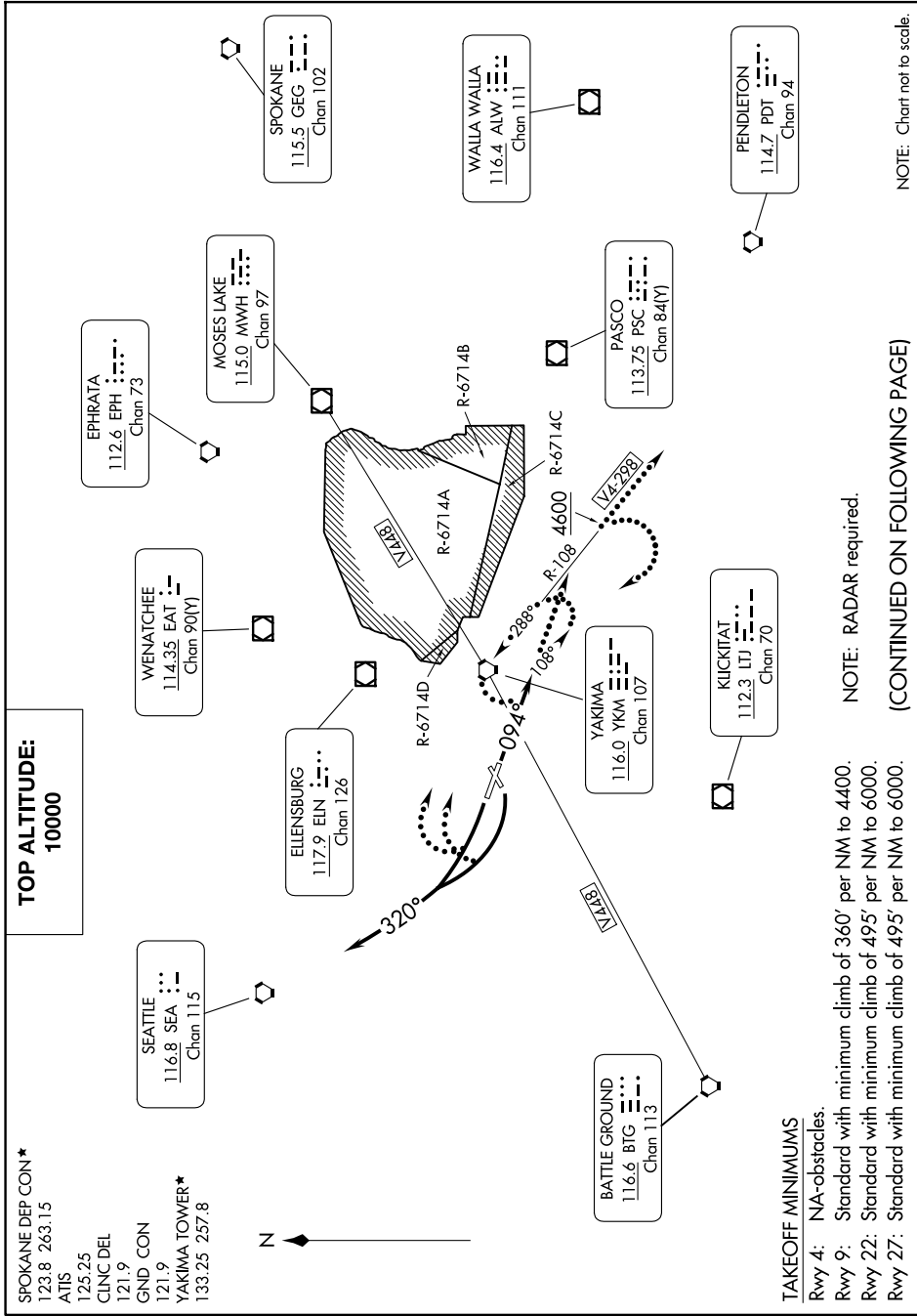


NACHES FOUR DEPARTURE

YAKIMA AIR TRML/MCALLISTER FLD (YKM)
AL-465 (FAA) YAKIMA, WASHINGTON

NW-1, 16 APR 2026 to 14 MAY 2026



SPOKANE DEP CON*
123.8 263.15
ATIS
125.25
CINC DEL
121.9
GND CON
121.9
YAKIMA TOWER*
133.25 257.8

NACHES FOUR DEPARTURE

10NOV16

TAKEOFF MINIMUMS
 Rwy 4: N/A-obstacles.
 Rwy 9: Standard with minimum climb of 360' per NM to 4400.
 Rwy 22: Standard with minimum climb of 495' per NM to 6000.
 Rwy 27: Standard with minimum climb of 495' per NM to 6000.

NOTE: RADAR required.

(CONTINUED ON FOLLOWING PAGE)

NOTE: Chart not to scale.

YAKIMA, WASHINGTON
YAKIMA AIR TRML/MCALLISTER FLD (YKM)

NW-1, 16 APR 2026 to 14 MAY 2026



DEPARTURE ROUTE DESCRIPTION

TAKEOFF RUNWAY 9: Climb heading 094° for vector to assigned route/fix. Thence
TAKEOFF RUNWAYS 22, 27: Climbing right turn heading 320° for vector to assigned route/fix. Thence

. . . . maintain 10000 or assigned lower altitude. Expect clearance to filed altitude 5 minutes after departure.

LOST COMMUNICATIONS

If no transmissions are received for one minute after departure:

RUNWAY 9: Climb heading 094° and outbound YKM VORTAC R-108.

RUNWAYS 22, 27: Climbing right turn direct YKM VORTAC and outbound YKM R-108, eastbound aircraft V4-V298 continue on course, all other departures continue climb on YKM R-108, until 4600, then climbing right turn direct YKM VORTAC and hold to cross YKM VORTAC at or above MEA or MCA for route of flight.

NW-1, 16 APR 2026 to 14 MAY 2026

NW-1, 16 APR 2026 to 14 MAY 2026