


APP CRS	Rwy Ldg	<b>7604</b>
<b>274°</b>	TDZE	<b>1068</b>
	Apt Elev	<b>1099</b>

# RNAV (RNP) Z RWY 27

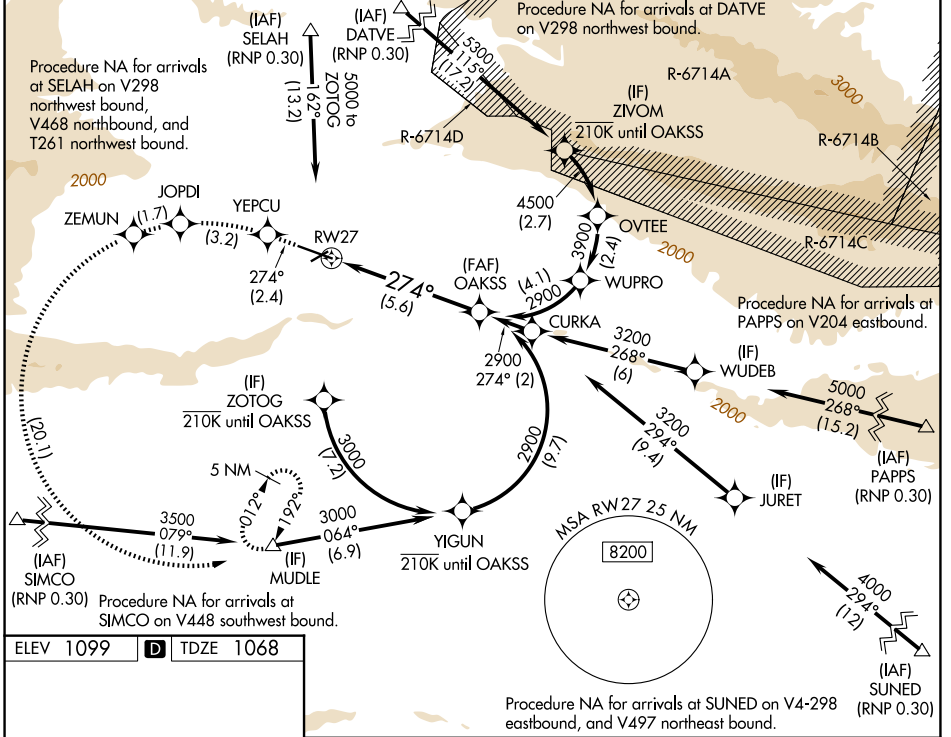
YAKIMA AIR TRML/MCALLISTER FLD (YKM)

▼ For uncompensated Baro-VNAV systems, procedure NA below -17°C (2°F) or above 54°C (130°F). RF required. GPS required. Missed approach requires RNP less than 1.0. For inop ALS increase \*RNP 0.10 DA visibility all Cts to RVR 4500 and RNP 0.30 DA visibility all Cts to 1/2 SM. DATVE transition NA when R-6714 A, C, D active.

MALSRS 

MISSED APPROACH: Climb to 5100 on track 274° to YEPCU left turn to JOPDI left turn to ZEMUN left turn to MUDLE and hold.  
\* Missed approach requires a minimum climb of 215 feet per NM to 4300.

ATIS	SPOKANE APP CON*	YAKIMA TOWER*	GND CON	UNICOM
<b>125.25</b>	<b>123.8 263.15</b>	<b>133.25 (CTAF) 0 257.8</b>	<b>121.9</b>	<b>122.95</b>



ELEV 1099	<b>D</b>	TDZE 1068
-----------	----------	-----------

MIRL Rwy 4-22  
HIRL Rwy 9-27 **D**  
REIL Rws 4, 9, and 22

5100	YEPCU	JOPDI	ZEMUN	MUDLE	OAKSS
↑	✧	↶	↶	△	△
tr 274°					2900
See planview for multiple IF locations.					
RWY 27 → 274° → 2900					
GP 3.00° TCH 57					
5.6 NM					
CATEGORY	A	B	C	D	
RNP 0.10 DA*		1348/24	280 (300-1/2)		
RNP 0.30 DA		1468/45	400 (400-7/8)		
<b>AUTHORIZATION REQUIRED</b>					

NW-1, 16 APR 2026 to 14 MAY 2026

NW-1, 16 APR 2026 to 14 MAY 2026