

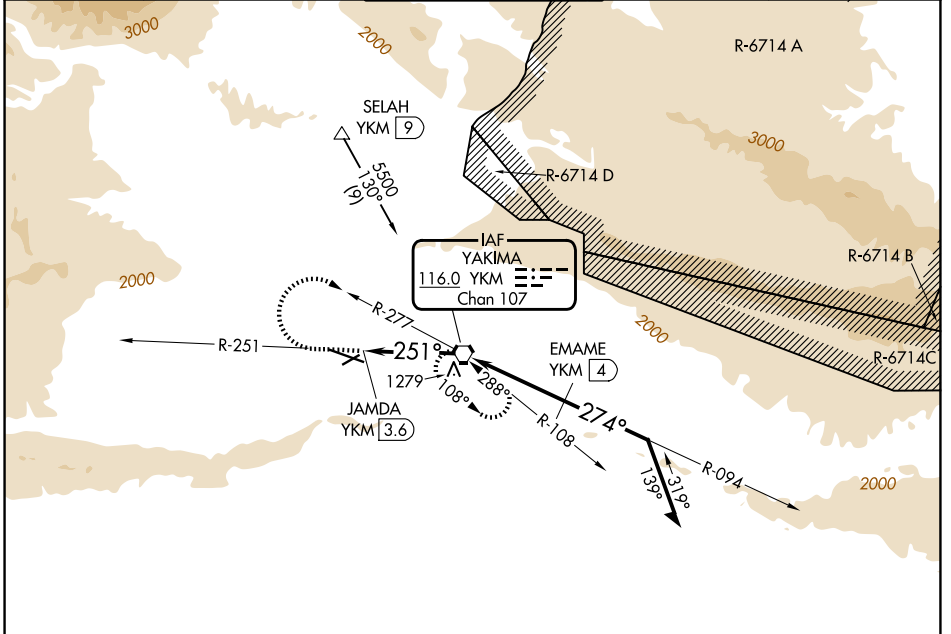
VORTAC YKM 116.0 Chan 107	APP CRS 251°	Rwy Ldg TDZE Apt Elev	N/A 1099
--	------------------------	-----------------------------	---------------------------

VOR-A

YAKIMA AIR TRML/MCALLISTER FLD (YKM)

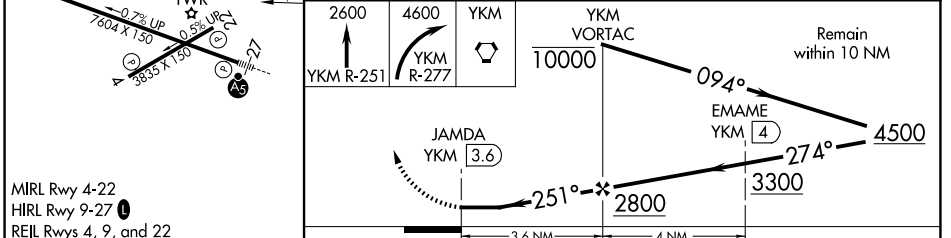
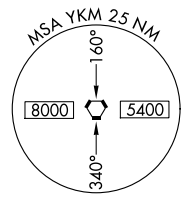
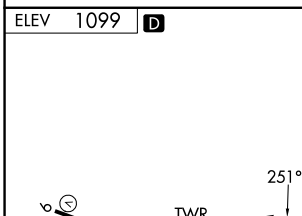
<p>▼ DME required. ▲ Circling not authorized south of Rwy 9-27. When local altimeter setting not received, procedure NA.</p>	<p>MISSED APPROACH: Climb to 2600 via YKM VORTAC R-251 then climbing right turn to 4600 via YKM VORTAC R-277 to YKM VORTAC and hold, continue climb-in-hold to 4600.</p>
--	--

ATIS 125.25	SPOKANE APP CON* 123.8 263.15	YAKIMA TOWER* 133.25 (CTAF) 257.8	GND CON 121.9	UNICOM 122.95
-----------------------	---	---	-------------------------	-------------------------



NW-1, 16 APR 2026 to 14 MAY 2026

NW-1, 16 APR 2026 to 14 MAY 2026



MIRL Rwy 4-22
HIRL Rwy 9-27
REIL Rwys 4, 9, and 22

FAF to MAP 3.6 NM					
Knots	60	90	120	150	180
Min:Sec	3:36	2:24	1:48	1:26	1:12

CATEGORY	A	B	C	D
CIRCLING	1840-1 741 (800-1)	1840-1¼ 741 (800-1¼)	1940-2½ 841 (900-2½)	2280-3 1181 (1200-3)