

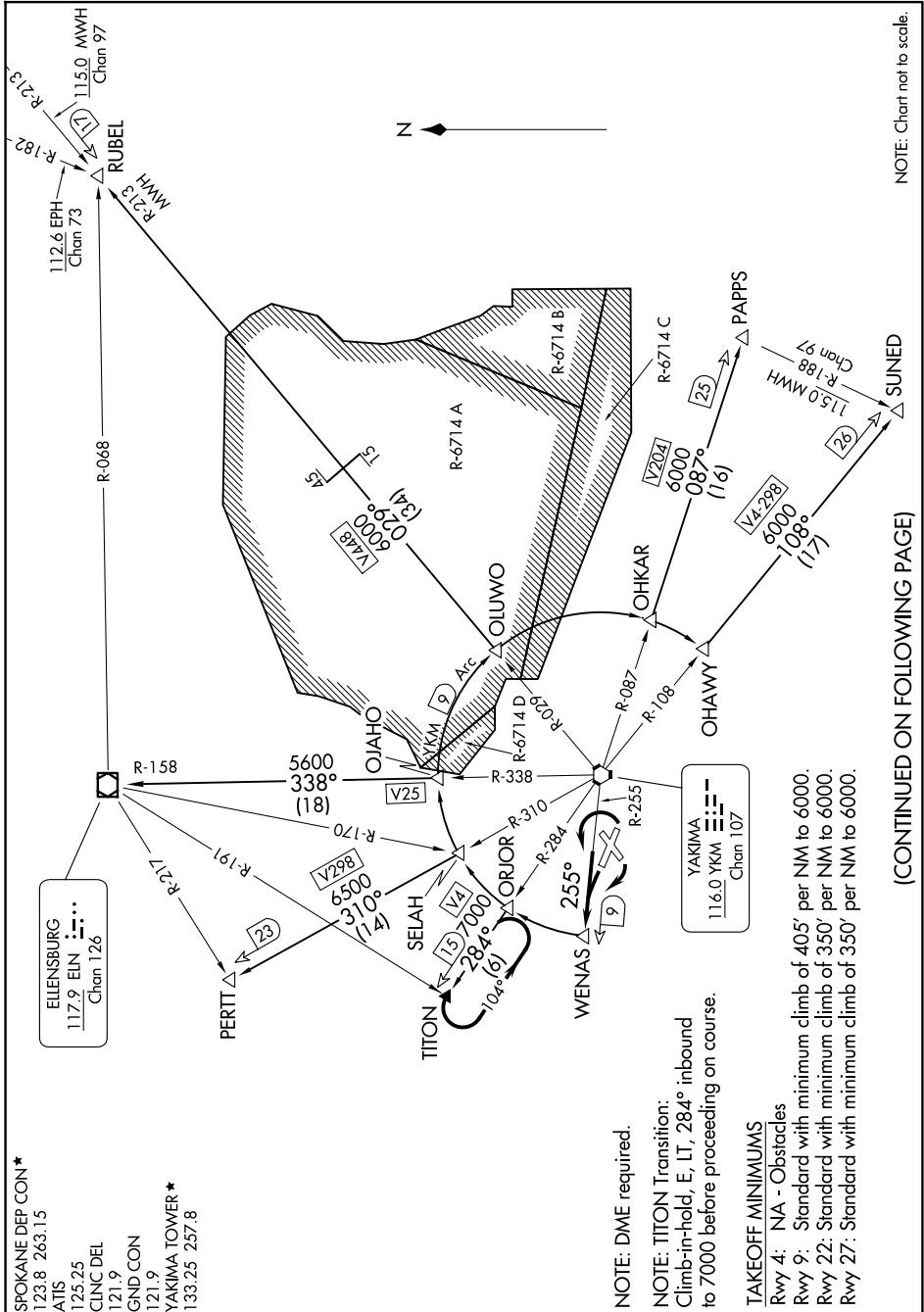
WENAS SEVEN DEPARTURE

AL-465 (FAA)

YAKIMA AIR TRML/MCALLISTER FLD (YKM)

YAKIMA, WASHINGTON

NW-1, 16 APR 2026 to 14 MAY 2026



(CONTINUED ON FOLLOWING PAGE)

NW-1, 16 APR 2026 to 14 MAY 2026

WENAS SEVEN DEPARTURE

YAKIMA, WASHINGTON

YAKIMA AIR TRML/MCALLISTER FLD (YKM)



DEPARTURE ROUTE DESCRIPTION

TAKEOFF RUNWAYS 9, 27: Climbing left turn thence. . . .

TAKEOFF RUNWAY 22 : Climbing right turn thence. . . .

. . . .intercept and proceed on YKM VORTAC R-255 to WENAS/YKM 9 DME, then on assigned transition.

ELLENSBURG TRANSITION (WENAS7.ELN): From over WENAS DME Fix on YKM 9 DME Arc to OJAHO DME fix and YKM VORTAC R-338 and ELN VOR/DME R-158 to ELN VOR/DME.

PAPPS TRANSITION (WENAS7.PAPPS): From over WENAS DME Fix on YKM 9 DME Arc to OHKAR DME fix and YKM VORTAC R-087 to PAPPS INT.

PERTT TRANSITION (WENAS7.PERTT): From over WENAS DME Fix on YKM 9 DME Arc to SELAH DME fix and YKM VORTAC R-310 to PERTT INT.

RUBEL TRANSITION (WENAS7.RUBEL): From over WENAS DME Fix on YKM 9 DME Arc to OLUWO DME fix and YKM VORTAC R-029 and MWH VOR/DME R-213 to RUBEL INT.

SUNED TRANSITION (WENAS7.SUNED): From over WENAS DME Fix on YKM 9 DME Arc to OHAWY DME fix and YKM VORTAC R-108 to SUNED INT.

TITON TRANSITION (WENAS7.TITON): From over WENAS DME Fix on YKM 9 DME Arc to ORJOR DME fix and YKM VORTAC R-284 to TITON INT.

NW-1, 16 APR 2026 to 14 MAY 2026

NW-1, 16 APR 2026 to 14 MAY 2026