

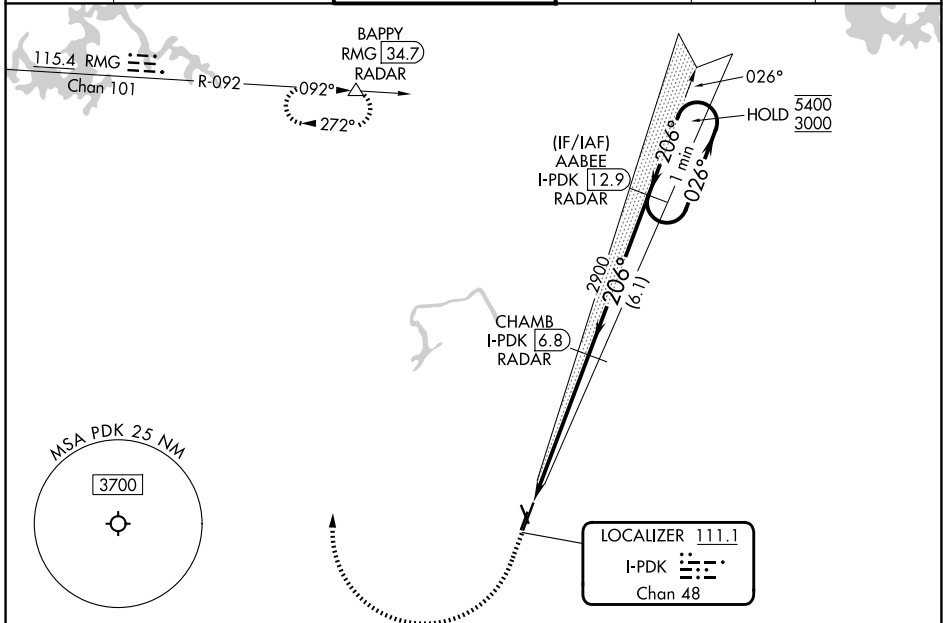
LOC/DME I-PDK 111.1 Chan 48	APP CRS 206°	Rwy Ldg TDZE 991 Apt Elev 998
--	------------------------	---

ILS or LOC RWY 21L

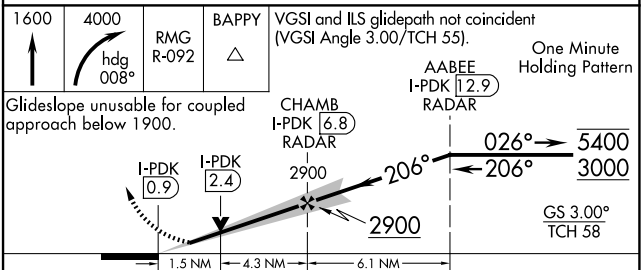
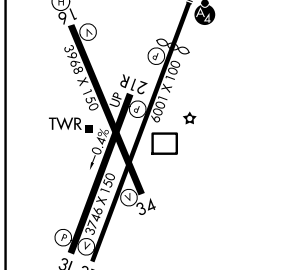
DEKALB-PEACHTREE (PDK)

RADAR required for procedure entry. DME or RADAR required.		MALSF 	MISSED APPROACH: Climb to 1600 then climbing right turn to 4000 on heading 008° and on RMG VORTAC R-092 to BAPPY/RMG 34.7 DME/RADAR and hold.
Circling Rwy 16, 34 NA at night. Rwy 21L helicopter visibility reduction below RVR 4000 NA.			

ATIS 128.4	ATLANTA APP CON 126.975 239.275	PEACHTREE TOWER ★ 120.9 (CTAF) 281.5	GND CON 121.6	UNICOM 122.95	120.0
----------------------	---	--	-------------------------	-------------------------	--------------



ELEV 998	D	TDZE 991
----------	----------	----------



FAF to MAP 5.8 NM		CATEGORY		A	B	C	D
Knots 60 90 120 150 180		S-ILS 21L		1330/40		339 (400-3/4)	
Min:Sec 5:48 3:52 2:54 2:19 1:56		S-LOC 21L		1520/40 529 (600-3/4)		1520-1 1/4 529 (600-1 1/4)	
		CIRCLING		1520-1 522 (600-1)		1840-2 1/2 2060-3 842 (900-2 1/2) 1062 (1100-3)	

SE-4, 16 APR 2026 to 14 MAY 2026

SE-4, 16 APR 2026 to 14 MAY 2026