

APP CRS	Rwy Ldg	5411
026°	TDZE	996
	Apt Elev	998

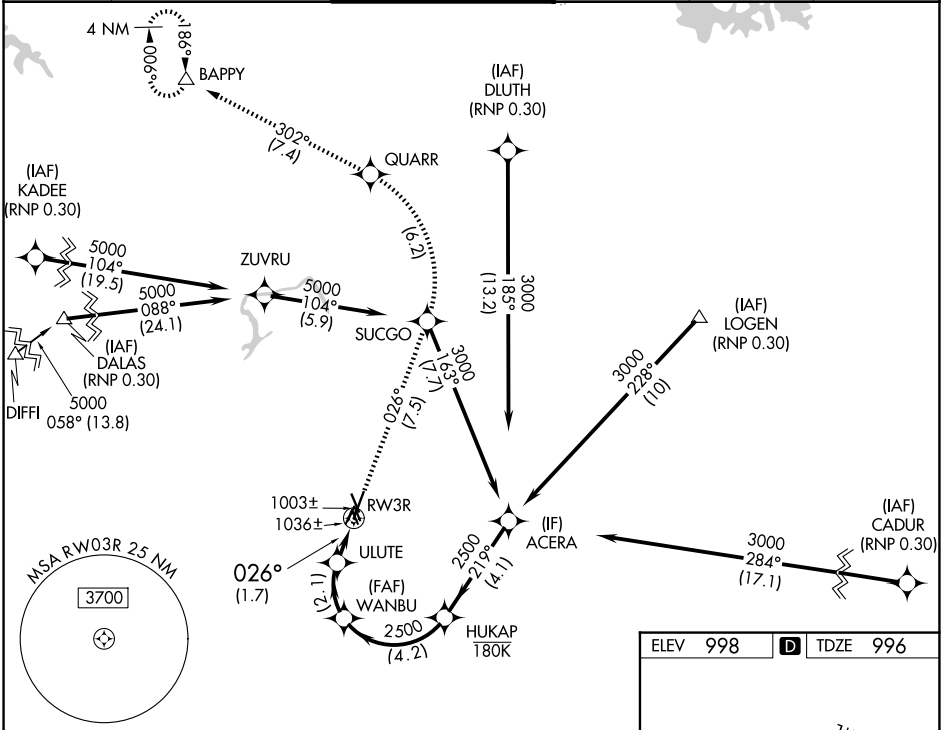
RNAV (RNP) RWY 3R

DEKALB-PEACHTREE (PDK)

V For uncompensated Baro-VNAV systems, procedure NA below 1°C (33°F) or above 45°C (114°F). RF required. GPS required.

MISSED APPROACH: Climb to 4000 on track 026° to SUCGO then left turn to QUARR then on track 302° to BAPPY and hold.

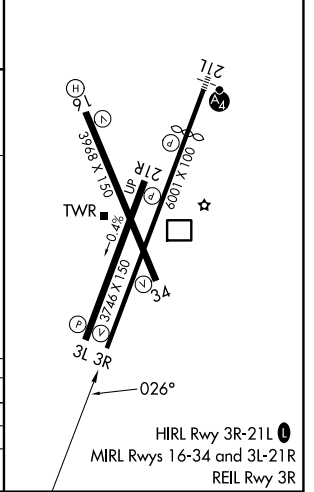
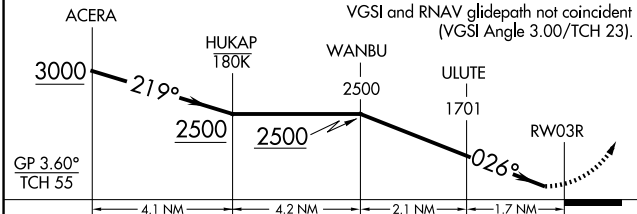
ATIS 128.4	ATLANTA APP CON 126.975 239.275	PEACHTREE TOWER ★ 120.9 (CTAF) 281.5	GND CON 121.6	UNICOM 122.95	120.0
----------------------	---	--	-------------------------	-------------------------	--------------



SE-4, 16 APR 2026 to 14 MAY 2026

SE-4, 16 APR 2026 to 14 MAY 2026

ELEV	998	D	TDZE	996
------	-----	----------	------	-----



CATEGORY	A	B	C	D
RNP 0.10 DA	1334-1	338 (400-1)		NA
RNP 0.30 DA	1441-1 3/8	445 (500-1 3/8)		NA

AUTHORIZATION REQUIRED