

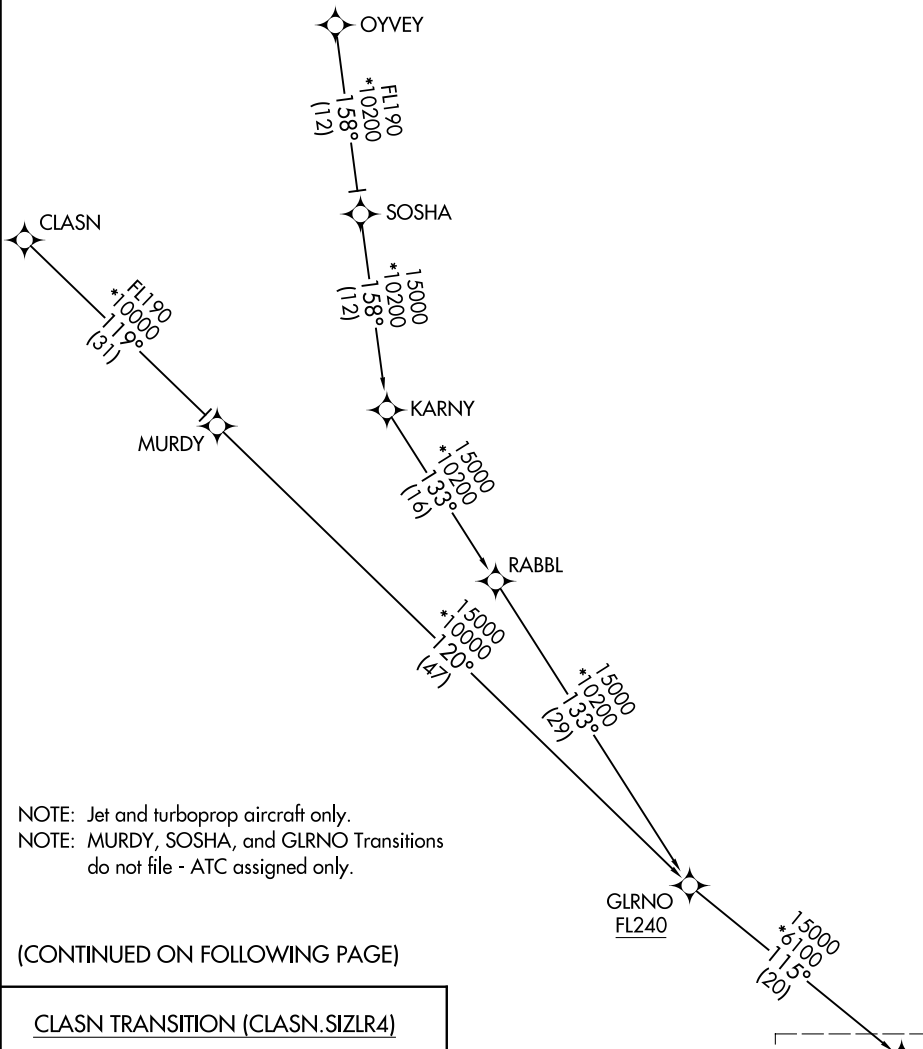
# SIZL FOUR ARRIVAL (RNAV) Transition Routes

PALM SPRINGS, CALIFORNIA

RNAV 1 - DME/DME/IRU or GPS.

RADAR required.

SOCAL APP CON  
 134.0 278.3  
 PSP ATIS  
 124.65  
 PALM SPRINGS TOWER\*  
 119.7 377.05

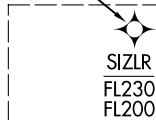


NOTE: Jet and turboprop aircraft only.  
 NOTE: MURDY, SOSHA, and GLRNO Transitions do not file - ATC assigned only.

(CONTINUED ON FOLLOWING PAGE)

- CLASN TRANSITION (CLASN.SIZL4)
- GLRNO TRANSITION (GLRNO.SIZL4)
- MURDY TRANSITION (MURDY.SIZL4)
- OYVEY TRANSITION (OYVEY.SIZL4)
- SOSHA TRANSITION (SOSHA.SIZL4)

NOTE: Chart not to scale.



SIZL  
 FL230  
 FL200

See following page for arrival routes

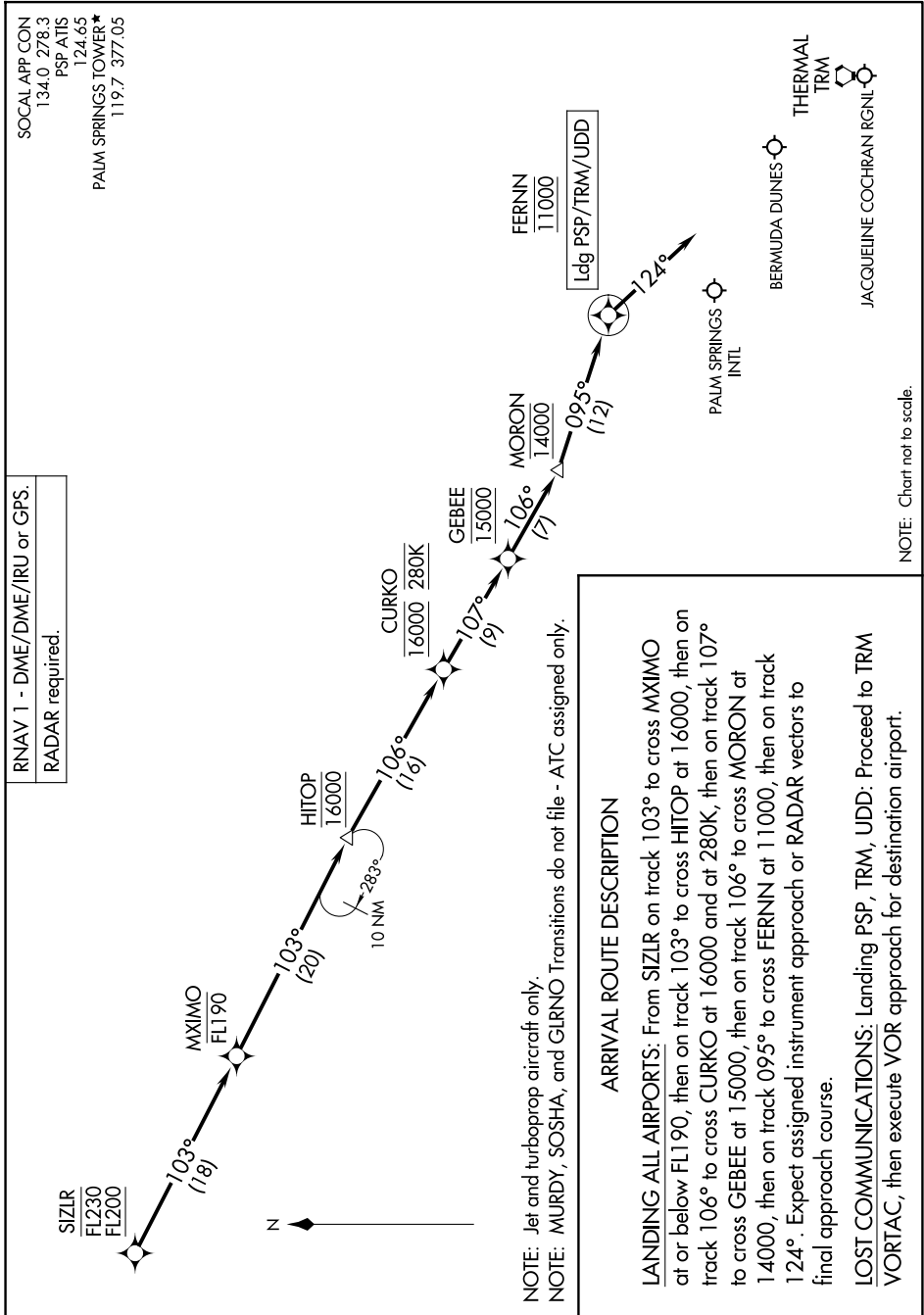
SW-3, 16 APR 2026 to 14 MAY 2026

SW-3, 16 APR 2026 to 14 MAY 2026

# SIZLR FOUR ARRIVAL (RNAV) Arrival Routes

PALM SPRINGS, CALIFORNIA

SW-3, 16 APR 2026 to 14 MAY 2026



# SIZLR FOUR ARRIVAL (RNAV) Arrival Routes

PALM SPRINGS, CALIFORNIA

SW-3, 16 APR 2026 to 14 MAY 2026