


# JAWBN SEVEN ARRIVAL

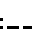
AL-582 (FAA)

SEATTLE, WASHINGTON

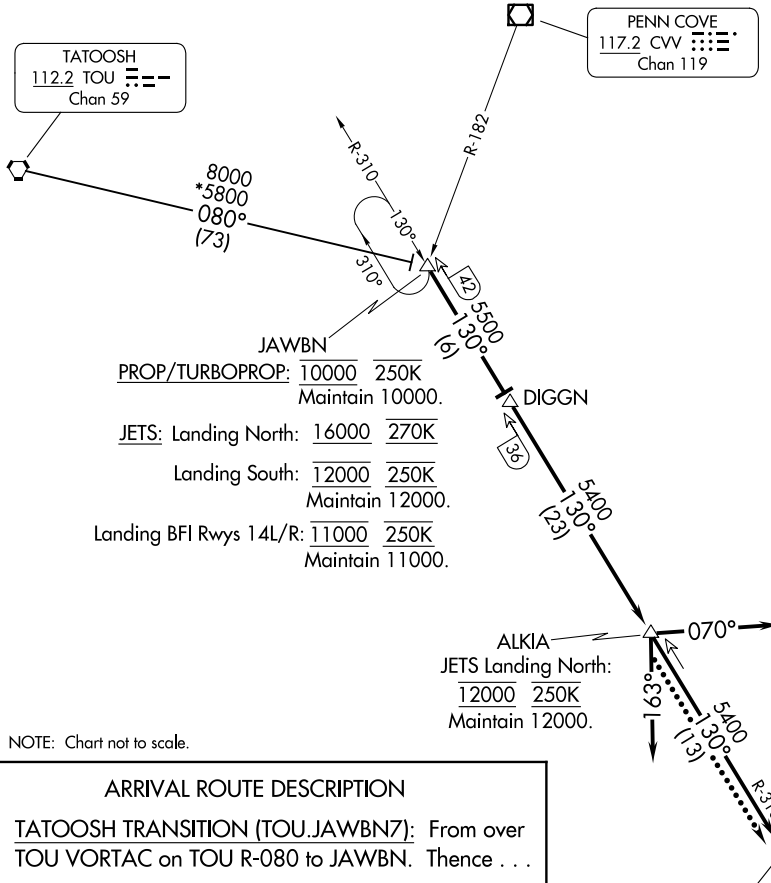
ROSLN 

RADAR and DME required.

SEATTLE APP CON  
125.6 273.45  
BFI ATIS  
127.75  
KTCM D-ATIS  
135.825 270.1  
SEA D-ATIS  
118.0

TATOOSH  
112.2 TOU   
Chan 59

PENN COVE  
117.2 CVV   
Chan 119



JAWBN

PROP/TURBOPROP: 10000 250K  
Maintain 10000.

JETS: Landing North: 16000 270K

Landing South: 12000 250K  
Maintain 12000.


Landing BFI Rwy 14L/R: 11000 250K  
Maintain 11000.

ALKIA

JETS Landing North:  
12000 250K  
Maintain 12000.

BOEING FLD/KING  
COUNTY INTL

SEATTLE-  
TACOMA INTL

SEATTLE  
116.8 SEA   
Chan 115

MCCHORD FLD  
 (JOINT BASE LEWIS-MCCHORD)

NOTE: Chart not to scale.

## ARRIVAL ROUTE DESCRIPTION

TATOOSH TRANSITION (TOU.JAWBN7): From over TOU VORTAC on TOU R-080 to JAWBN. Thence . . .  
. . . from over JAWBN on SEA R-310 to DIGGN then on SEA R-310 to ALKIA thence . . .

- LANDING SOUTH: depart ALKIA heading 070° for RADAR vectors to final approach course.
- LANDING NORTH: depart ALKIA heading 163° for RADAR vectors to final approach course.
- LANDING MCCHORD FLD: depart ALKIA proceed direct SEA VORTAC.
- LOST COMMUNICATIONS: After ALKIA, proceed direct SEA VORTAC.

# JAWBN SEVEN ARRIVAL

SEATTLE, WASHINGTON

NW-1, 16 APR 2026 to 14 MAY 2026

NW-1, 16 APR 2026 to 14 MAY 2026