

RNDRZ FOUR ARRIVAL (RNAV) Transition Routes

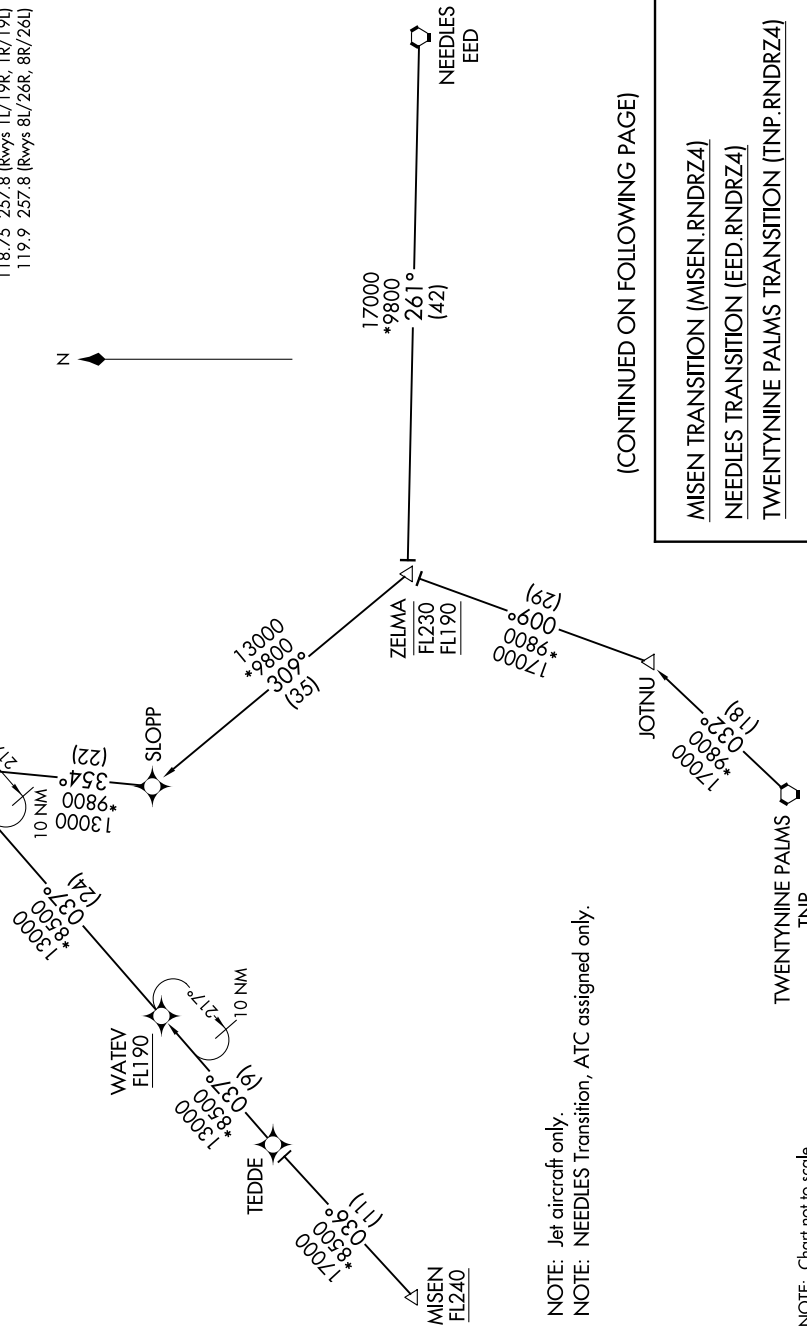
SW-4, 16 APR 2026 to 14 MAY 2026

RNAV 1 - DME/DME/IRU or GPS.
RADAR required.

See following page
for arrival routes

RNDRZ
16000 250K
13000

LAS VEGAS APP CON
125.025 379.15
D-ATIS
132.4
LAS VEGAS TOWER
118.75 257.8 (Rwys 1L/19R, 1R/19L)
119.9 257.8 (Rwys 8L/26R, 8R/26L)



(CONTINUED ON FOLLOWING PAGE)

MISEN TRANSITION (MISEN.RNDRZ4)
NEEDLES TRANSITION (EED.RNDRZ4)
TWENTYNINE PALMS TRANSITION (TNP.RNDRZ4)

NOTE: Jet aircraft only.
NOTE: NEEDLES Transition, ATC assigned only.

TWENTYNINE PALMS
TNP

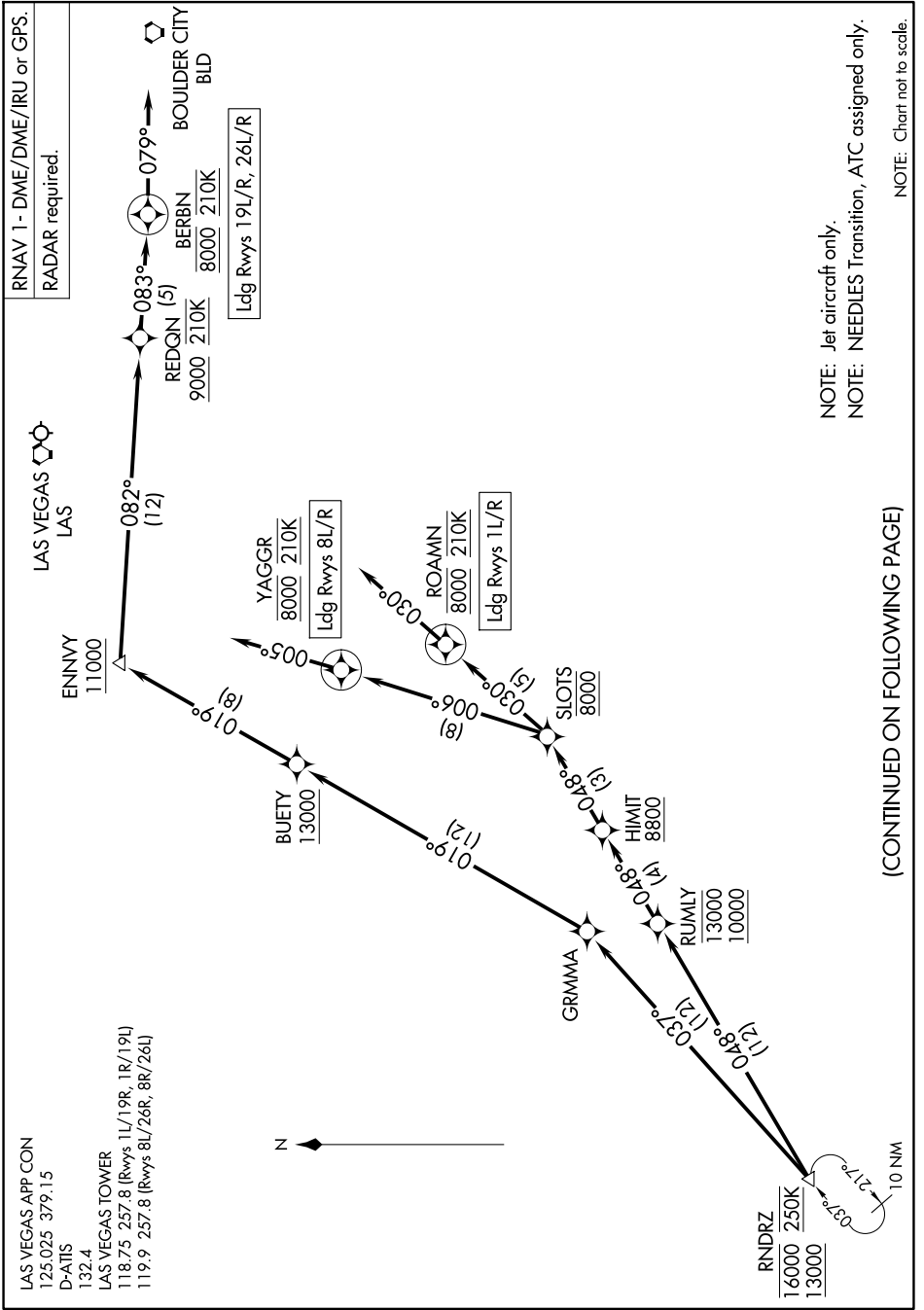
NOTE: Chart not to scale.

SW-4, 16 APR 2026 to 14 MAY 2026

RNDRZ FOUR ARRIVAL (RNAV) Transition Routes

RNDRZ FOUR ARRIVAL (RNAV) Arrival Routes

SW-4, 16 APR 2026 to 14 MAY 2026



(CONTINUED ON FOLLOWING PAGE)

NOTE: Jet aircraft only.
NOTE: NEEDLES Transition, ATC assigned only.

NOTE: Chart not to scale.

SW-4, 16 APR 2026 to 14 MAY 2026

RNDRZ FOUR ARRIVAL (RNAV) Arrival Routes

ARRIVAL ROUTE DESCRIPTION

LANDING RUNWAYS 1L/R: From RNRZ on track 048° to cross RUMLY between 10000 and 13000, then on track 048° to cross HIMIT at or above 8800, then on track 048° to cross SLOTS at 8000, then on track 030° to cross ROAMN at 8000 and at 210K, then on track 030°. Expect RADAR vectors to final approach course.

LANDING RUNWAYS 8L/R: From RNRZ on track 048° to cross RUMLY between 10000 and 13000, then on track 048° to cross HIMIT at or above 8800, then on track 048° to cross SLOTS at 8000, then on track 006° to cross YAGGR at 8000 and at 210K, then on track 005°. Expect RADAR vectors to final approach course.

LANDING RUNWAYS 19L/R, 26L/R: From RNRZ on track 037° to GRMMA, then on track 019° to cross BUETY at or above 13000, then on track 019° to cross ENNVY at or above 11000, then on track 082° to cross REDQN at or above 9000 and at 210K, then on track 083° to cross BERBN at 8000 and at 210K, then on track 079°. Expect RADAR vectors to final approach course.

LOST COMMUNICATIONS

LANDING RUNWAY 8R: At YAGGR proceed on the RNAV (RNP) RWY 8R approach, if unable, proceed visually to intercept the final approach course; if unable, maintain 8000 proceed direct LAS VORTAC then maintain 7000 proceed to BLD VORTAC and then on the ILS or LOC RWY 26L approach.

SW-4, 16 APR 2026 to 14 MAY 2026

SW-4, 16 APR 2026 to 14 MAY 2026