

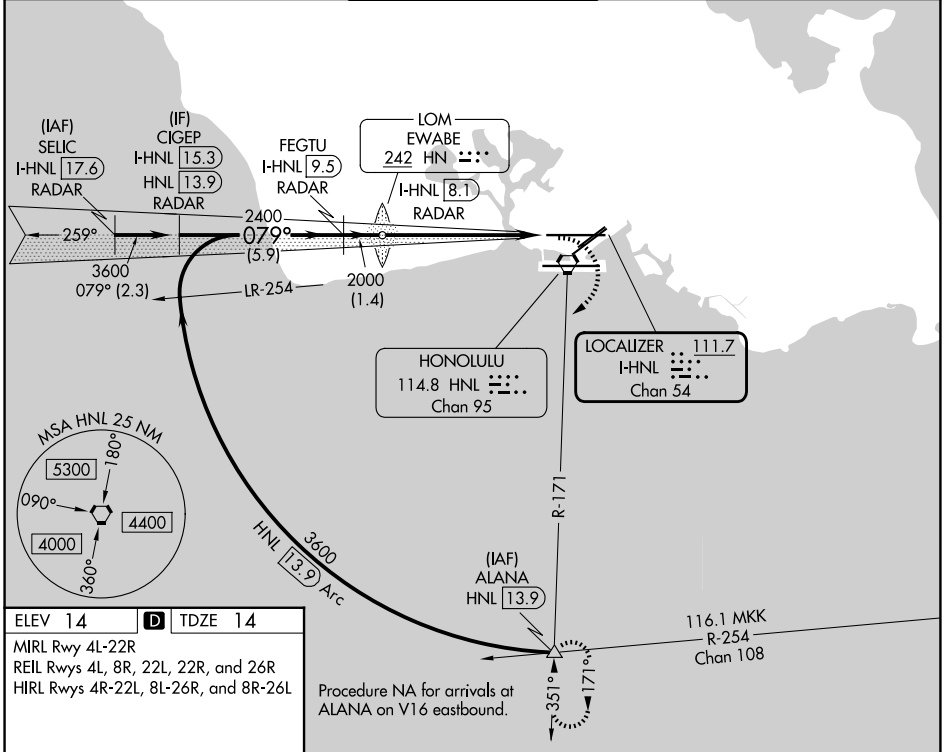
LOC/DME I-HNL 111.7 Chan 54	APP CRS 079°	Rwy Ldg 12245 TDZE 14 Apt Elev 14
--	------------------------	--

LOC RWY 8L

DANIEL K INOUEY INTL (HNL) (PHNL)

DME or RADAR required.	MALSR 	MISSED APPROACH: Climbing right turn to 5000 on heading 200° and HNL VORTAC R-171 to ALANA INT/HNL 13.9 DME and hold, continue climb-in-hold to 5000.
<p>⚠ Circling Rwy 22R NA at night. Circling NA for Cats A and B northwest of Rwys 8L and 22R and for Cats C and D north of Rwy 8L-26R. Circling NA to sea lanes 4W, 8W, 22W and 26W. For inop ALS, increase S-LOC 8L Cats C and D visibility to 1½ SM.</p>		

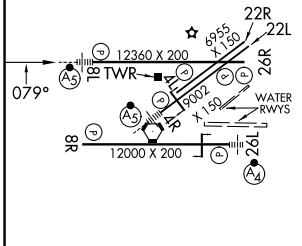
D-ATIS 127.9 251.15	HCF APPROACH 118.3 269.0	HONOLULU TOWER 118.1 257.8 123.9 273.575 (8R/26L)	GND CON 121.9 348.6	CLNC DEL 121.4 281.4
-------------------------------	------------------------------------	---	-------------------------------	--------------------------------



PAC, 19 MAR 2026 to 14 MAY 2026

PAC, 19 MAR 2026 to 14 MAY 2026

ELEV 14	D TDZE 14
MIRL Rwy 4L-22R REIL Rwys 4L, 8R, 22L, 22R, and 26R HIRL Rwys 4R-22L, 8L-26R, and 8R-26L	



CIGEP I-HNL 15.3 RADAR	VGSi and descent angles not coincident (VGSi Angle 3.00/TCH 73).		5000 hdg 200°	HNL R-171	ALANA
FEGTU I-HNL 9.5 RADAR	EWABE LOM I-HNL 8.1 RADAR	Use I-HNL DME when on the localizer course.			
3600	2400	2000	I-HNL 3.4 I-HNL 2.2		
5.9 NM		1.4 NM	4.7 NM	1.2 NM	

FAF to MAP 5.9 NM					
Knots	60	90	120	150	180
Min:Sec	5:54	3:56	2:57	2:22	1:58
CATEGORY	A	B	C	D	
S-8L	480-½	466 (500-½)	480-1	466 (500-1)	
CIRCLING	680-1	666 (700-1)	820-2¼ 806 (900-2¼)	1280-3 1266 (1300-3)	