

VITKO-THREE DEPARTURE (VITKO3.VITKO)

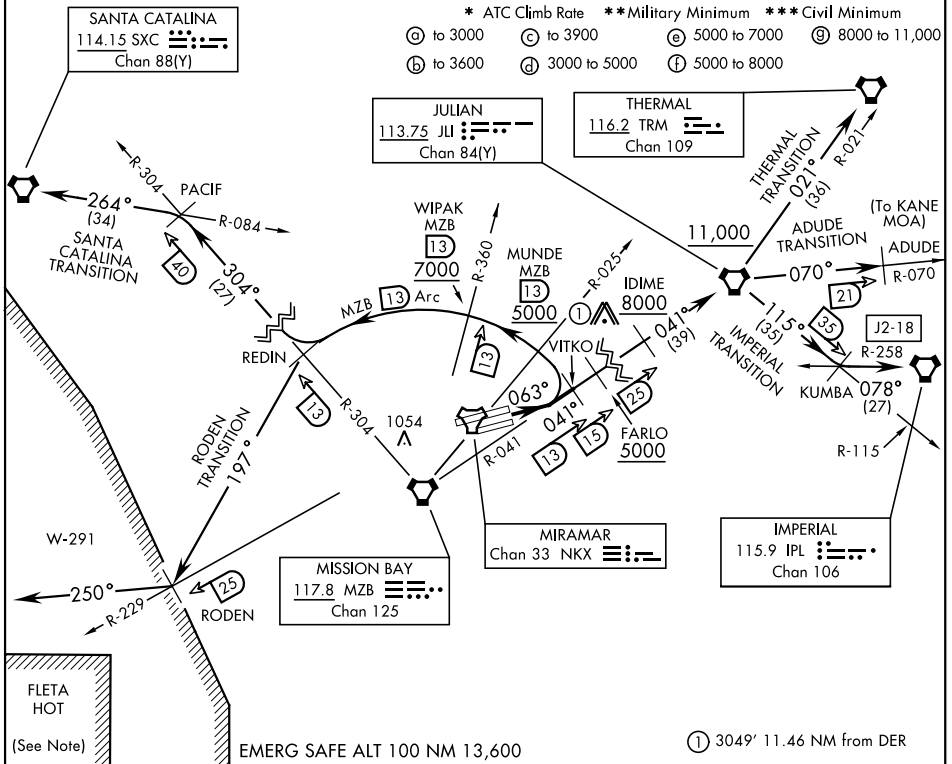
SAN DIEGO, CALIFORNIA

ATIS ★ 133.475 352.0 [USN]
 FOSS TOWER ★
 135.2 298.925
 SOCAL DEP CON
 132.2 269.1 E

Rwy	Knots	60	120	180	240	300	360
* 6L/R(ⓐ) V/V(fpm)	520	1040	1560	2080	2600	3120	
** 6L/R(ⓑ) V/V(fpm)	280	560	840	1120	1400	1680	
*** 6L/R(ⓒ) V/V(fpm)	300	600	900	1200	1500	1800	
* 6L/R(ⓓ) V/V(fpm)	680	1360	2040	2720	3400	4080	
* 6L/R(ⓔ) V/V(fpm)	353	706	1059	1412	1765	2118	
* 6L/R(ⓕ) V/V(fpm)	300	600	900	1200	1500	1800	
* 6L/R(ⓖ) V/V(fpm)	220	440	660	880	1100	1320	

* ATC Climb Rate **Military Minimum *** Civil Minimum

- ⓐ to 3000 ⓓ to 3900 ⓔ 5000 to 7000 ⓖ 8000 to 11,000
- ⓑ to 3600 ⓕ 3000 to 5000 ⓕ 5000 to 8000



SW-3, 16 APR 2026 to 14 MAY 2026

SW-3, 16 APR 2026 to 14 MAY 2026

DEPARTURE ROUTE DESCRIPTION

TAKEOFF RWY 6L/R: Climb via heading 063° to intercept and proceed via MZB VORTAC R-041 to VITKO. Join MZB R-041 at or above 3000. Thence...

ADUDE TRANSITION (VITKO3.ADUDE): ...Via MZB R-041 to JLI VORTAC. Then JLI R-070 to ADUDE. Cross FARLO at or above 5000. Cross IDIME at or above 8000. Cross JLI VORTAC at or above 11,000. (To operate in KANE MOA.)

IMPERIAL TRANSITION (VITKO3.IPL): ...Via MZB R-041 to JLI VORTAC. Then via JLI R-115 to KUMBA INT, then via IPL VORTAC R-258 to IPL. Cross FARLO at or above 5000. Cross IDIME at or above 8000. Cross JLI VORTAC at or above 11,000.

(CONTINUED ON FOLLOWING PAGE)

VITKO-THREE DEPARTURE (VITKO3.VITKO)

SAN DIEGO, CALIFORNIA

MIRAMAR MCAS (JOE FOSS FLD) (KNKX)

[USN]

DEPARTURE ROUTE DESCRIPTION

RODEN TRANSITION (VITKO3.RODEN): ...Arc N of MZB VORTAC via the 13 mile arc to REDIN. Then turn left heading 197° to intercept NKX R-229 at RODEN. Then turn right heading 250 ° for entry into W-291. Cross MUNDE at or above 5000. Cross WIPAK at or above 7000.

SANTA CATALINA TRANSITION (VITKO3.SXC): ...Arc N of MZB VORTAC via the 13 mile arc to REDIN. Then via MZB R-304 to PACIF INT. Then via SXC R-084 to SXC VORTAC. Cross MUNDE at or above 5000. Cross WIPAK at or above 7000.

THERMAL TRANSITION (VITKO3.TRM): ...Via MZB R-041 to JLI VORTAC. Then via JLI R-021 to TRM VORTAC. Cross FARLO at or above 5000. Cross IDIME at or above 8000. Cross JLI VORTAC at or above 11,000.

NOTE:

- (1) FLETA HOT-ACTIVE FIRING AREA (DANGER, REMAIN CLEAR).
- (2) ALL AIRCRAFT SHOULD MAINTAIN LAST ASSIGNED HEADING/RADIAL AND ALTITUDE TO AVOID INBOUND MILITARY OR CIVIL AIRCRAFT AT HIGHER ALTITUDES!

SW-3, 16 APR 2026 to 14 MAY 2026

SW-3, 16 APR 2026 to 14 MAY 2026