

25275

POINT MUGU NAS (NAVAL BASE VENTURA CO) (KNTD)

DOYLE-NINE DEPARTURE (DOYLE 9.DOYLE) [USN]

OXNARD, CALIFORNIA

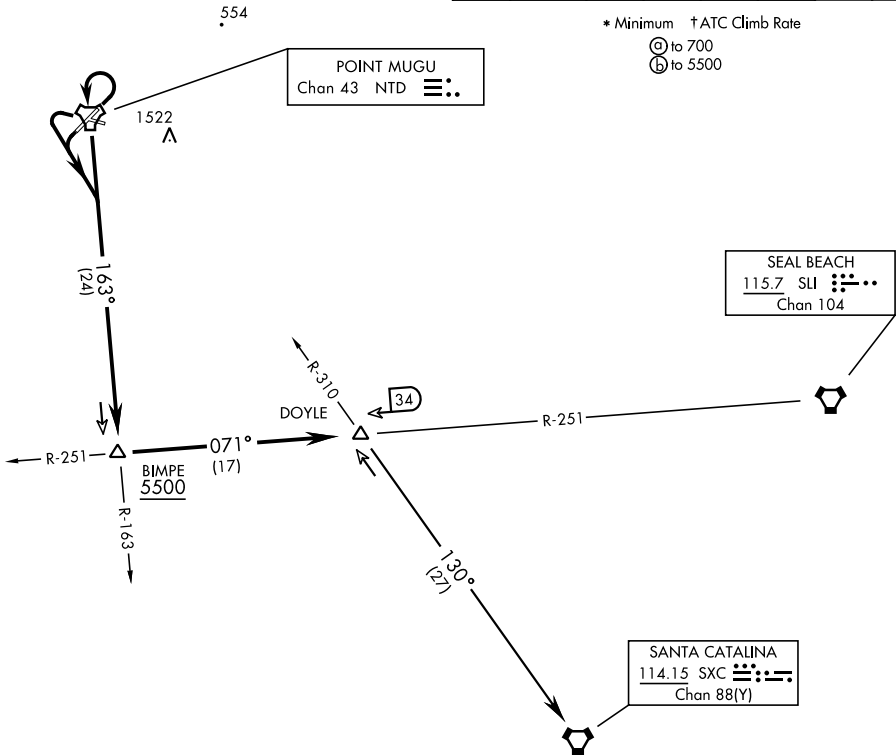
ATIS ★ 125.55 363.05
 TOWER ★
 124.85 290.375
 DEP CON ★
 128.65 307.275

TACAN required

| Rwy | Knots | 60 | 120 | 180 | 240 | 300 | 360 |
|---------|----------|-----|-----|-----|-----|------|------|
| *03 (A) | V/V(fpm) | 205 | 410 | 615 | 820 | 1025 | 1230 |
| †03 (B) | V/V(fpm) | 215 | 430 | 645 | 860 | 1075 | 1290 |
| †21 (B) | V/V(fpm) | 232 | 464 | 696 | 928 | 1160 | 1392 |
| †27 (B) | V/V(fpm) | 212 | 424 | 636 | 848 | 1060 | 1272 |

* Minimum † ATC Climb Rate

(A) to 700
 (B) to 5500



SW-3, 16 APR 2026 to 14 MAY 2026

SW-3, 16 APR 2026 to 14 MAY 2026

DEPARTURE ROUTE DESCRIPTION

TAKEOFF RWY 3: Climbing left turn within 3 DME of NTD TACAN, direct NTD, thence...

TAKEOFF RWY 21, 27: Left turn, thence...

...intercept NTD R-163 and via NTD R-163 to BIMPE (NTD R-163/24 DME), then via SLI VORTAC R-251 to DOYLE, then via assigned routing. Cross BIMPE at or above 5500.

SANTA CATALINA TRANSITION (DOYLE 9.SXC): DOYLE (SLI R-251/34 DME) to SANTA CATALINA VORTAC via SXC R-310. Then as filed.

DOYLE-NINE DEPARTURE (DOYLE 9.DOYLE)

OXNARD, CALIFORNIA
POINT MUGU NAS (NAVAL BASE VENTURA CO) (KNTD)