

OXNARD, CALIFORNIA

# RNAV (GPS) RWY 21

(USN)

POINT MUGU NAS (NAVAL BASE VENTURA CO) (KNTD)

WAAS CH <b>95170</b> W21A	APCH CRS <b>212°</b>	Rwy ldg TDZE Arprt Elev	<b>11,102</b> <b>13</b> <b>13</b>
---------------------------------	-------------------------	-------------------------------	---

RNP APCH



MISSED APPROACH: Climb to 2600 direct HALTU and hold.

- ▼ \* When ALS inop, increase vis to 3/4 mile.
- \*\* When ALS inop, increase vis to 1 mile.
- \*\*\* When ALS inop, increase CAT AB vis to 1 mile; CAT CD vis to 1 1/8 miles.

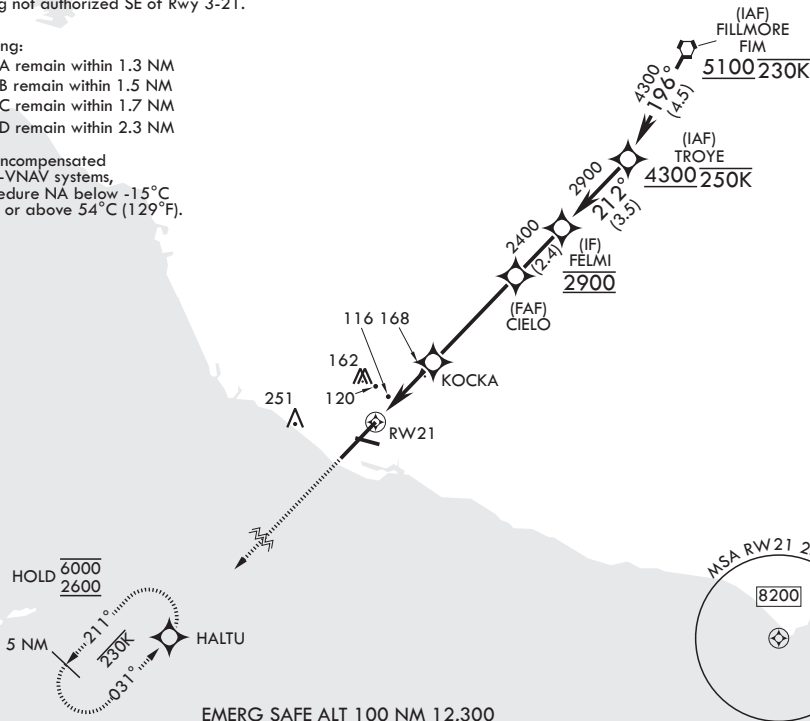
ATIS* <b>125.55 363.05</b>	APP CON/DEP CON* <b>128.65 307.275</b>	TOWER* <b>124.85 290.375</b>	GND CON <b>121.6 360.2</b>	ASR/PAR
-------------------------------	---	---------------------------------	-------------------------------	---------

† Circling not authorized SE of Rwy 3-21.

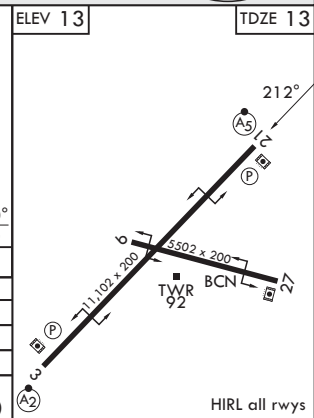
Circling:

- CAT A remain within 1.3 NM
- CAT B remain within 1.5 NM
- CAT C remain within 1.7 NM
- CAT D remain within 2.3 NM

For uncompensated Baro-VNAV systems, procedure NA below -15°C (5°F) or above 54°C (129°F).



2600 HALTU	ELEV 13				TDZE 13
	FELMI 2900				
	KOCKA 1020				
	CIELO 2400				
	RWY 21 251				
	GP 3.00° TCH 46				
CATEGORY	A	B	C	D	
LPV DA*	213-½	200	(200-½)		
LNAV/VNAV DA**	391-⅝	378	(400-⅝)		
LNAV MDA***	420-½	407 (500-½)	420-¾	407 (500-¾)	
CIRCLING†	420-1 407 (500-1)	520-1 507 (600-1)	520-1½ 507 (600-1½)	580-2 567 (600-2)	



OXNARD, CALIFORNIA

34°07'N - 119°07'W POINT MUGU NAS (NAVAL BASE VENTURA CO) (KNTD)

Amdt 9 27NOV25

# RNAV (GPS) RWY 21

SW-3, 16 APR 2026 to 14 MAY 2026

SW-3, 16 APR 2026 to 14 MAY 2026