


LOC I-LMJ <b>110.7</b>	APP CRS <b>218°</b>	Rwy Idg <b>11001</b> TDZE <b>964</b> Apt Elev <b>964</b>
---------------------------	------------------------	--

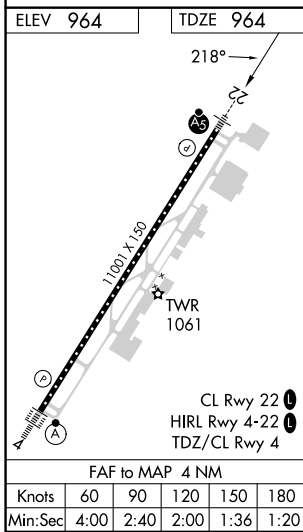
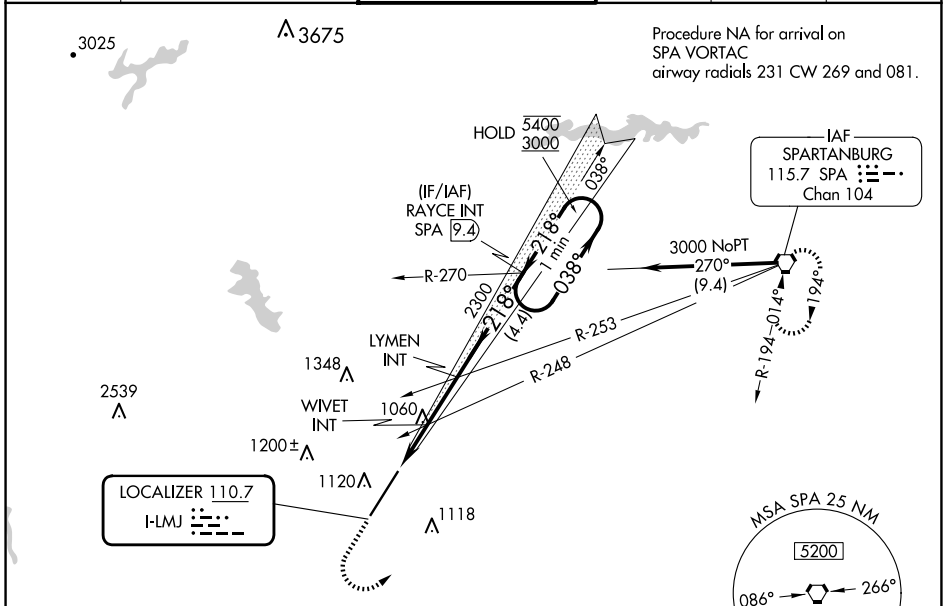
# ILS or LOC RWY 22




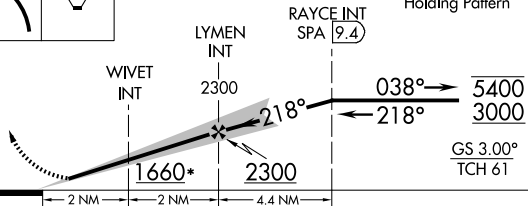
GREENVILLE SPARTANBURG INTL (GSP)

**⚠** When local altimeter setting not received, use Greenville Downtown altimeter setting: increase DA to 1193; increase all MDAs 40 feet and visibility S-LOC 22 Cats C and D to RVR 3500 and Circling Cat D ¼ SM. For inop ALS, increase S-LOC 22 Cat C/D visibility to RVR 5500.

**MALSR**  MISSED APPROACH: Climb to 2000 then climbing left turn to 3000 direct SPA VORTAC and hold.

ATIS <b>134.25</b>	GREER APP CON★ <b>118.8 270.275</b>	GREER TOWER★ <b>120.1</b> (CTAF) <b>251.15</b>	GND CON <b>121.9</b>	CLNC DEL <b>121.9</b>	UNICOM <b>122.95</b>
-----------------------	--	---	-------------------------	--------------------------	-------------------------



2000	3000	SPA	VGSI and ILS glidepath not coincident (VGSI Angle 3.00/TCH 76).	One Minute Holding Pattern
				
*LOC only.				
				
LYMEN INT	RAYCE INT SPA 9.4			
WIVET INT	2300	038°	5400	3000
	1660*	218°	GS 3.00° TCH 61	
		← 218°		
		← 2 NM	← 2 NM	← 4.4 NM
CATEGORY	A	B	C	D
S-ILS 22	1164/24		200 (200-½)	
S-LOC 22	1320/24	356 (400-½)	1320/30	356 (400-¾)
<input checked="" type="checkbox"/> CIRCLING	1440-1	476 (500-1)	1480-1½ 516 (600-1½)	1700-2¼ 736 (800-2¼)

SE-2, 16 APR 2026 to 14 MAY 2026

SE-2, 16 APR 2026 to 14 MAY 2026