

LOC/DME I-GSP 109.3 Chan 30	APP CRS 038°	Rwy ldg 11001 TDZE 947 Apt Elev 964
-------------------------------------------------	------------------------	----------------------------------------------------------------

ILS or LOC RWY 4

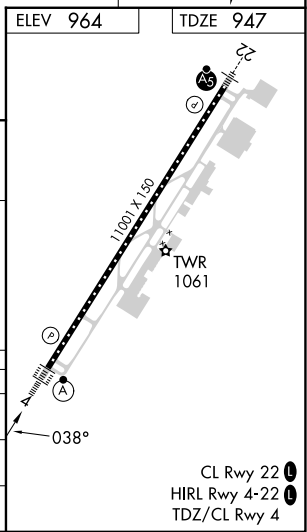
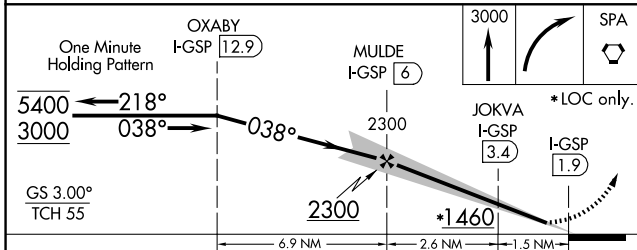
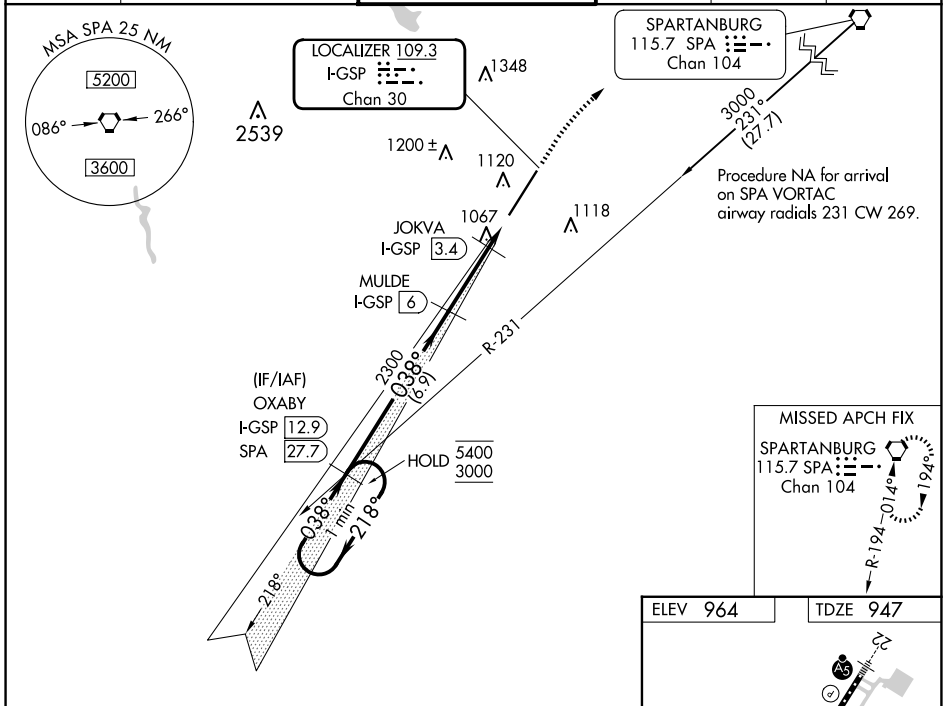
GREENVILLE SPARTANBURG INTL (GSP)

DME required.

ALS-2 MISSED APPROACH: Climb to 3000 then right turn direct SPA VORTAC and hold.

For inop ALS, increase S-LOC 4 Cats C and D visibility to RVR 5500. When local altimeter setting not received, use Greenville Downtown altimeter setting: increase DA to 1176 feet; increase all MDAs 40 feet and visibility S-LOC 4 Cat C/D to RVR 4000 and Circling Cat D ¼ SM. For inop ALS, when using Greenville Downtown altimeter setting, increase S-LOC 4 Cats C/D visibility to RVR 6000.

ATIS 134.25	GREER APP CON* 118.8 270.275	GREER TOWER* 120.1 (CTAF) 251.15	GND CON 121.9	CLNC DEL 121.9	UNICOM 122.95
-----------------------	----------------------------------------	--------------------------------------------	-------------------------	--------------------------	-------------------------



CATEGORY	A	B	C	D
S-ILS 4	1147/18 200 (200-½)			
S-LOC 4	1320/24	373 (400-½)	1320/35	373 (400-¾)
C CIRCLING	1440-1	476 (500-1)	1480-1½ 516 (600-1½)	1700-2¼ 736 (800-2¼)

SE-2, 16 APR 2026 to 14 MAY 2026

SE-2, 16 APR 2026 to 14 MAY 2026