

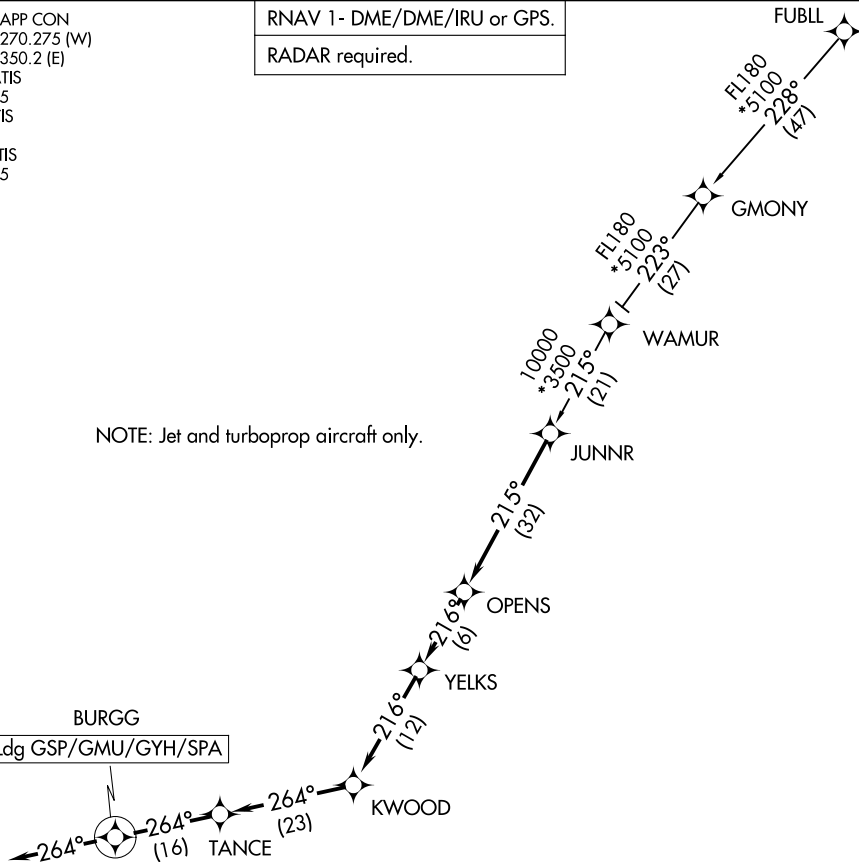
JUNNR FOUR ARRIVAL (RNAV)

GREER, SOUTH CAROLINA

GREER APP CON
 118.8 270.275 (W)
 119.4 350.2 (E)
 GMU ATIS
 127.075
 GSP ATIS
 134.25
 GYH ATIS
 127.325

RNAV 1 - DME/DME/IRU or GPS.
RADAR required.

NOTE: Jet and turboprop aircraft only.



NOTE: Chart not to scale.

ARRIVAL ROUTE DESCRIPTION

FUBLL TRANSITION (FUBLL.JUNNR4)

LANDING ALL AIRPORTS: From JUNNR on track 215° to OPENS, then on track 216° to YELKS, then on track 216° to KWOOD, then on track 264° to TANCE, then on track 264° to BURGG, then on heading 264°. Expect RADAR vectors to final approach course.

JUNNR FOUR ARRIVAL (RNAV)

GREER, SOUTH CAROLINA