

WAAS CH 99602 W22A	APP CRS 218°	Rwy Idg 11001 TDZE 964 Apt Elev 964
--	------------------------	--

RNAV (GPS) RWY 22

GREENVILLE SPARTANBURG INTL (GSP)

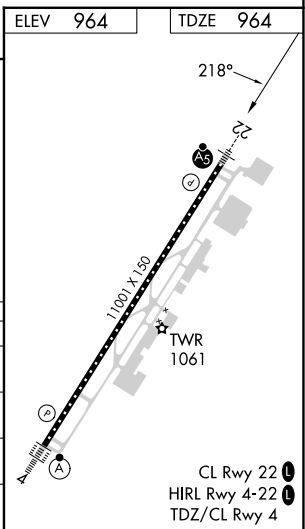
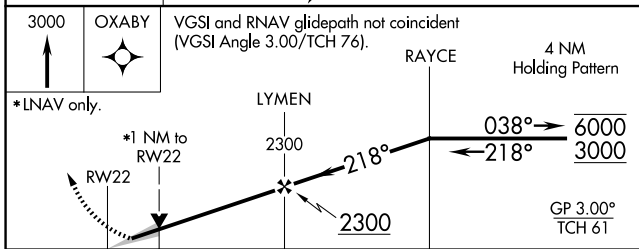
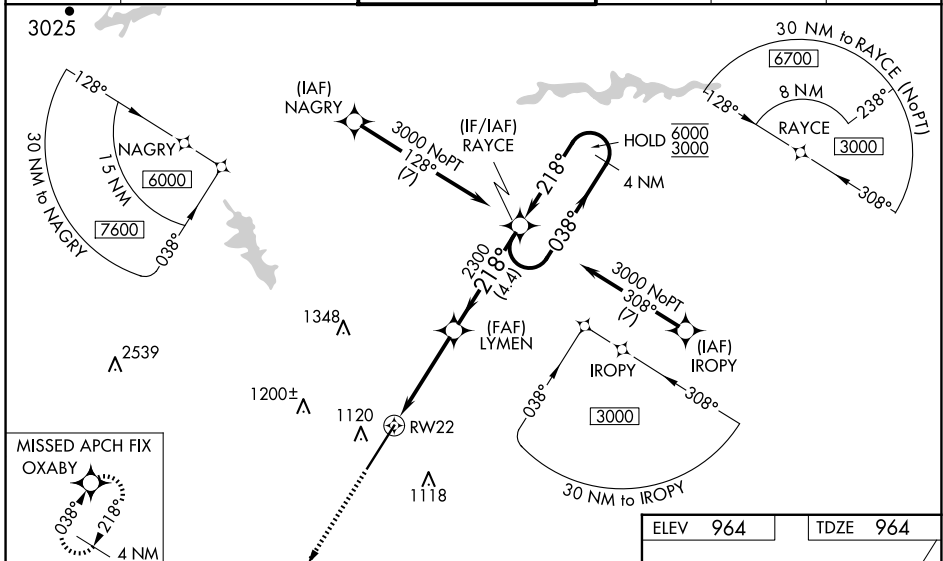
RNP APCH.

For uncompensated Baro-VNAV systems, LNAV/VNAV NA below -10°C or above 54°C. For inop ALS, increase LNAV/VNAV all Cats visibility to RVR 4500. When local altimeter setting not received, use Greenville downtown altimeter setting; increase LPV DA to 1193 feet; increase LNAV/VNAV DA to 1267 feet; increase all MDA 40 feet and LNAV Cat C/D visibility to RVR 4000; increase Circling Cat D visibility to 2½ SM. For inop ALS, when using Greenville downtown altimeter setting, increase LNAV/VNAV all Cats visibility to RVR 4500. VDP and Baro-VNAV NA when using Greenville downtown altimeter setting.

MALSR
AS

MISSED APPROACH:
Climb to 3000 direct OXABY and hold.

ATIS 134.25	GREER APP CON★ 118.8 270.275	GREER TOWER★ 120.1(CTAF) 0 251.15	GND CON 121.9	CLNC DEL 121.9	UNICOM 122.95
-----------------------	--	---	-------------------------	--------------------------	-------------------------



CATEGORY	A	B	C	D
LPV DA		1164/24	200 (200-½)	
LNAV/VNAV DA		1238/24	274 (300-½)	
LNAV MDA	1360/24	396 (400-½)	1360/35	396 (400-¾)
CIRCLING	1440-1	476 (500-1)	1480-1½ 516 (600-1½)	1700-2¼ 736 (800-2¼)

SE-2, 16 APR 2026 to 14 MAY 2026

SE-2, 16 APR 2026 to 14 MAY 2026