

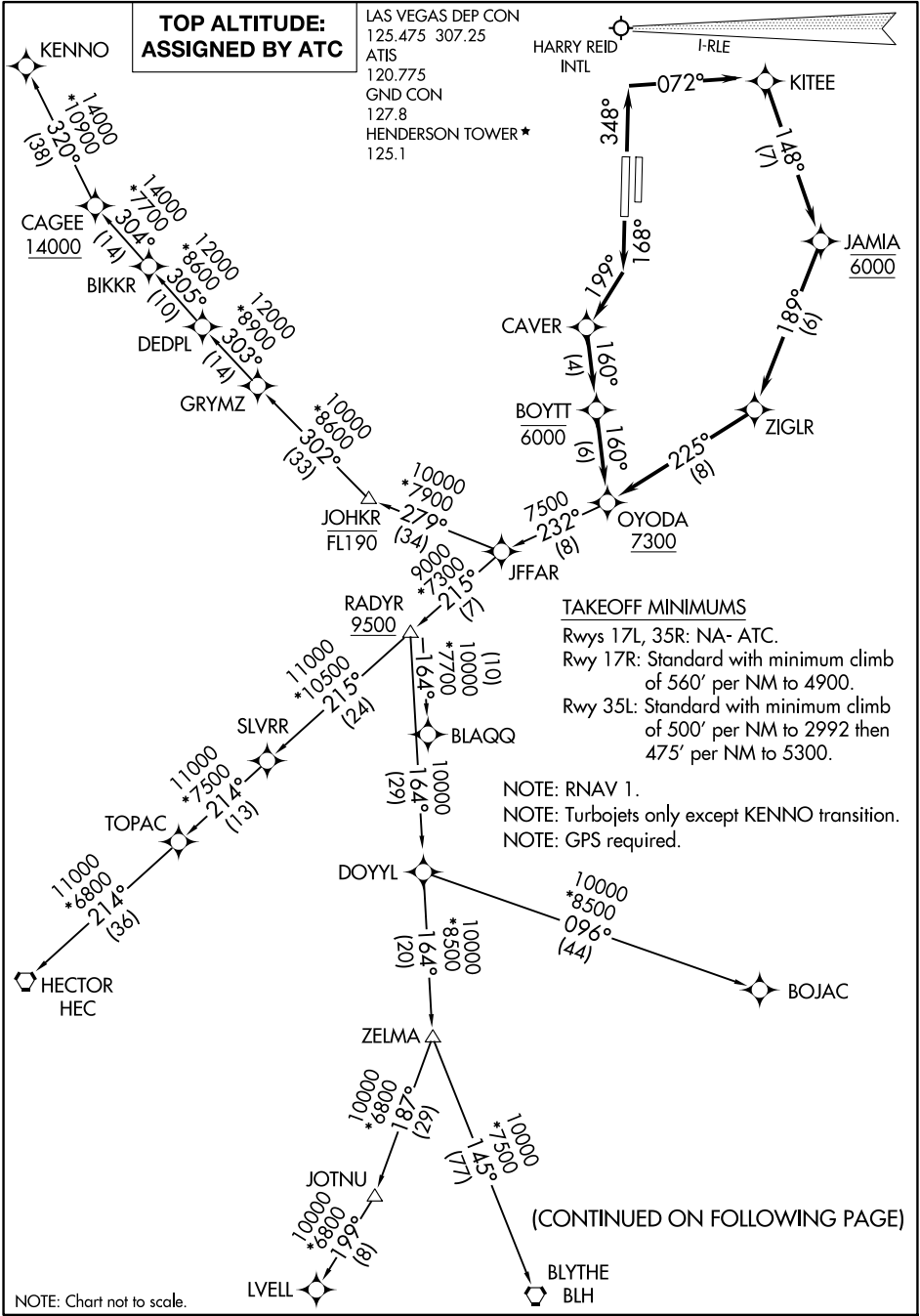
OYODA TWO DEPARTURE (RNAV)

AL-6514 (FAA)

HENDERSON EXEC (HND)
LAS VEGAS, NEVADA

**TOP ALTITUDE:
ASSIGNED BY ATC**

LAS VEGAS DEP CON
125.475 307.25
ATIS
120.775
GND CON
127.8
HENDERSON TOWER *
125.1



TAKEOFF MINIMUMS

Rwys 17L, 35R: NA- ATC.
Rwy 17R: Standard with minimum climb of 560' per NM to 4900.
Rwy 35L: Standard with minimum climb of 500' per NM to 2992 then 475' per NM to 5300.

NOTE: RNAV 1.
NOTE: Turbojets only except KENNO transition.
NOTE: GPS required.

(CONTINUED ON FOLLOWING PAGE)

NOTE: Chart not to scale.

OYODA TWO DEPARTURE (RNAV)

(OYODA2.OYODA) 22APR21

LAS VEGAS, NEVADA
HENDERSON EXEC (HND)

SW-4, 16 APR 2026 to 14 MAY 2026

SW-4, 16 APR 2026 to 14 MAY 2026



DEPARTURE ROUTE DESCRIPTION

TAKEOFF RUNWAY 17R: Climb on heading 168° to intercept course 199° to CAVER, then on track 160° to cross BOYTT at or below 6000, then on track 160° to cross OYODA at or above 7300, thence. . . .

TAKEOFF RUNWAY 35L: Climb on heading 348° to intercept course 072° to KITEE, then on track 148° to cross JAMIA at 6000, then on track 189° to ZIGLR, then on track 225° to cross OYODA at or above 7300, thence. . . .

. . . (transition). Maintain ATC assigned altitude, expect filed altitude 10 minutes after departure.

BLAQQ TRANSITION (OYODA2.BLAQQ)

BLYTHE TRANSITION (OYODA2.BLH)

BOJAC TRANSITION (OYODA2.BOJAC)

HECTOR TRANSITION (OYODA2.HEC)

KENNO TRANSITION (OYODA2.KENNO)

LVELL TRANSITION (OYODA2.LVELL)

SLVRR TRANSITION (OYODA2.SLVRR)

SW-4, 16 APR 2026 to 14 MAY 2026

SW-4, 16 APR 2026 to 14 MAY 2026