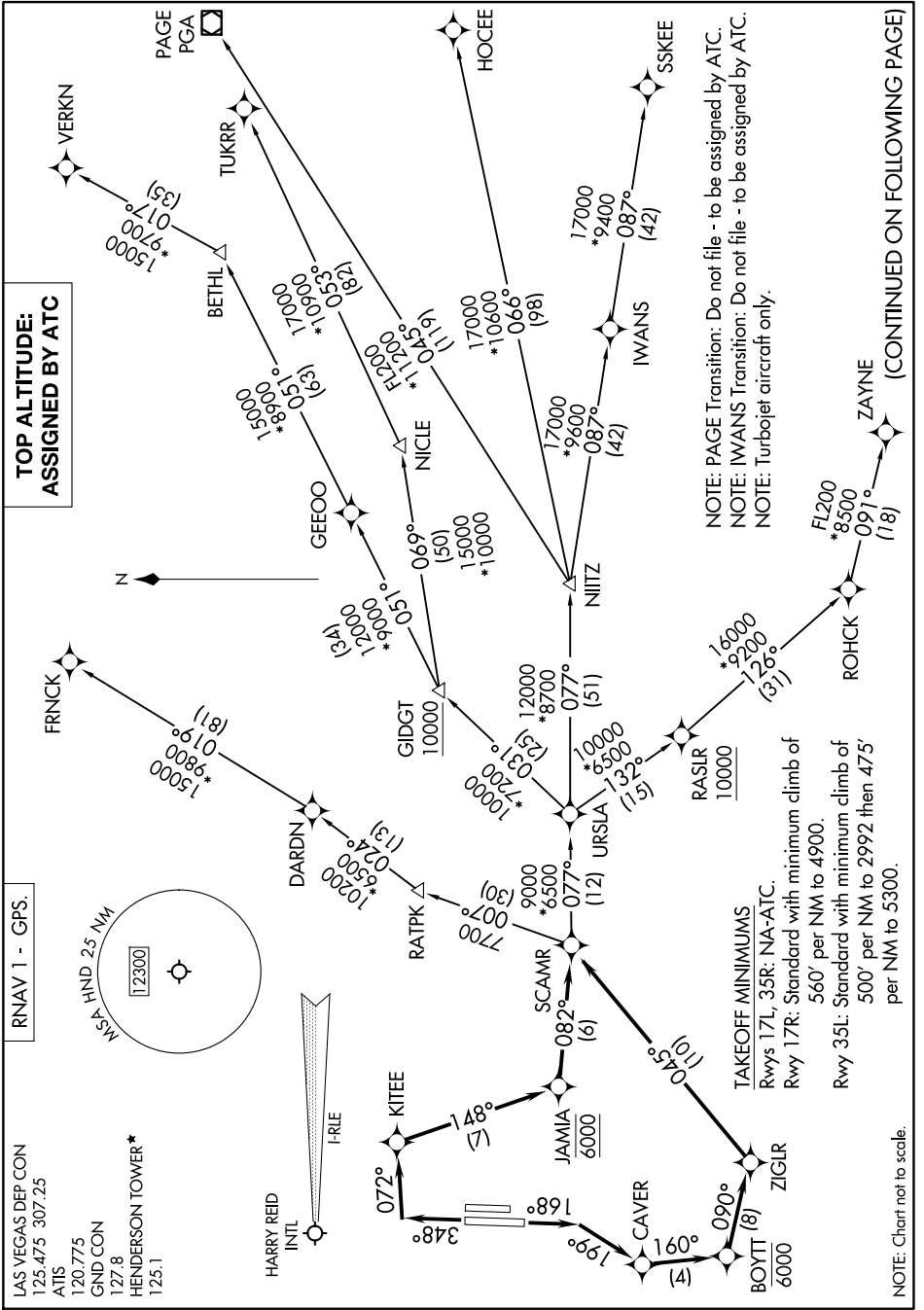


SW-4, 16 APR 2026 to 14 MAY 2026



SW-4, 16 APR 2026 to 14 MAY 2026



DEPARTURE ROUTE DESCRIPTION

TAKEOFF RUNWAY 17R: Climb on heading 168° to intercept course 199° to CAVER, then on track 160° to cross BOYTT at or below 6000, then on track 090° to ZIGLR, then on track 045° to SCAMR, thence. . . .

TAKEOFF RUNWAY 35L: Climb on heading 348° to intercept course 072° to KITEE, then on track 148° to cross JAMIA at 6000, then on track 082° to SCAMR, thence. . . .

. . . . (transition). Maintain ATC assigned altitude, expect filed altitude 10 minutes after departure.

FRNCK TRANSITION (SCAMR4.FRNCK)

HOCEE TRANSITION (SCAMR4.HOCEE)

IWANS TRANSITION (SCAMR4.IWANS)

PAGE TRANSITION (SCAMR4.PGA)

SSKEE TRANSITION (SCAMR4.SSKEE)

TUKRR TRANSITION (SCAMR4.TUKRR)

VERKN TRANSITION (SCAMR4.VERKN)

ZAYNE TRANSITION (SCAMR4.ZAYNE)

SW-4, 16 APR 2026 to 14 MAY 2026

SW-4, 16 APR 2026 to 14 MAY 2026