

WAAS CH <b>78418</b> <b>W12A</b>	APP CRS <b>121°</b>	Rwy Ldg <b>10849</b> TDZE <b>510</b> Apt Elev <b>510</b>
--	------------------------	--

# RNAV (GPS) RWY 12L

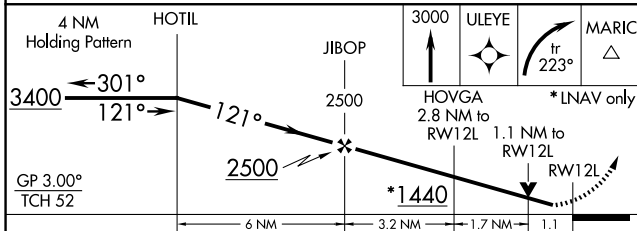
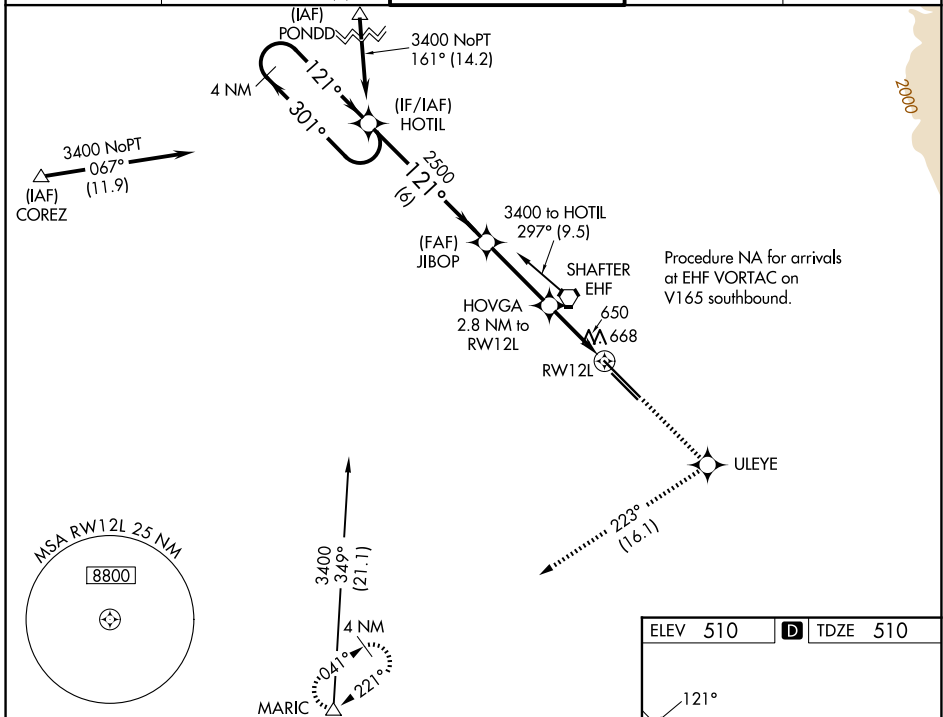
MEADOWS FLD (BFL)

RNP APCH.

**⚠** Baro-VNAV NA when using Porterville altimeter setting. For uncompensated Baro-VNAV systems, LNAV/VNAV NA below -16°C or above 54°C. Rwy 12L helicopter visibility reduction below ¾ SM NA. When local altimeter setting not received, use Porterville altimeter setting and increase all DA 92 feet, all MDA 100 feet, increase LPV all Cats, LNAV/VNAV all Cats and LNAV Cats C/D visibility ¼ mile.

**MISSED APPROACH:** Climb to 3000 direct ULEYE and right turn on track 223° to MARIC and hold.

ATIS <b>118.6</b>	BAKERSFIELD APP CON* <b>118.9 270.3 (N)</b> <b>118.8 284.625 (S)</b>	BAKERSFIELD TOWER* <b>118.1 (CTAF) 257.8</b>	GND CON <b>121.7</b>	UNICOM <b>122.95</b>
----------------------	--	---	-------------------------	-------------------------



ELEV 510	TDZE 510
----------	----------

Diagram details: 121°, 0.4% DOWN, 10849 x 1.50, TW R, 0.3% UP, 7700 x 100 = 0.3% UP, 30R, 30L.

TDZ/CL Rwy 30R  
HIRL Rwy 12L-30R  
MIRL Rwy 12R-30L  
REIL Rwy 12R and 30L

CATEGORY	A	B	C	D
LPV DA	760-1 250 (300-1)			
LNAV/VNAV DA	1073-2 563 (600-2)			
LNAV MDA	920-1 410 (500-1)		920-1¼ 410 (500-1¼)	

SW-3, 14 MAY 2026 to 11 JUN 2026

SW-3, 14 MAY 2026 to 11 JUN 2026