

WAAS CH 61040 W12B	APP CRS 121°	Rwy Ldg TDZE Apt Elev	7700 488 510
--	------------------------	-----------------------------	---

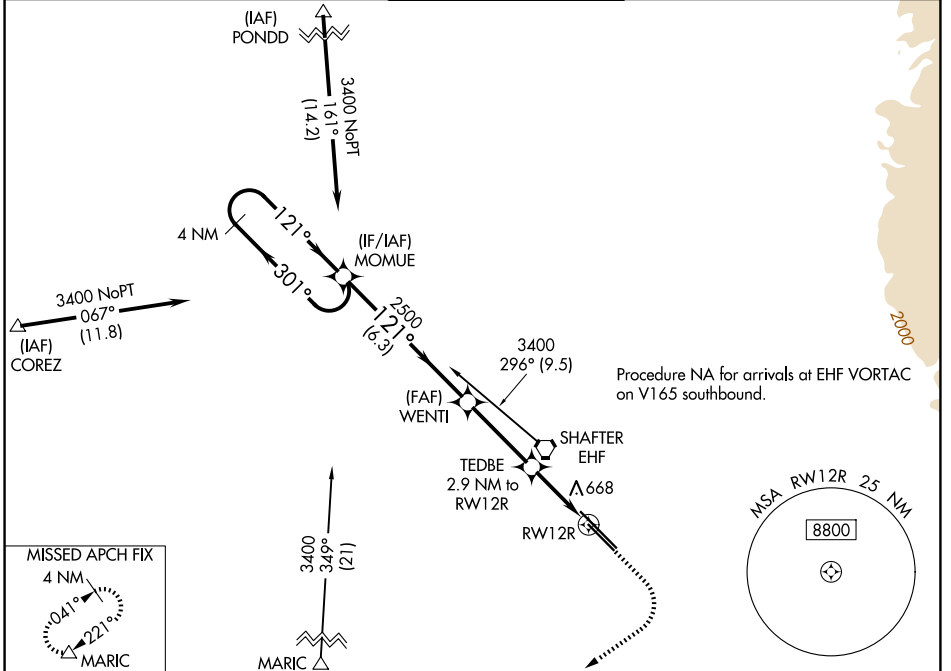
RNAV (GPS) RWY 12R

MEADOWS FLD (BFL)

▽ For uncompensated Baro-VNAV systems, LNAV/VNAV NA below -1°C (31°F) or above 54°C (130°F). Circling NA northeast of Rwy 12L-30R. DME/DME RNP-0.3 NA.

MISSED APPROACH: Climb to 1000 then climbing right turn to 3500 direct MARIC and hold.

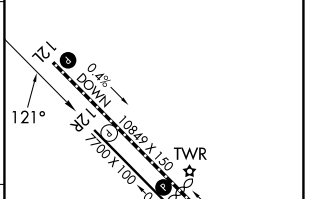
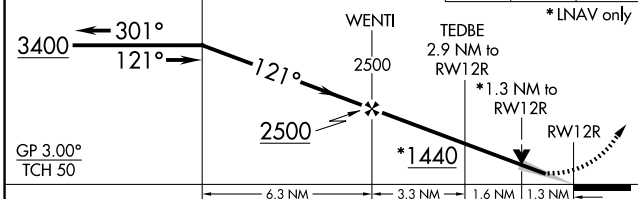
ATIS 118.6	BAKERSFIELD APP CON* 118.9 270.3 (N) 118.8 284.625 (S)	BAKERSFIELD TOWER* 118.1 (CTAF) 257.8	GND CON 121.7	UNICOM 122.95
----------------------	--	---	-------------------------	-------------------------



SW-3, 14 MAY 2026 to 11 JUN 2026

SW-3, 14 MAY 2026 to 11 JUN 2026

VGSI and RNAV glidepath not coincident (VGSI Angle 3.00/TCH 25).		1000	3500	MARIC	ELEV 510	D	TDZE 488
4 NM Holding Pattern MOMUE		↑	↷	△			



CATEGORY	A	B	C	D
LPV DA		738-3/4	250 (300-3/4)	
LNAV/VNAV DA		969-1 5/8	481 (500-1 5/8)	
LNAV MDA	920-1	432 (500-1)	920-1 1/4	432 (500-1 1/4)
CIRCLING	960-1	450 (500-1)	960-1 1/2	1060-2 450 (500-1 1/2) 550 (600-2)

TDZ/CL Rwy 30R
HIRL Rwy 12L-30R **L**
MIRL Rwy 12R-30L **L**
REIL Rwy 12R and 30L