

26078

AIRPORT DIAGRAM

AL-78 (FAA)

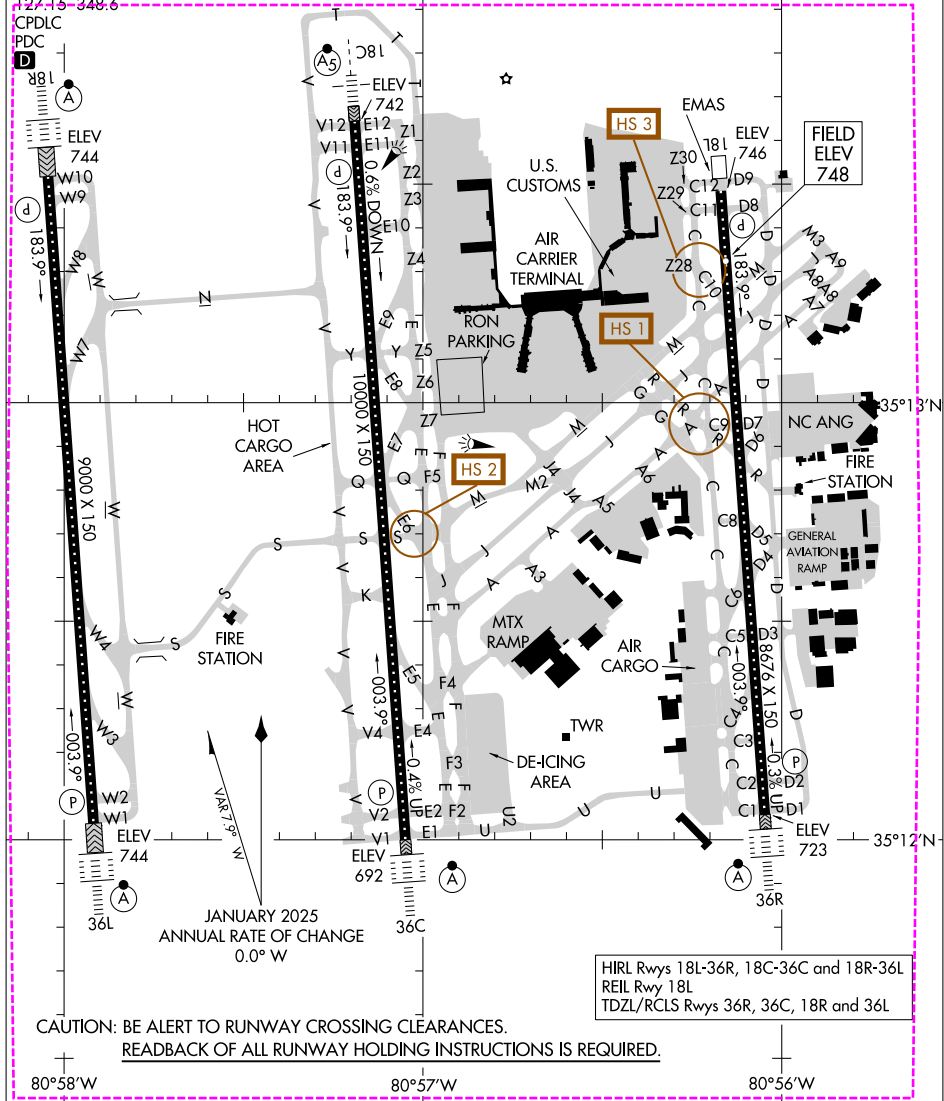
CHARLOTTE/DOUGLAS INTL (CLT)
CHARLOTTE, NORTH CAROLINA

D-ATIS ARR 121.15
 DEP 132.1
 CHARLOTTE TOWER
 118.1 (RWY 18L-36R)
 126.4 (RWY 18C-36C)
 133.35 (RWY 18R-36L)
 257.8
 GND CON
 121.8 (WEST)
 121.9 (EAST)
 348.6
 CLNC DEL
 127.15-348.6

RWY 18C-36C
 PCR 1009 R/C/W/T
 S-93, D-200, 2D-350, 2D/2D2-650
 RWY 18L-36R
 PCR 1076 R/D/W/T
 S-93, D-200, 2D-350, 2D/2D2-650
 RWY 18R-36L
 PCR 627 R/C/W/T
 S-93, D-200, 2D-350, 2D/2D2-650

ASDE-X in use. Operate transponders with altitude reporting mode and ADS-B (if equipped) enabled on all airport surfaces.

Runway Status Lights in operation.



SE-2, 16 APR 2026 to 14 MAY 2026

SE-2, 16 APR 2026 to 14 MAY 2026

CAUTION: BE ALERT TO RUNWAY CROSSING CLEARANCES.
 READBACK OF ALL RUNWAY HOLDING INSTRUCTIONS IS REQUIRED.

HIRL Rwy 18L-36R, 18C-36C and 18R-36L
 REIL Rwy 18L
 TDZL/RCLS Rwy 36R, 36C, 18R and 36L

AIRPORT DIAGRAM

26078

CHARLOTTE, NORTH CAROLINA
CHARLOTTE/DOUGLAS INTL (CLT)

26134

AIRPORT DIAGRAM

AL-78 (FAA)

CHARLOTTE/DOUGLAS INTL (CLT)
CHARLOTTE, NORTH CAROLINA

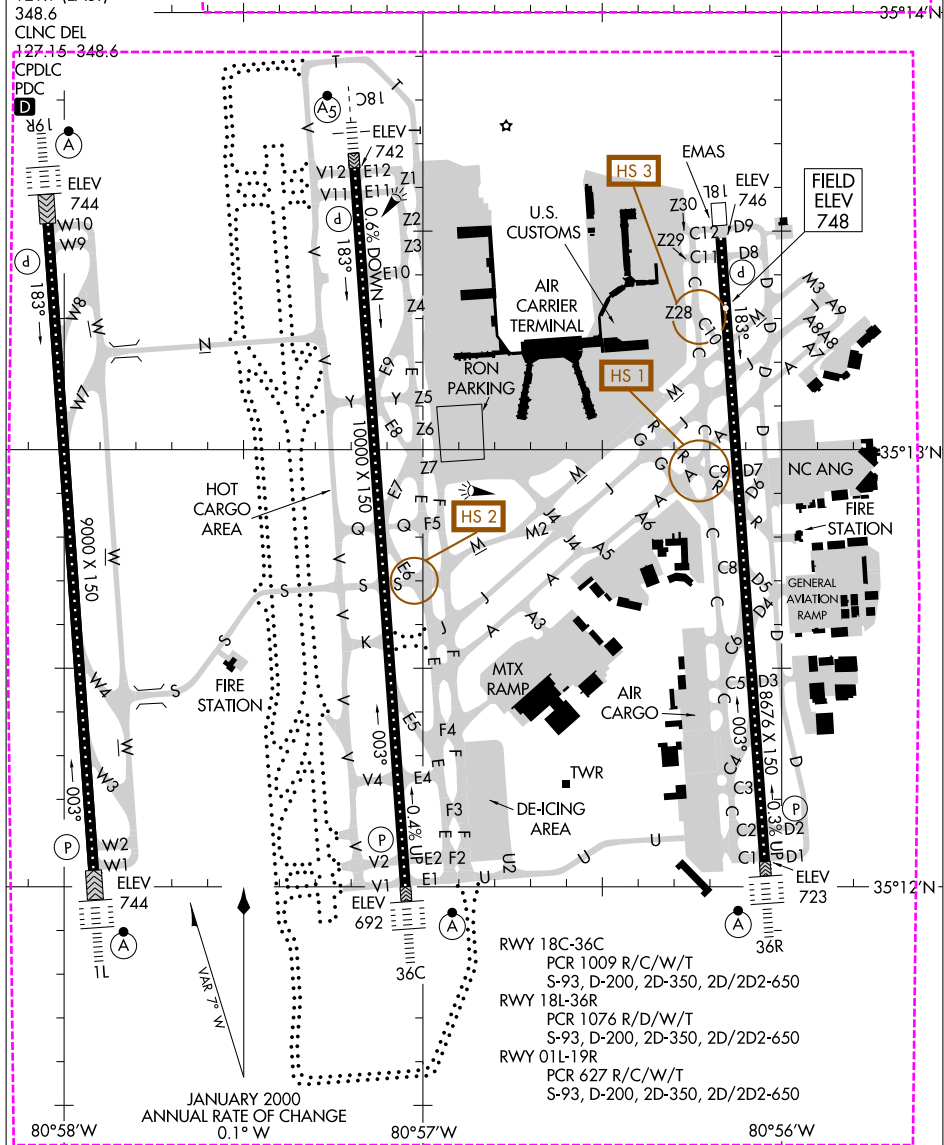
D-ATIS ARR 121.1
 DEP 132.1
 CHARLOTTE TOWER
 118.1 (RWY 18L-36R)
 126.4 (RWY 18C-36C)
 133.35 (RWY 01L-19R)
 257.8
 GND CON
 121.8 (WEST)
 121.9 (EAST)
 348.6
 CLNC DEL
 127.15-348.6
 CPDLC
 PDC

HIRL Rwy 18L-36R, 18C-36C and 01L-19R
 REIL Rwy 18L
 TDZL/RCLS Rwy 36R, 36C, 19R and 01L

ASDE-X in use. Operate transponders
 with altitude reporting mode and ADS-B
 (if equipped) enabled on all airport surfaces.

Runway Status Lights in operation.

CAUTION: BE ALERT TO RUNWAY CROSSING CLEARANCES.
 READBACK OF ALL RUNWAY HOLDING INSTRUCTIONS IS REQUIRED.



SE-2, 14 MAY 2026 to 11 JUN 2026

SE-2, 14 MAY 2026 to 11 JUN 2026

AIRPORT DIAGRAM

26134

CHARLOTTE, NORTH CAROLINA
CHARLOTTE/DOUGLAS INTL (CLT)