

(BANKR.BANKR5) 24137

BANKR FIVE ARRIVAL (RNAV)

AL-78 (FAA)

CHARLOTTE/DOUGLAS INTL (CLT)
CHARLOTTE, NORTH CAROLINA

CHARLOTTE APP CON
135.6 377.15
D-ATIS ARR
121.15

RNAV 1 - DME/DME/IRU or GPS.

RADAR required.

- NOTE: Jet aircraft only.
- NOTE: Landing south use Rwy 18R transition, landing north use Rwy 36L transition.
- NOTE: Expect runway assignment from CLT approach.
- NOTE: Jet aircraft descend via Mach number until 280K, if unable, advise ATC.

JRDEN
Ldg Rwys
18L/C/R



STKUP
FOBAR
14000
12000
DEELX
12000 250K

ROBRR
16000
12000

CHESTER CATAWBA
RGNL

BLNCE
9000 210K
Ldg Rwys
36L/C/R

OPALS
CONTR
12000
DEBBT
FL210 250K
12000

BANKR
FL220 270K
13000

JONZE
10 NM
245°
065°

KUPPP
HRTWL
10 NM
244°
066°
067°
247°

CRDET
11000
2000
038°
17000
10 NM

CHKNG
11000
2000
029°
17000
10 NM

NTRST
FL240 270K

PONZE
FL270 280K
11000
2000
027°
17000
10 NM

USE CAUTION: Parachute jumping, 16 NM northeast DEBBT, 3 NM radius KDCM at or below 14500 MSL.

(CONTINUED ON FOLLOWING PAGE)

NOTE: Chart not to scale.

BANKR FIVE ARRIVAL (RNAV)

(BANKR.BANKR5) 16MAY24

CHARLOTTE, NORTH CAROLINA
CHARLOTTE/DOUGLAS INTL (CLT)

SE-2, 16 APR 2026 to 14 MAY 2026

SE-2, 16 APR 2026 to 14 MAY 2026

(BANKR.BANKR5) 24137

BANKR FIVE ARRIVAL (RNAV)

AL-78 (FAA)

CHARLOTTE/DOUGLAS INTL (CLT)
CHARLOTTE, NORTH CAROLINA

ARRIVAL ROUTE DESCRIPTION

PONZE TRANSITION (PONZE.BANKR5)

From BANKR on track 040° to cross DEBBT between 12000 and FL210 and at 250K.

LANDING RUNWAYS 18L/C/R: From DEBBT on track 040° to cross ROBRR between 12000 and 16000, then on track 050° to cross FOBAR between 12000 and 14000, then on track 050° to cross DEELX at 12000 and at 250K, then on track 050° to STKUP, then on track 003° to DOSBE, then on track 003° to AAIRE, then on track 003° to JRDEN, then on track 003°. Expect RADAR vectors to final approach course.

LANDING RUNWAYS 36L/C/R: From DEBBT on track 070° to cross CONTR between 11000 and 12000, then on track 070° to OPALS, then on track 070° to cross BLNCE at 9000 and at 210K, then on track 090°. Expect RADAR vectors to final approach course.

SE-2, 16 APR 2026 to 14 MAY 2026

SE-2, 16 APR 2026 to 14 MAY 2026

BANKR FIVE ARRIVAL (RNAV)

(BANKR.BANKR5) 16MAY24

CHARLOTTE, NORTH CAROLINA
CHARLOTTE/DOUGLAS INTL (CLT)

(BANKR.BANKR6) 26134

AL-78 (FAA)

CHARLOTTE/DOUGLAS INTL (CLT)

BANKR SIX ARRIVAL (RNAV)

CHARLOTTE, NORTH CAROLINA

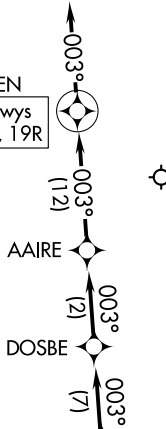
CHARLOTTE APP CON
135.6 377.15
D-ATIS ARR
121.15

RNAV 1 - DME/DME/IRU or GPS.

RADAR required.

- NOTE: Jet aircraft only.
- NOTE: Landing south use Rwy 19R transition, landing north use Rwy 1L transition.
- Expect runway assignment from CLT approach.
- NOTE: Jet aircraft descend via Mach number until 280K, if unable, advise ATC.

JRDEN
Ldg Rwys
18L/C, 19R



FOBAR
14000
12000

DEELX
12000 250K

ROBRR
16000
12000

CHESTER
CATAWBA
RGNL

BLNCE
9000 210K
Ldg Rwys
1L, 36C/R

10 NM 245° JONZE

BANKR
FL220 270K
13000

DEBBT
FL210 250K
12000

CONTR
12000
11000

10 NM 244° KUPPP

HRTWL
11000
10000

CRDET
17000

CHKNG
11000
10000

NTRST
FL240 270K

PONZE
FL270 280K

USE CAUTION: Parachute jumping, 16 NM northeast DEBBT, 3 NM radius DCM at or below 14500 MSL.

(CONTINUED ON FOLLOWING PAGE)

NOTE: Chart not to scale.

BANKR SIX ARRIVAL (RNAV)

(BANKR.BANKR6) 14MAY26

CHARLOTTE, NORTH CAROLINA
CHARLOTTE/DOUGLAS INTL (CLT)

SE-2, 14 MAY 2026 to 11 JUN 2026

SE-2, 14 MAY 2026 to 11 JUN 2026

(BANKR.BANKR6) 26134

AL-78 (FAA)

CHARLOTTE/DOUGLAS INTL (CLT)
CHARLOTTE, NORTH CAROLINA

BANKR SIX ARRIVAL (RNAV)

ARRIVAL ROUTE DESCRIPTION

PONZE TRANSITION (PONZE.BANKR6)

From BANKR on track 040° to cross DEBBT between 12000 and FL210 and at 250K.

LANDING RUNWAYS 1L, 36C/R: From DEBBT on track 070° to cross CONTR between 11000 and 12000, then on track 070° to OPALS, then on track 070° to cross BLNCE at 9000 and at 210K, then on track 090°. Expect RADAR vectors to final approach course.

LANDING RUNWAYS 18L/C, 19R: From DEBBT on track 040° to cross ROBRR between 12000 and 16000, then on track 050° to cross FOBAR between 12000 and 14000, then on track 050° to cross DEELX at 12000 and at 250K, then on track 050° to STKUP, then on track 003° to DOSBE, then on track 003° to AAIRE, then on track 003° to JRDEN, then on track 003°. Expect RADAR vectors to final approach course.

SE-2, 14 MAY 2026 to 11 JUN 2026

SE-2, 14 MAY 2026 to 11 JUN 2026

BANKR SIX ARRIVAL (RNAV)

(BANKR.BANKR6) 14MAY26

CHARLOTTE, NORTH CAROLINA
CHARLOTTE/DOUGLAS INTL (CLT)