

(BOBZY5.BOBZY) 25051

BOBZY FIVE DEPARTURE (RNAV)

AL-78 (FAA)

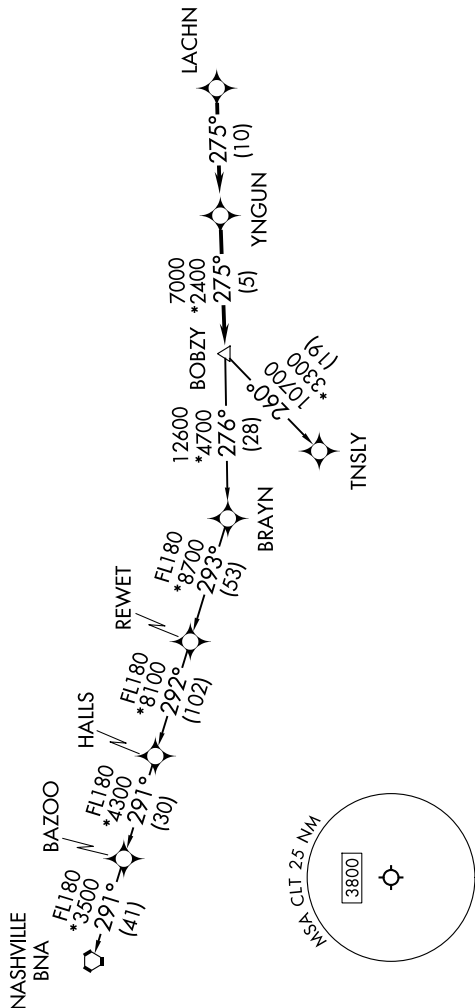
CHARLOTTE/DOUGLAS INTL (CLT)
CHARLOTTE, NORTH CAROLINA

CHARLOTTE DEP CON
120.5 257.2
D-ATIS DEP 132.1
CLNC DEL
127.15 348.6
CPDIC
GND CON
121.8 348.6 (WEST)
121.9 348.6 (EAST)
CHARLOTTE TOWER
118.1 257.8 (Rwys 18L-36R)
126.4 257.8 (Rwy 18C-36C)
133.35 257.8 (Rwy 18R-36L)

RNAV 1-DME/DME/IRU or GPS.
RADAR required.

- NOTE: For turbo jets only.
NOTE: If unable to accept climb rates, advise ATC on initial contact.
NOTE: Transponder code will be issued via PDC or Charlotte CLNC DEL.
NOTE: Accelerate to 250K, if unable advise ATC. Upon reaching 10000 MSL, accelerate to and maintain 280K, if unable advise ATC.

TAKEOFF MINIMUMS
Rwys 18L/C/R, 36C/R: Standard with minimum climb of 500' per NM to 1260.
Rwy 36L: Standard with minimum climb of 500' per NM to 1400.



NOTE: Chart not to scale.

(CONTINUED ON FOLLOWING PAGE)

SE-2, 16 APR 2026 to 14 MAY 2026

BOBZY FIVE DEPARTURE (RNAV)

(BOBZY5.BOBZY) 21MAR24

CHARLOTTE, NORTH CAROLINA
CHARLOTTE/DOUGLAS INTL (CLT)

(BOBZY5.BOBZY) 24081

BOBZY FIVE DEPARTURE (RNAV)

AL-78 (FAA)

CHARLOTTE/DOUGLAS INTL (CLT)
CHARLOTTE, NORTH CAROLINA**DEPARTURE ROUTE DESCRIPTION**
SEE ADDITIONAL REQUIREMENTS ON AAUP

TAKEOFF RUNWAYS 18L/C: Climb on heading 183° to 1260, then on heading 183° or as assigned by ATC on RADAR vectors to LACHN, thence. . . .

TAKEOFF RUNWAY 18R: Climb on heading 183° to 1260, then on heading 200° or as assigned by ATC on RADAR vectors to LACHN, thence. . . .

TAKEOFF RUNWAY 36L: Climb on heading 003° to 1260, then on heading 315° or as assigned by ATC on RADAR vectors to LACHN, thence. . . .

TAKEOFF RUNWAY 36C: Climb on heading 003° to 1260, then on heading 330° or as assigned by ATC on RADAR vectors to LACHN, thence. . . .

TAKEOFF RUNWAY 36R: Climb on heading 003° to 1260, then on heading 025° or as assigned by ATC on RADAR vectors to LACHN, thence. . . .

. . . .on depicted route to BOBZY, then on assigned transition. Maintain 8000.

Expect clearance to filed altitude within 10 minutes after departure.

NASHVILLE TRANSITION (BOBZY5.BNA)

TNSLY TRANSITION (BOBZY5.TNSLY)

SE-2, 16 APR 2026 to 14 MAY 2026

SE-2, 16 APR 2026 to 14 MAY 2026

BOBZY FIVE DEPARTURE (RNAV)

(BOBZY5.BOBZY) 21MAR24

CHARLOTTE, NORTH CAROLINA
CHARLOTTE/DOUGLAS INTL (CLT)

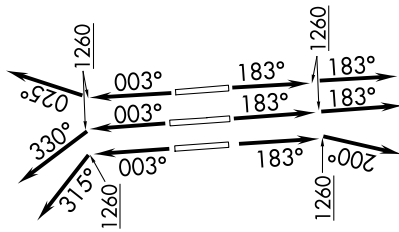
(BOBZY6.BOBZY) 26134

AL-78 (FAA)

BOBZY SIX DEPARTURE (RNAV)

CHARLOTTE/DOUGLAS INTL (CLT)
CHARLOTTE, NORTH CAROLINA

TOP ALTITUDE:
8000



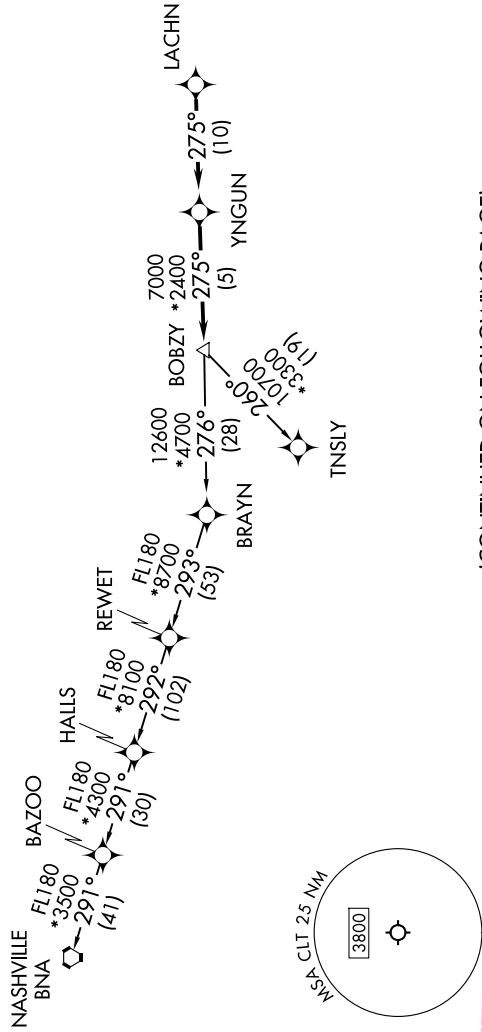
SE-2, 14 MAY 2026 to 11 JUN 2026

RNAV 1 - DME/DME/IRU or GPS.
RADAR required.

- CHARLOTTE DEP CON 120.5 257.2
- D-ATIS DEP 132.1
- CINC DEL 127.15 348.6
- CPDLC
- GND CON 121.8 348.6 (W)
- 121.9 348.6 (E)
- CHARLOTTE TOWER 118.1 257.8 (181-36R)
- 126.4 257.8 (18C-36C)
- 133.35 257.8 (11-19R)

- NOTE: Turbojet only.
- NOTE: If unable to accept climb rates, advise ATC on initial contact.
- NOTE: Transponder code will be issued via PDC or Charlotte CINC DEL.
- NOTE: Accelerate to 250K, if unable advise ATC. Upon reaching 10000 MSL, accelerate to and maintain 280K, if unable advise ATC.

TAKEOFF MINIMUMS
 Rwy's 18L/C, 19R, 36C/R: Standard with minimum climb of 500'/NM to 1260.
 Rwy 1L: Standard with minimum climb of 500'/NM to 1400.



NOTE: Chart not to scale.

(CONTINUED ON FOLLOWING PAGE)

SE-2, 14 MAY 2026 to 11 JUN 2026

BOBZY SIX DEPARTURE (RNAV)

(BOBZY6.BOBZY) 14MAY26

CHARLOTTE, NORTH CAROLINA
CHARLOTTE/DOUGLAS INTL (CLT)

(BOBZY6.BOBZY) 26134

AL-78 (FAA)

CHARLOTTE/DOUGLAS INTL (CLT)
CHARLOTTE, NORTH CAROLINA

BOBZY SIX DEPARTURE (RNAV)



DEPARTURE ROUTE DESCRIPTION SEE ADDITIONAL REQUIREMENTS ON AAUP

TAKEOFF RUNWAY 1L: Climb on heading 003° to 1260, then on heading 315° or as assigned by ATC for RADAR vectors to LACHN, thence. . .

TAKEOFF RUNWAYS 18L/C: Climb on heading 183° to 1260, then on heading 183° or as assigned by ATC for RADAR vectors to LACHN, thence. . .

TAKEOFF RUNWAY 19R: Climb on heading 183° to 1260, then on heading 200° or as assigned by ATC for RADAR vectors to LACHN, thence. . .

TAKEOFF RUNWAY 36C: Climb on heading 003° to 1260, then on heading 330° or as assigned by ATC for RADAR vectors to LACHN, thence. . .

TAKEOFF RUNWAY 36R: Climb on heading 003° to 1260, then on heading 025° or as assigned by ATC for RADAR vectors to LACHN, thence. . .

. . . on depicted route to BOBZY, then on assigned transition. Maintain 8000. Expect filed altitude 10 minutes after departure.

NASHVILLE TRANSITION (BOBZY6.BNA)

TNSLY TRANSITION (BOBZY6.TNSLY)

SE-2, 14 MAY 2026 to 11 JUN 2026

SE-2, 14 MAY 2026 to 11 JUN 2026

BOBZY SIX DEPARTURE (RNAV)

(BOBZY6.BOBZY) 14MAY26

CHARLOTTE, NORTH CAROLINA
CHARLOTTE/DOUGLAS INTL (CLT)